

Valley View Charolais Ranch

55th Annual Bull Sale

Saturday March 25, 2023



Call or Text Buddy--

Buddy Westphal: (406) 270-0222

Scott Westphal: (406) 261-0775

Auctioneer Rick Machado: (805) 501-3210

Sale Starts at 1:00 p.m.
Complimentary Lunch at 11:30 a.m.

**Valley View
Charolais Ranch**

44601 Valley View Road
Polson, Montana 59860

Please Register at least 24 Hours prior to Sale

Register online or Call DV Auction at 402-316-5460



Watch & Bid online for FREE!

Can't make the sale?

Let DVAuction bring the sale to you!

Busy during the sale?

Let DVAuction represent your bid!

Visit www.dvauction.com and Register!

It's as easy as 1, 2, 3...

1. Create an account at www.dvauction.com under the "create new account" tab
2. Apply for bidding by clicking "apply for bidding" in the upper left corner of your screen, at least 24 hours prior to the auction
3. Tune into the sale and make your purchases!

**For General Questions Please Contact Our Office:
(402) 316-5460 or support@dvauction.com**

***High Speed Internet Access Required**

A Guide to Reading Our Catalog

The bulls will sell in catalog order by lot number. Each bull is tagged with the lot number in one ear and his personal herd number (tag) in the other ear. Each bull was tagged, tattooed and weighed as a calf within hours of birth. The tattoo in the left ear corresponds with his ear tag number. Bulls are weighed and evaluated throughout the next 2 years.

Birth weight remains the most accurate indicator to predict ease of calving. Birth weight is highly heritable, but many other factors are relevant including genetics, age of dam, and nutrition. For 50 years we have selected bulls with shorter gestation (highly heritable), thereby allowing the calf to be born on time in 283 days or less, so it is not growing too large inside his mother and cause calving problems. A calf will gain one pound or more per day the last 30 days of gestation, so calving on time and not going overdue is important. Conformation of the calf does have significance in ease of calving. But the myth that a big birth weight is acceptable if the calf is "long and lean" is proven wrong by the dystocia calves with a leg back or head back that cause calving problems due to being too "long" or too big to advance through the birth canal easily and correctly. Size (BW) matters!!

Age of dam affects birth weight as do genetics and nutrition. A heifer bred to the same bull for her first, second and third calves may increase the birth weight as much as five pounds per year of age. We have found that a cow of 10 years and older may taper off in birth weight of her calf, too. A female born with a high birth weight herself will usually produce calves with high birth weights regardless of the sire mating. In this catalog, we provide the age of dam under her name in the pedigree so you can better evaluate a bull's birth weight. If (Hfr) is noted under the dam's name, she is a 2-year-old first-calf heifer and is bred to an easier-calving sire. If (3) is under the dam, she too is bred to an easier-calving bull and her age also affects the birth weight. If you are selecting bulls to use on heifers we suggest you select only from the *Heifer Bull* lots. For extra easy calving of small cows, select from the (Hfr) and (3) dams with low birth weights. **Heifer bulls are Lots 179—188.**



AERIAL VIEW OF VVCR-FLATHEAD RIVER & HORSESHOE BEND

Nutrition can affect birth weight by 5 to 10 pounds. An easy winter can be followed by larger calves if the cows had it too easy and got too fat. A tough winter in which extra supplement has been pushed to the mothers or if they stood around in confinement with no exercise, that can also increase birth weights. Therefore, birth weights should not necessarily be compared from year-to-year within a herd, nor be compared to another herd with different cow size and age, or climate and management. We have determined that 100 lbs. is too big of a calf for us to feel comfortable selling to our customers who expect problem-free calving. Therefore, we cull all bulls born 100 lbs. and above, realizing a large dead calf at birth has a "distressingly poor growth rate" and weaning weight.

Weaning weights are adjusted to 205 days of age so that an early-born calf does not have extra days of growth advantage over a later calf. The majority of these bulls are born within a short four-week period, so adjustments are minimal. Weaning weights are taken close to the 205-day weaning time so the weaning weight listed is as near actual as possible. For a cow-calf operation, the maximum weaning weight put across the scales from the number of cows exposed at breeding time is the formula for your success. Selecting the quality and quantity of bulls to get most of your cows bred the first cycle is essential. Each calf born 21 days late, at near three lbs. per day gain, means over \$100 lost. This loss does not include open cows missed by the bulls. Select bulls that will produce the biggest and healthiest calf without calving problems. Research proves that cows given even minor calving assistance at birth do not breed back as quickly. Big calves at birth may give you big calves at weaning, but be sure you consider the pounds that do not go across the scales if the calf is dead at birth. So do not totally disregard ease of calving while trying to increase your weaning weights.

The 18-mo. index listed in our catalog indicates the size of these bulls at 18 months and is a good indication of genetic capacity for mature size. We know that weaning weight indicates how big the calf was at birth plus the amount of milk his mother fed him. A year later, at 18 months of age, the bull has been on his own for about a year. He was fed a growing ration of primarily alfalfa hay after weaning and had to compete with over 250 other bulls in our weaning lot. Then, in spring, we turn out the entire group of yearling bulls on grass where they have to climb hills, walk through rocks and drink out of streams or the Flathead River. When they come in that fall, they know that life is NOT just a pile of bedding and a bunk full of grain. We then index the size they have reached and evaluate structural soundness, along with their ability to be an easy keeper and put on growth and muscle out on their own on pasture. This sane way of maturing our two-year-old bulls allows you to select a mature bull that can and will travel well in your pasture, and breed more cows in a shorter breeding period. Plus, they will stay sound for more years than feedlot-fattened yearling bulls. Our catalog order is based on the 18-mo. Index of the bulls.



Valley View Charolais Ranch

The Westphals

55th Annual Bull Sale

Saturday, March 25, 2023

Sale Starts at 1:00 p.m.



Friday and Saturday – View Bulls

Saturday – Sale starts at 1:00

- *11:30 am Complimentary Lunch
- * 1:00 pm Bull Sale starts promptly
- * Social Immediately Following the Sale

Auctioneer: Rick Machado
Cell: 805-501-3210

Sales Day Representatives:

- John Goggins *Western Ag Reporter*
406-698-4159
- Devon Murnin *Western Livestock Journal*
+ Livestock Insurance
406-696-1502
- Jeff Thomas *Prairie Star*
406-581-8859
- Clint Sexson *AICA*
541-609-0167
- DVAuction 402-316-5460



DRIVING DIRECTIONS TO THE RANCH

From Missoula: Go 50 miles North on Hwy 93 to Ronan. At 2nd stop light in Ronan, turn left on Round Butte Road (State Highway 211) and go 8.5 miles. Turn right on Valley View Rd. (paved) and go 4.3 miles north to Valley View Charolais Ranch sign and driveway on the left.



From Polson: Go 7 blocks South on Main St. to 7th Ave. Turn right (Southwest) on 7th Ave. which is Kerr Dam Road (State Highway 358). Go 5½ miles (1/2 mile past mile-marker 5). Turn right on Eli Gap Rd. and go 4 miles west to a 4-way stop at the Valley View School. Turn left on Valley View Road and go 2 miles south to the Valley View

Charolais Ranch sign and driveway on the right.

Signs will mark both routes

★ **Bull Sale is also on www.dvauctions.com** ★

Please register at least 24 Hours prior to Sale if buying on line



VALLEY VIEW CHAROLAIS RANCH BREEDING PROGRAM

It is with pleasure we present our two-year-old bulls in this *55th Annual Bull Sale*. We believe we are offering the kind of bulls that will optimize your cows' production. We hope you will continue to return for more of our bulls every year. Our business is based on long-term, satisfied return customers, and we **guarantee satisfaction** with every bull you purchase...the best guarantee in the business.

Our cowherd started 60 years ago, in 1962, with bloodlines from the Michaelis Ranch, the first breeders of Charolais in the U.S. (1934). The most-proven bloodlines in the Breed are represented in our pedigrees for many generations. Our sires are selected from bulls proven superior on the Canadian Conception-to-Consumer Test and AICA Sire Evaluation Test for traits from ease of calving to superior growth plus carcass quality. We have maintained extensive performance records including birth weight for every calf born since 1962. Our cows are culled for disposition, ease of calving, fertility, milk and mothering ability, as well as production index of her calves and her longevity. We firmly believe in using the scales to verify our quality, production, and genetic progress.



After good dispositions, our number-one consideration in producing bulls is **ease of calving**. A bull that calves without problems out on the range fits this definition. We realize that a calf must be born alive to attain fantastic weaning and yearling weights. Only **if** they are born alive are we able to performance test and identify the superior-performing individuals. Our bulls are documented to out-perform other breeds in feedlot gain, feed efficiency, and carcass quality. Commercial cattlemen also gain a bonus explosion of hybrid vigor and added (extra) pounds through cross-breeding. ***Our cattle are fully guaranteed.***

Due to their maturity and semen capacity, you can expect our **two-year-old bulls** to breed more cows earlier in the breeding season and add 50-plus pounds of weaning weight to your calves. In the feedlot these calves will produce faster and more efficient gains, plus a bigger and higher-yielding carcass. The documented superior feed efficiency of our genetics is a major consideration for buyers. Success in the cattle business is all about live calves at birth with no calving problems; high weaning weights at selling time; good, efficient, and fast gains in the feedlot; and a high-yielding carcass for the packer to produce wholesome tender lean cuts of meat for the consumer. Charolais does this best and our bloodlines lead the Charolais Breed for these traits!

Years of research and testing confirm that high-yielding, lean carcasses cannot be produced any better than by Charolais-sired calves. Demand for these calves remains high, at any size, age or market across the nation. Charolais was the first breed imported from Europe, specifically for their ability to produce a bigger, leaner and better carcass from the Hereford and Angus cattle in the U.S. **Valley View Charolais Ranch two-year-old Bulls** calve easy and they are the modern meat-type bulls demanded by today's industry.

Carcass quality is not a new trait for our bulls. **Valley View Charolais Ranch Bulls** have sired **Montana Steer of Merit Carcass Champions** for over 30 years. Thirty-five years ago the Montana Steer of Merit Carcass Champion was sired by a **VVCR** bull. This steer topped 836 entries from every carcass contest held across the state. He graded choice, with .15 inches of backfat, a 17-inch rib eye and over 65% cutability. Our purebred heifer carcass data continues to verify our fifty-five-year history of superior carcass-quality pedigrees.

Through our genetic selection we have proven: (1) there is no reason to have calving problems; (2) our bulls remain sound for more years of service; (3) Charolais-cross cows make excellent mothers; and (4) you can eliminate dehorning by using our Polled Charolais bulls. Our VVCR Bloodlines are the foundation bloodlines for several top Charolais herds across the nation, from New York to California and Canada to Texas. We have also exported females to other countries with great reception. While our primary business is producing bulls for cross-breeding in commercial herds, we also sell bulls that lead some top Charolais Herds nation-wide. Our bulls have been used at the U.S. Range Livestock Research Centers at Miles City and Havre in various research projects, including their closed Continental Breed developed there. We are convinced that you will benefit from our balanced breeding program and meet all of your breeding goals.

It is very gratifying to observe the progress our herd has achieved through sound selection and culling. Our breeding program remains very practical and middle-of-the-road and is based on superior genetics instead of big feed rations. The bulls offered today are **“Only the Best”** bulls of our **2021** calf crop. The top end has not been saved nor previously sold. This is the entire calf crop after two years of meticulous culling. These bulls have been screened for fertility, performance, conformation, pedigree and soundness. Each bull is semen tested and **guaranteed** to be a **sound breeding bull**.

Our bulls are raised under practical range conditions, nursing their mothers with no creep feeding. After weaning, they are on alfalfa-mix hay for growing during the winter, then go to range pasture May to December. This matures them under the practical range conditions they will face the rest of their lives – they are **NEVER** being over-fed in feedlot confinement. They are never pushed on feed. They are simply conditioned prior to our sale to be in optimum breeding condition for you. Without question, we could fatten the bulls to make them bigger today, but we know our athletically-fit bulls will perform better for you than fat bulls. We are focused on how a bull performs and produces for many years of service, and not how big and fat we can get him. We believe in allowing our bulls to grow and mature like breeding bulls should, in a normal, feasible and economical manner. Our bull lot is a row of bunks in a big pasture where the bulls are given plenty of room for exercise. Because of our practical manner of growing bulls, it is rare for one to go unsound.

We have great confidence in these **two-year-old bulls**, and are certain we have eliminated any bull with even very minor problems during our two years of selection and culling. We guarantee them to please you in every way so you will return for more bulls in future years. We welcome you to visit any time and hope to always have something new and progressive to show you, as well as a warm welcome.

—
---BUDDY WESTPHAL & family



CALF VIEW OF ROCKY MOUNTAINS

Reference Sire A

Free Lunch 7849 Polled

{	Free Lunch 708T (Polled)	{	Rio Blanco 1234 (Polled)
		{	Miss Duchess 404 (Polled)
{	Fink Amy 0323 5762 (Polled)	{	Ledger 0332 (Polled)
		{	Fink Amy 0323 5762 GM (Polled)

Every Bull Sale should offer a great “Free Lunch”. We use this carcass-proven Free Lunch herd sire to put more pounds of meat on calves and yield high marbled Prime carcasses. If you like big butts on your calves, you will appreciate having a “Free Lunch” son breeding your cows. Here is a true performance-plus package for more pounds at weaning and gains in the feedlot. We have complete confidence in the ease of calving of Free Lunch. He has even been used on heifers. His EPDs are spectacular and high accuracy. Free Lunch is in the Top 3% for Carcass Weight and Top 1% Marbling for the entire Charolais breed. This unique pedigree is packed with proven Gridmaker and Ledger bloodlines that we have used for years. You are sure to find a great “Free Lunch” here at noon and see more great Free Lunches out in our bull sale pens.

EPDs: BW -1.8 WW 66 YW 120 MTL 50 TSI 264

Reference Sire C

Ledger 348 Polled

{	LT Ledger 0332 (Polled)	{	LT Bluegrass 4017 (Polled)
		{	LT Brenda 6120 (Polled)
{	LT Stylish Wind 651 (Polled)	{	LT Wyoming Wind 4020 (Polled)
		{	LK Sculpted Style 258 (Polled)

Ledger sold for \$105,000 in the LT Sale and his son Patriot also topped \$100,000 a couple of years later. He is the leading son of Bluegrass and is one of the top sires for semen sales in the Charolais Breed. He is now a Breed Icon for multiple traits and ranks at the top in popularity. He is in the Top 2% for Rib Eye and Marbling and 1% for Scrotal Measurement. This bull’s pedigree stacks three generations of highly-valued and very-proven genetics. Bluegrass (full brother to Blue Ranger) and Wyoming Wind, are long-time favorites and proven stars in our herd for well over a decade now. Commercial cattlemen appreciate the proven calving ease and the vigor at birth, plus the extra pounds on the scales. This All-Around herd improver adds class and style, plus muscle and carcass merit. Having a good “Ledger” in your pasture will sure add dollars to your calf crop and your Ledger.

EPDs: BW -1.5 WW 48 YW 103 MTL 55 TSI 255

Reference Sire B

New Standard 8744 Polled

{	M6 New Standard 842 ET (Polled)	{	LT Rio Bravo 3181 (Polled)
		{	M6 Ms Grid Maker 2175 ET (Polled)
{	BHC Genie 32 OF 016 FL (Polled)	{	VPI Free Lunch 708T (Polled)
		{	BHC Genie 016 70 BG (Polled)

New Standard was the Charolais #1 Multi Trait Leader for many years in a row. He is also a Weaning Weight and Yearling Weight Trait Leader. His carcass traits rank in the Top 1% of the Breed for Rib Eye and Carcass Weight, and Top 1% for Scrotal Circumference. The huge 20+ inch Rib Eye measurement of this great bull is one of the largest you will see documented. He adds great volume and structure for higher weaning weight calves. His easy-calving Birth Weight EPD rounds out a “New Standard” for genetic advancement in our herd, plus in the entire Charolais Breed. His calves are born easy without sacrificing extra performance and pounds. Very predictably, it was a super Gridmaker momma that produced the famous “New Standard”. Loaded with eye appeal and performance you can depend on these genetics add thickness with class.

EPDs: BW -2.4 WW 68 YW 117 MTL 59 TSI 260

Reference Sire D

Gridmaker 627 Polled

{	GridMaker 104 ET (Polled)	{	Sir Tradition 066 (Polled)
		{	Miss Mac IV 317 (Polled)
{	WC Blue Dutchess 9029 (Polled)	{	Bluegrass 4017 (Polled)
		{	Miss Duchess 9506 (Polled)

Gridmaker has been an all-around favorite at our ranch for many years and we have chosen to continue his superior proven genetics with this spectacular M6 son that is out of the great Bluegrass x Dutchess dam that is also the mother of the very-proven Weink bull “Big Ben”. Gridmaker has done it all and proven it all from Easy Calving EPD to the Top 1% for Carcass Weight and Rib Eye, and the Top 2% for Marbling. If you want to add carcass traits with muscle plus bigger weaning weights, Gridmaker will do it right with deep, thick and stout calves. Also note the many Gridmaker dams in this bull sale that are the mothers of lots of the best performers. And note that the popular and famous Multi-Trait Leading bull, New Standard, is out of a Gridmaker daughter, too. You will always top your sale grid with Gridmaker calves.

EPDs: BW -1.3 WW 52 YW 101 MTL 53 TSI 251

Reference Sire E Sundance 6137 Polled

{	LT Sundance 2251 (Polled)	{	Ledger 0332 (Polled)
			Ballet 9219 (Polled)
{	LT Rhinestone 3030 (Polled)	{	Oakdale Duke 9003 (Polled)
			Rhinestone 1315 (Polled)

Sundance is a thick, strong, muscular bull that will add pounds of red meat and dimension while infusing carcass merit in your calf crop. With the long-proven pedigree of Ledger and Duke you can expect high performance. He is a homozygous polled "Performance King" with a Top 1% EPD ranking for WW and YW. He also ranks in the Top 1% for SC and CW, Top 3% for TSI, Top 6% for REA, plus the Top 15% for Marbling. Here is Multiple Trait Leading genes that are used heavily by breeders looking for more performance, carcass quality, fertility, and maternal value. The added pounds and performance of this sire will make your calves bigger and better. He casts a big shadow and will improve thickness and class to a high-quality calf crop.

EPDs: BW -1.0 WW 66 YW 123 MTL 57 TSI 265

Reference Sire G Resource 9022 Polled

{	CCC WC Resource 417 (Polled)	{	LT Rushmore 8060 (Polled)
			WC CCC Blue Girl 1528 (Polled)
{	CCC MS Blue Bud 502 TW (Polled)	{	LT Blue Value 7903 ET (Polled)
			Ms Bud's Avignon 209 (Polled)

Resource keeps setting the standard for easy-calving, fast-growing, fancy-looking calves. He is a brother to famous high-selling bulls Landmark and Affinity. His balanced eye appeal and muscle shape has made him a favorite in the show ring. His carcass merit is fantastic, rating in the Top 3% of all Charolais Bulls for the ever-important trait of Marbling. Check out the soggy made Resource sons in this sale--all of these super performers are out of 3-yr-old second-calf heifers. Here is your "Resource" for problem-free classy stout calves that will go on to excel in the feedlot and make Prime grading carcasses.

EPDs: BW -1.9 WW 64 YW 103 MTL 61 TSI 248

Reference Sire F Rushmore 8516 Polled

{	LT Rushmore 8060 (Polled)	{	LT Rio Bravo 3181 (Polled)
			LT Brenda's Ease 3055 (Polled)
{	WC Molly 3115 (Polled)	{	LT Bluegrass 4017 (Polled)
			LT Molly 9155 (Polled)

Rushmore is the hottest new name in the Charolais breed. He is the sire of breed high-selling bulls such as Resource, Landmark and Affinity, and is a full brother to the dam of \$105,000 Ledger. Rushmore was retired sound at age 11, though he is still selling volumes of semen. He became famous for successful easy-calving matings to thousands of commercial black and red heifers, as well as producing famous classy purebred Charolais herd sires that became Grand Champions and topped sales. The very successful Bluegrass and Gridmaker pedigree of the dam gives reliable predictability for problem-free performance. His easy calving -3.5 birth EPD is worth noting as his calves grow stout and thick. Here is a big market-topping opportunity to become part of the "Rush" for success.

EPDs: BW -3.5 WW 50 YW 95 MTL 60 TSI 243

Reference Sire H Anchor 6516 Polled

{	LT Rushmore 8060 (Polled)	{	LT Rio Bravo 3181 (Polled)
			LT Brenda's Ease 3055 (Polled)
{	WC Clarice 2214 ET (Polled)	{	LT Ledger 0332 (Polled)
			JWK Clarice J139 ET

Rushmore is the new hottest name in the Charolais breed, with unreal birth and growth spread. He is a very-proven Trait Leader that has been used to sire thousands of commercial heifers. He is the sire of breed high-selling bulls such as Resource, Landmark and Affinity, and is a full brother to the dam of the \$105,000 Ledger. Rushmore was retired sound at age 11, though he is still selling volumes of semen. We feel that Anchor may be his best son yet. He has the best pedigree in the Charolais breed with the potent Clarice genes on the very-important maternal side. You will "Anchor" a great calf crop with these dynamic bloodlines and buyers will "Rush" back every year for your high performing and classy looking calves.

EPDs: BW -2.0 WW 65 YW 115 MTL 71 TSI 256

Reference Sire I

Next Stage 5180 Polled

{	LT Stagecoach 8068 (Polled)	{	LT Western Edge 4057 (Polled)
			LT Lady Macbeth 2131 (Polled)
{	LT Missy Mae 2136 (Polled)	{	LT Ledger 0332 (Polled)
			LT Missy Mae 9121 (Polled)

The “Next Stage” of our genetic program includes this herd sire to continue the Wyoming Wind, Bluegrass, Ledger and Edge pedigrees we have successfully used for many years. This bull is a Powerhouse and All-Around Super Stud. His kind disposition is passed to his extra-gentle calves along with some extra pounds and dynamic muscle that will be noticed by your buyers. His calves will be stars with extra weaning weight and will gain efficiently in the feedlot. The packers will also reward the Prime carcasses. Stagecoaches are out of date today, but this Stagecoach x Ledger Herd Sire is ready for Prime time today and for the future.

EPDs: BW -1.2 WW 48 YW 105 MTL 46 TSI 251

Reference Sire K

Distance 5200 Polled

{	LT Silver Distance 5342 (Polled)	{	Silver Yield 3196
			Mattie 9026 (Polled)
{	LT Graceful 8012 (Polled)	{	Eatons Leader (Polled)
			Graceful 5195 (Polled)

Distance is a calving ease and multiple trait sire. Both Silver distance and his son, Long Distance, have successfully been used in AI to breed thousands of first-calf heifers in both purebred and commercial herds. He is in the top 3% of the Charolais breed for low birth weight, yet his weaning weight performance is predictably solid. This bull has excellent conformation and soundness and a very gentle attitude. His calves are short gestation, easy-going, and super quiet. Check out sons of Distance for some grass-efficient super stars that all are out of second-calf heifers yet performed well. Expect to have problem-free calves that will “Go the Distance” when you select these time-tested and popular genetics.

EPDs: BW -2.6 WW 52 YW 89 MTL 50

Reference Sire J

Mountain Man 9015 Polled

{	LT Rushmore 8060 (Polled)	{	LT Rio Bravo 3181 (Polled)
			LT Brenda's Ease 3055 (Polled)
{	WC Pearl 7013 (Polled)	{	LT Silver Distance 5342 (Polled)
			WC Capital Girl 5204 (Polled)

Mountain Man caught my eye because of his classy look with huge Butt and Nuts and his easy athletic traveling. His stellar performance data convinced me to buy an interest and use him on our second-calf heifers. His sound traveling and athletic phenotype is perfect to send him traveling to the mountains and know he will cover both sides and the top. His own 70-lb. (-3.8) birth and 836 weaning weights fit our genetic program just right. His breed-leading EPDs are now verified in his soggy-made calves that are all out of 3-yr-old mothers. From calving to carcass, he is a Star. This Mountain Man has easily earned a spot in our front pasture. Here is another source of predictable Rushmore genetics.

EPDs: BW -3.8 WW 63 YW 114 MTL 69 TSI 257

Reference Sire L

Venture 6918 Polled

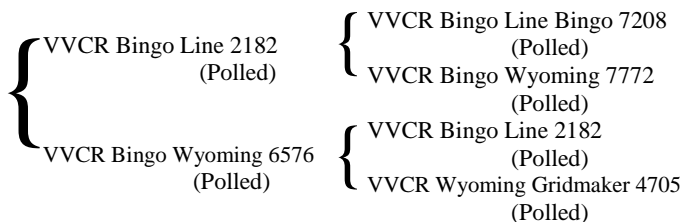
{	LT Venture 3198 (Polled)	{	Stagecoach 8068 (Polled)
			Ballet 9219 (Polled)
{	Brenda Ledger 3603 (Polled)	{	Ledger 0332 (Polled)
			Silver Brenda 0032 (Polled)

Venture is another Stagecoach son that is packed with performance. He was #1 in his large calf crop with an 891-lb. weaning weight. He ranks in the Top 6% of the Charolais breed for Carcass Weight and Top 7% for Yearling Weight. He is in the Top 20% of the breed with over 265 TSI. His sons reflect extra body, masculinity, big toolbox and big butts. Their quiet disposition and deep soggy stoutness are easily spotted and take the marketability of his calves to the bank. Here is a new Venture that will please you every day with every calf. It's an all-around value with genetics from Venture.

EPDs: BW -1.1 WW 63 YW 125 MTL 52 TSI 265

Reference Sire M

VVCR Bingo Line 8110 Polled

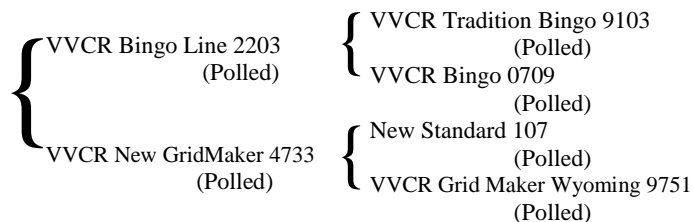


Our first Bingo calves were born on this ranch in 1968. We have valued this bloodline enough to continue using and linebreeding it for over 50 years. After more than 50 years of testing thousands of bulls of all breeds, Bingo is still the #1 Bull for Total Breeding Value on the Conception to Consumer Test. Bingo Line 8110 is our very-proven heifer bull that is bullet-proof and a “sleep at night” sire that is reliable for short gestation calves, therefore smaller and jump up and suck calves at birth. They are born with great vigor and grow stout quickly. Not just a heifer freshener, he is a herd improver that produces optimum performing and competitive calves with carcasses that are verified to grade prime. The intensive linebreeding of this pedigree assures reliability and predictability. We have sold hundreds of VVCR Bingo “Heifer Bulls” to great ranches that have successfully bred commercial heifers with total success. They return year after year for more Bingo Heifer Bulls.

EPDS: BW -4.3 WW 47 YW 76 MTL 35

Reference Sire N

VVCR Power Bingo 6104 Polled



Fifty-five years ago, Bingo impressed me as the All-Around Herd Sire that I wanted to build our breeding program around. He is still recognized today as the #1 Bull for Total Breeding Value on the Conception to Consumer Test, after thousands of bulls that have been tested. For 50 years we have linebred, outcrossed and researched these top genetics. Power Bingo is THE “Power Bull” we’ve worked to develop that will calve easy out of heifers, and still compete in performance with calves from mature cows. Bingo Line is a short gestation and easy calving sire. The dam of this bull is a treasure of genetics put together perfectly. Check out the performance of Lots 35 & 37 and note that their mothers were 2-yr-old heifers. Then look through the other “Power” bulls for easy calving with powerful performance. Note that 4 of the TOP 10 bulls in this sale have Bingo mothers !

EPDs: BW -3.6 WW 51 YW 89 MTL 41



SALE BULL SOLD IN WORKING CONDITION

Lot 1 VVCR Sundance Ledger 1201 Polled

{ Sundance 6137 (Polled)	{ LT Sundance 2251 (Polled)
	{ LT Rhinestone 3030 (Polled)
{ VVCR Ledger Whitehot 7573 Dam Age: 4 (Polled)	{ WC Ledger 4595 (Polled)
	{ VVCR Whitehot Tundra 5754 (Polled)
Tag: 1201	WWt: 831
Born: 4/13/2021	WInd: 125
BW: 87(-1.5) EPD	18 Mo Ind: 126

Sundance Ledger is the performance headliner of this sale. He was the Top Bull at weaning at 831 lbs. and earned the Lot #1 rank in this sale as the TOP BULL coming off pasture at 18-mos. of age. He is still the biggest bull in this sale. If you want to add pounds to your calf crop, this is the genetic package to use. Sundance topped the LT Bull Sale at \$82,000 and is a Breed Leader for weaning, yearling, ribeye area and carcass weight traits. Put added pounds and stretch on your calves with this big gentle performance package. Your neighbors and your calf buyers will notice and envy the difference!

Lot 3 VVCR Free Value 1206 Polled

{ Free Lunch 7849 (Polled)	{ Free Lunch 708T (Polled)
	{ Fink Amy 0323 (Polled)
{ VVCR Value Payweight 5519 Dam Age: 6 (Polled)	{ Value Added 1016 (Polled)
	{ VVCR Payweight Bingo 1730 (Polled)
Tag: 1206	WWt: 820
Born: 4/14/2021	WInd: 124
BW: 89(-1.6) EPD	18 Mo Ind: 123

Free Lunch is our best factory for big butts and gentle dispositions. Free Lunch is a Carcass King that ranks in the Top 1% for the all-important Marbling Trait and top 3% for Carcass Weight. Here is a soggy-ribbed complete-made elite stud with a huge hind quarter that carries down to his hocks. Our VVCR genetics have been long-time known for our purebred heifers as well as our customers' calves producing Top Yield and Top Grade carcasses. This Free Lunch son is a benchmark for carcass value. He has been a class favorite that visitors always spot. He has the look of a breeding bull that will impact every calf he sires. Here is a Free Lunch that you can't afford to overlook.

Lot 2 VVCR New Bingo 1322 Polled

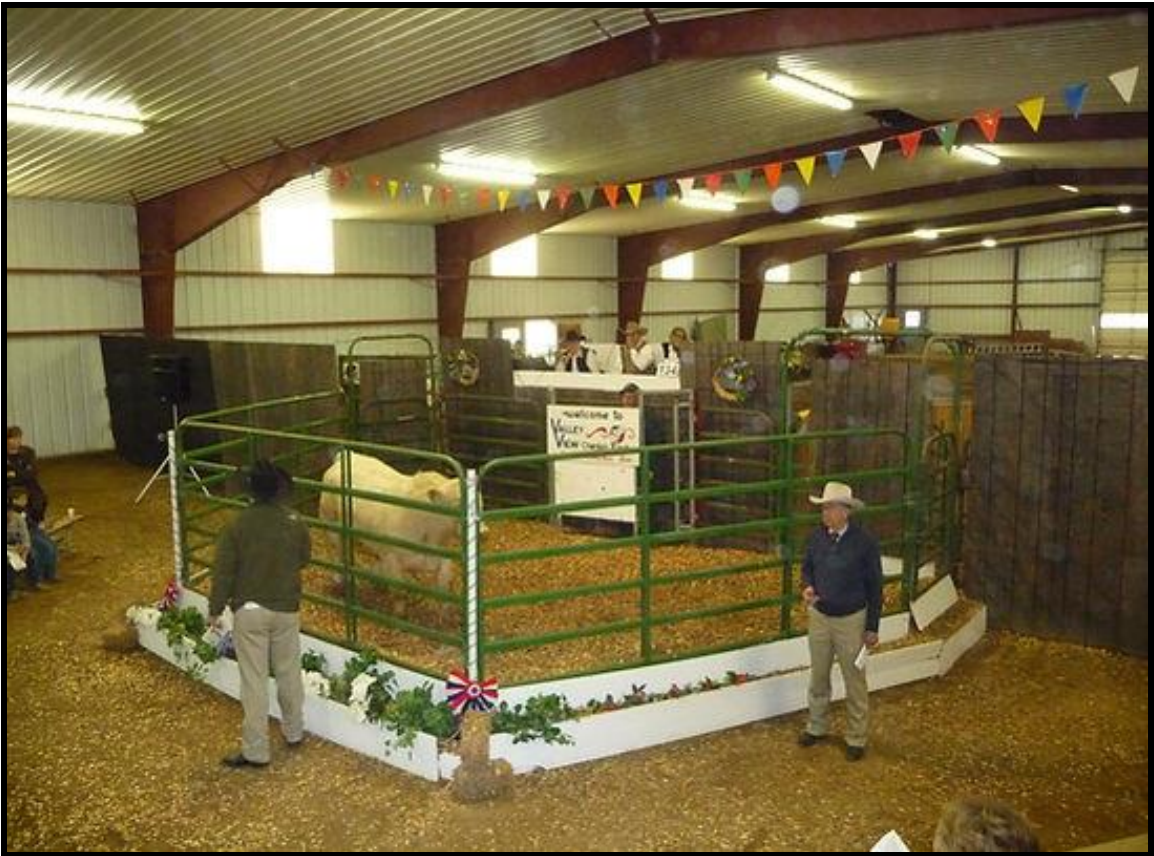
{ New Standard 8744 (Polled)	{ M6 New Standard 842 ET (Polled)
	{ BHC Genie 32 016 FL (Polled)
{ VVCR Bingo Ledger 7572 Dam Age: 4 (Polled)	{ VVCR Bingo Line 2182 (Polled)
	{ VVCR Ledger Blue 5505 (Polled)
Tag: 1322	WWt: 828
Born: 5/11/2021	WInd: 125
BW: 90(-2.7) EPD	18 Mo Ind: 124

New Bingo 1322 wears Big Boy pants and packs a solid size 46-cm toolbox. He is pure class with a deep thick herd bull look. A close second in performance with an 828-lb. weaning weight, he is a month younger than the Lot 1 and many of the bulls in this sale. New Standard is a many-year multiple trait leader and a breed favorite with tremendous semen sales and sale-topping progeny. New Bingo's 4-yr-old Bingo x Ledger dam is a class favorite with maternal dominance. Note that 4 of the Top Ten Bulls in this sale have Bingo Dams – enuf said for why we have used Bingo for over 50 years! Here is a real Herd Sire with muscle, capacity, soundness, and class in high-performance fashion.

Lot 4 VVCR Ledger Windy 1135 Polled

{ Ledger 348 (Polled)	{ LT Ledger 0332 (Polled)
	{ LT Stylish Wind 651 (Polled)
{ VVCR Windy Gridmaker 6620 Dam Age: 5 (Polled)	{ WC Windy Edge 9086 (Polled)
	{ VVCR Gridmaker Prime 9748 (Polled)
Tag: 1135	WWt: 825
Born: 4/5/2021	WInd: 124
BW: 88(-1.7) EPD	18 Mo Ind: 121

Ledger is a never-miss bull that covers all bases in genetics and the breeding business of the cattle industry. His semen sales are tops in the breed as are his progeny prices, like Patriot his \$105,000 son. He has sired thousands of calves out of commercial black or red heifers. Ledger Windy adds the genetic power of Gridmaker and Windy Edge for a balanced performance-driven pedigree and phenotype. Plenty of masculinity and muscle definition combined with a fertility score of 98 with 45-cm scrotal measurement ensures a maximum breeding job. Here is a full package for any ranch to improve their "checkbook ledger" with the first calf crop.



50TH ANNIVERSARY SALE



HEADED FOR THE SALE RING

Lot 5 VVCR New Bingo 1222 Polled

{	New Standard 8744 (Polled)	{	M6 New Standard 842 ET (Polled)
			BHC Genie 32 016 FL (Polled)
{	VVCR Bingo New 7522 Dam Age: 4 (Polled)	{	VVCR Bingo Line 2182 (Polled)
			VVCR New Tradition 5587 (Polled)
Tag:	1222	WWt:	817
Born:	4/16/2021	WInd:	124
BW:	88(-2.1) EPD	18 Mo Ind:	120

New Bingo 1222 is a $\frac{3}{4}$ brother to Lot 2 and carries the same genotype and phenotype. He has all the same credentials for a major herd improver with a bright future ahead. New Standard has stood the test of time. With thousands of progeny he remains one of the most popular and best-proven herd sires and AI Studs in the Charolais Breed. If you sell your calves by the pound, you will appreciate the muscle thickness and stoutness from front-to-back, and recognize there is power in the blood. New Bingo is a performance-driven pedigree with the numbers to back it up.

Lot 7 VVCR Free Thickness 1155 Polled

{	Free Lunch 7849 (Polled)	{	Free Lunch 708T (Polled)
			Fink Amy 0323 (Polled)
{	VVCR Thick Tundra 7778 Dam Age: 14 (Polled)	{	LT Thick Star 553 (Polled)
			VVCR Tundra Bingo 6609 (Polled)
Tag:	1155	WWt:	821
Born:	4/8/2021	WInd:	124
BW:	87(-1.1) EPD	18 Mo Ind:	119

His name "Free Thickness" describes this super stud to a tee. He has a big strong profile with epic performance and carcass genetics. Soundness and longevity are well-represented by his 14-yr-old momma that you can still see in our herd; now at 16 she is ultrasound tested to have another bull calf on 4/23/2023. With modest birth, extra growth, and quality carcass genetics, Free Thickness is truly a serious cattleman's dream. He has the added frame and length of body to stretch out a set of calves that completes a full Herd Sire package that we are proud to present in this sale.

Lot 6 VVCR Rushmore Bingo 1273 Polled

{	Rushmore 8516 (Polled)	{	LT Rushmore 8060 (Polled)
			WC Molly 3115 (Polled)
{	VVCR Bingo Gridmaker 8663 Dam Age: 3 (Polled)	{	VVCR Bingo Leader 4160 (Polled)
			VVCR Gridmaker Payweight 6545 (Polled)
Tag:	1273	WWt:	812
Born:	4/23/2021	WInd:	123
BW:	86(-2.5) EPD	18 Mo Ind:	119

Rushmore 8516 is a new Herd Sire for us, and he was used only on second-calf heifers. This Lot 6 bull represents our vision of why Rushmore was selected. Here is a great representative in an 800-lb. Powerhouse that excels in muscle thickness and athletic traveling. Lot 6 is a gentle pal that has the "It" factor and all the amenities of a herd bull. His 3-yr-old Bingo x Gridmaker dam adds more genetic predictability for producing outstanding calves. Here is calving ease with upper-end growth and performance-plus docile disposition. There is plenty of merit in this bull to get you involved in "The Rush"!

Lot 8 VVCR Ledger New 1306 Polled

{	Ledger 348	{	LT Ledger 0332
	(Polled)		(Polled)
{	VVCR New Bluegrass 7621	{	LT Stylish Wind 651
	Dam Age: 4 (Polled)		(Polled)
			New Standard 2849
			(Polled)
			VVCR Blue Grid 0731
			(Polled)
Tag:	1306	WWt:	808
Born:	5/5/2021	WInd:	123
BW:	85(-1.3) EPD	18 Mo Ind:	118

Ledger New is very easy to find in the Front Pen because there is lots of bovine beef to spot on his modest birthweight and athletic frame. You can never go wrong selecting Ledger, and crossing New Standard and Bluegrass genetics, to make the choice easy and predictable. The Super pedigree on this May calf, with a weaning weight at over 800 lbs., along with his easy-calving numbers covers all the bases. Here is a great opportunity offering up a Grand Slam for your best calf crop ever. He represents all the qualities we look for in an ideal breeding bull – he has a BIG future ahead!



HEIFER BULL SOLD IN PREVIOUS SALE



BUTTS, NUTS AND GUTS

Lot 9 VVCR Ledger Bluegrass 1217 Polled/B

{	Ledge 348 (Polled)	{	LT Ledger 0332 (Polled)
			LT Stylish Wind 651 (Polled)
{	VVCRBluegrassGridmakr6618 Dam Age: 5 (Polled)	{	Bluegrass 0353 (Polled)
			VVCR Gridmaker Wyoming 0784 (Polled)

Tag: 1217 **WWt:** 798
Born: 4/15/2021 **WInd:** 122
BW: 88(-1.1) EPD **18 Mo Ind:** 118

Lot 10 VVCR Free Bingo 1288 Polled

{	Free Lunch 7849 (Polled)	{	Free Lunch 708T (Polled)
			Fink Amy 0323 (Polled)
{	VVCR Bingo Gridmaker 5507 Dam Age: 6 (Polled)	{	VVCR Bingo Line 2203 (Polled)
			VVCR Gridmaker Gridmaker 3805 (Polled)

Tag: 1288 **WWt:** 805
Born: 4/27/2021 **WInd:** 123
BW: 88(-1.9) EPD **18 Mo Ind:** 118

Lot 11 VVCR Sundance New 1328 Polled

{	Sundance 6137 (Polled)	{	LT Sundance 2251 (Polled)
			LT Rhinestone 3030 (Polled)
{	VVCR New Bingo 7549 Dam Age: 4 (Polled)	{	FC New Standard 2849 (Polled)
			VVCR Bingo Wyo 1799 (Polled)

Tag: 1328 **WWt:** 794
Born: 5/19/2021 **WInd:** 121
BW: 92(-1.4) EPD **18 Mo Ind:** 118

Lot 12 VVCR Rushmore Ledger 1203 Polled

{	Rushmore 8516 (Polled)	{	LT Rushmore 8060 (Polled)
			WC Molly 3115 (Polled)
{	VVCR Ledger Hi Yield 8640 Dam Age: 3 (Polled)	{	WC Ledger 4595 (Polled)
			VVCR Hi Yield Bingo 2801 (Polled)

Tag: 1203 **WWt:** 802
Born: 4/14/2021 **WInd:** 123
BW: 83(-2.5) EPD **18 Mo Ind:** 117

Lot 13 VVCR Rushmore Sundance 1151 Polled

{	Rushmore 8516 (Polled)	{	LT Rushmore 8060 (Polled)
			WC Molly 3115 (Polled)
{	VVCR Sundance Primed 8507 Dam Age: 3 (Polled)	{	LT Sundance 6137 (Polled)
			VVCR Primed Tradition 2847 (Polled)

Tag: 1151 **WWt:** 792
Born: 4/8/2021 **WInd:** 121
BW: 84(-2.8) EPD **18 Mo Ind:** 117

Lot 14 VVCR Anchor Primed 1284 Polled

{	Anchor 6516 (Polled)	{	LT Rushmore 8060 (Polled)
			WC Clarice 2214 (Polled)
{	VVCR Primed Gridmaker5563 Dam Age: 6 (Polled)	{	LT Primed 3288 (Polled)
			VVCR Gridmaker Wyoming 7789 (Polled)

Tag: 1284 **WWt:** 790
Born: 4/25/2021 **WInd:** 121
BW: 85(-0.8) EPD **18 Mo Ind:** 117

Lot 15 VVCR New Standard Blue 1116 Polled

{	New Standard 8744 (Polled)	{	M6 New Standard 842 ET (Polled)
			BHC Genie 32 016 FL (Polled)
{	VVCR New Bluegrass 7592 Dam Age: 4 (Polled)	{	New Standard 2851 (Polled)
			VVCR Bluegrass Primed 2858 (Polled)

Tag: 1116 **WWt:** 795
Born: 4/2/2021 **WInd:** 121
BW: 88(-1.4) EPD **18 Mo Ind:** 117

Lot 16 VVCR Gridmaker Primed 1168 Polled

{	Gridmaker 627 (Polled)	{	M6 Gridmaker 104 ET (Polled)
			WC Blue Dutchess 9029 (Polled)
{	VVCR Primed Thick 4765 Dam Age: 7 (Polled)	{	LT Primed 3288 (Polled)
			VVCR Thick Tradition 5827 (Polled)

Tag: 1168 **WWt:** 789
Born: 4/10/2021 **WInd:** 120
BW: 90(-0.7) EPD **18 Mo Ind:** 117

Lot 17 VVCR Next Windy 1229 Polled

{	Next Stage 5180 (Polled)	{	LT Stagecoach 8068 (Polled)
			LT Missy Mae 2136 (Polled)
{	VVCR Windy Edge Trad 3776 Dam Age: 8 (Polled)	{	Windy Edge 9086 (Polled)
			VVCR Tradition Prime 5705 (Polled)

Tag: 1229 **WWt:** 785
Born: 4/16/2021 **WInd:** 120
BW: 86(-1.7) EPD **18 Mo Ind:** 116

Lot 18 VVCR Next Valued 1307 Polled

{	Next Stage 5180 (Polled)	{	LT Stagecoach 8068 (Polled)
			LT Missy Mae 2136 (Polled)
{	VVCR Valued Wyoming 8509 Dam Age: 3 (Polled)	{	LT Value Added 1016 (Polled)
			VVCR Wyoming Congress 9752 (Polled)

Tag: 1307 **WWt:** 788
Born: 5/6/2021 **WInd:** 120
BW: 89(-1.5) EPD **18 Mo Ind:** 116

Lot 19 VVCR Free Wyoming 1166 Polled

{	Free Lunch 7849 (Polled)	{	Free Lunch 708T (Polled)
			Fink Amy 0323 (Polled)
{	VVCR Wyoming Thick 3842 Dam Age: 8 (Polled)	{	Wyoming Prime 933 (Polled)
			VVCR Thick Wyoming 5750 (Polled)

Tag: 1166 **WWt:** 792
Born: 4/10/2021 **WInd:** 122
BW: 87(-1.7) EPD **18 Mo Ind:** 116

Lot 20 VVCR Venture Colt 1143 Polled

{	Venture 6918 (Polled)	{	LT Venture 3198 (Polled)
			JJ Brenda Ledger 3603 (Polled)
{	VVCR Colt 45 Bluegrass 8528 Dam Age: 3 (Polled)	{	Colt 45 249Z (Polled)
			VVCR Bluegrass Unlimited 4839 (Polled)

Tag: 1143 **WWt:** 787
Born: 4/7/2021 **WInd:** 120
BW: 84(-1.6) EPD **18 Mo Ind:** 116

Lot 21 VVCR Sundance Distance 1287 Polled

{	Sundance 6137 (Polled)	{	LT Sundance 2251 (Polled)
			LT Rhinestone 3030 (Polled)
{	VVCR Distance Colt 45 7643 Dam Age: 4 (Polled)	{	LT Distance 5200 (Polled)
			VVCR Colt 45 Primed 4760 (Polled)

Tag: 1287 **WWt:** 780
Born: 4/26/2021 **WInd:** 119
BW: 88(-1.6) EPD **18 Mo Ind:** 116

Lot 22 VVCR Free Ledger 1108 Polled

{	Free Lunch 7849 (Polled)	{	Free Lunch 708T (Polled)
			Fink Amy 0323 (Polled)
{	VVCR Ledger Primed 8637 Dam Age: 3 (Polled)	{	LT Ledger 348 (Polled)
			VVCR Primed Unlimited 8840 (Polled)

Tag: 1108 **WWt:** 785
Born: 4/1/2023 **WInd:** 120
BW: 85(-1.8) EPD **18 Mo Ind:** 116

Lot 23 VVCR Anchor Hi Yield 1157 Polled

{	Anchor 6516 (Polled)	{	LT Rushmore 8060 (Polled)
			WC Clarice 2214 (Polled)
{	VVCR Hi Yield Bingo 2801 Dam Age: 9 (Polled)	{	VVCR Hi Yield Thick 9188 (Polled)
			VVCR Bingo Wyo 5710 (Polled)

Tag: 1157 **WWt:** 784
Born: 4/8/2021 **WInd:** 120
BW: 87(-2.4) EPD **18 Mo Ind:** 116

Lot 24 VVCR Resource Distance 1128 Polled

{	Resource 9022 (Polled)	{	WC Resource 417 (Polled)
			CCC MS Blue Bud 502 (Polled)
{	VVCR Distance Primed 8540 Dam Age: 3 (Polled)	{	LT Distance 5200 (Polled)
			VVCR Primed Bingo 5534 (Polled)

Tag: 1128 **WWt:** 778
Born: 4/3/2021 **WInd:** 119
BW: 84(-2.6) EPD **18 Mo Ind:** 115

Lot 25 VVCR New Free 1309 Polled

{	New Standard 8744 (Polled)	{	M6 New Standard 842 ET (Polled)
	VVCR Free Gridmaker 7605 Dam Age: 4 (Polled)		BHC Genie 32 016 FL (Polled)
		{	Free Lunch FC 4208 (Polled)
			VVCR Gridmaker Leading 4727 (Polled)

Tag: 1309 **WWt:** 782
Born: 5/6/2021 **WInd:** 119
BW: 82(-2.2) EPD **18 Mo Ind:** 115

Lot 26 VVCR Anchor Gridmaker 1211 Polled

{	Anchor 6516 (Polled)	{	LT Rushmore 8060 (Polled)
	VVCR Gridmaker Wyo 6508 Dam Age: 5 (Polled)		WC Clarice 2214 (Polled)
		{	Gridmaker 2871 (Polled)
			VVCR Wyoming Line 6856 (Polled)

Tag: 1211 **WWt:** 790
Born: 4/14/2021 **WInd:** 121
BW: 86(-2.4) EPD **18 Mo Ind:** 115

Lot 27 VVCR Sundance Bingo 1278 Polled

{	Sundance 6137 (Polled)	{	LT Sundance 2251 (Polled)
	VVCR Bingo Line 7667 Dam Age: 4 (Polled)		LT Rhinestone 3030 (Polled)
		{	VVCR Bingo Line 2203 (Polled)
			VVCR Bingo Gridmaker 5507 (Polled)

Tag: 1278 **WWt:** 786
Born: 4/24/2021 **WInd:** 120
BW: 86(-1.9) EPD **18 Mo Ind:** 115

Lot 28 VVCR Resource Distance 1240 Polled

{	Resource 9022 (Polled)	{	WC Resource 417 (Polled)
	VVCR Distance Gridmaker 8694 Dam Age: 3 (Polled)		CCC MS Blue Bud 502 (Polled)
		{	LT Distance 5200 (Polled)
			VVCR Gridmaker Wyoming 5606 (Polled)

Tag: 1240 **WWt:** 780
Born: 4/18/2021 **WInd:** 119
BW: 87(-0.8) EPD **18 Mo Ind:** 115

Lot 29 VVCR Resource Sundance 1234 Polled

{	Resource 9022 (Polled)	{	WC Resource 417 (Polled)
	VVCR Sundance Prime 8655 Dam Age: 3 (Polled)		CCC MS Blue Bud 502 (Polled)
		{	LT Sundance 6137 (Polled)
			VVCR Double Prime 3766 (Polled)

Tag: 1234 **WWt:** 778
Born: 4/17/2021 **WInd:** 119
BW: 86(-1.0) EPD **18 Mo Ind:** 114

Lot 30 VVCR Distance Blue 1324 Polled

{	Distance 5200 (Polled)	{	LT Silver Distance 5342 (Polled)
	VVCR Blue Gridmaker 1748 Dam Age: 10 (Polled)		LT Graceful 8012
		{	LT Blue Ranger 6093 (Polled)
			VVCR Gridmaker Wyoming 8746 (Polled)

Tag: 1324 **WWt:** 775
Born: 5/12/2021 **WInd:** 118
BW: 87(-2.8) EPD **18 Mo Ind:** 114

Lot 31 VVCR Free Primed 1271 Polled

{	Free Lunch 7849 (Polled)	{	Free Lunch 708T (Polled)
	VVCR Primed Hi Yield 2763 Dam Age: 9 (Polled)		Fink Amy 0323 (Polled)
		{	LT Primed 3288 (Polled)
			VVCR Hi Yield Tradition 7716 (Polled)

Tag: 1271 **WWt:** 790
Born: 4/23/2021 **WInd:** 121
BW: 89(-2.8) EPD **18 Mo Ind:** 114

Lot 32 VVCR Mountain Wyoming 1158 Polled

{	Mountain Man 9015 (Polled)	{	LT Rushmore 8060 (Polled)
	VVCR Wyoming Primed 8744 Dam Age: 13 (Polled)		WC Pearl 7013 (Polled)
		{	Primed 3288 (Polled)
			VVCR Wyoming Bingo 1665 (Polled)

Tag: 1158 **WWt:** 786
Born: 4/8/2021 **WInd:** 120
BW: 86(-3.5) EPD **18 Mo Ind:** 114

Lot 33 VVCR Grid Value 1242 Polled

{	Gridmaker 627 (Polled)	{	M6 Gridmaker 104 ET (Polled)
{	VVCR Value Added Easy3713 Dam Age: 8 (Polled)	{	WC Blue Dutchess 9029 (Polled)
{		{	Value Added 1016 (Polled)
{		{	VVCR Easy Sure 9853 (Polled)

Tag: 1242 **WWt:** 779
Born: 4/18/2021 **WInd:** 119
BW: 90(-0.8) EPD **18 Mo Ind:** 114

Lot 34 VVCR Resource Wyoming 1243 Polled

{	Resource 9022 (Polled)	{	WC Resource 417 (Polled)
{	VVCR Wyoming Easy 8646 Dam Age: 3 (Polled)	{	CCC MS Blue Bud 502 (Polled)
{		{	LT Wind 5494 (Polled)
{		{	VVCR Easy Wyoming 2720 (Polled)

Tag: 1243 **WWt:** 785
Born: 4/18/2021 **WInd:** 120
BW: 86(-1.7) EPD **18 Mo Ind:** 114

Lot 35 VVCR Power Ledger 1200 Polled

{	VVCR Power Bingo 6104 (Polled)	{	VVCR Bingo Line 2203 (Polled)
{	VVCR Ledger Bingo 9576 Dam Age: Hfr (Polled)	{	VVCR New Gridmaker 4733 (Polled)
{		{	LT Ledger 4595 (Polled)
{		{	VVCR Bingo Gridmaker 0745 (Polled)

Tag: 1200 **WWt:** 772
Born: 4/13/2021 **WInd:** 118
BW: 84(-2.2) EPD **18 Mo Ind:** 113

Lot 36 VVCR Mountain Value 1342 Polled

{	Mountain Man 9015 (Polled)	{	LT Rushmore 8060 (Polled)
{	VVCR Value Leading 6625 Dam Age: 5 (Polled)	{	WC Pearl 7013 (Polled)
{		{	WC Value Added 3520 (Polled)
{		{	VVCR Leading Bingo 1757 (Polled)

Tag: 1342 **WWt:** 786
Born: 6/2/2023 **WInd:** 120
BW: 88(-1.8) EPD **18 Mo Ind:** 113

Lot 37 VVCR Power Free 1153 Polled

{	VVCR Power Bingo 6104 (Polled)	{	VVCR Bingo Line 2203 (Polled)
{	VVCR Free Colt 9521 Dam Age: Hfr (Polled)	{	VVCR New Gridmaker 4733 (Polled)
{		{	Free Lunch FC 5652 (Polled)
{		{	VVCR Colt 45 Primed 4760 (Polled)

Tag: 1153 **WWt:** 768
Born: 4/8/2021 **WInd:** 118
BW: 86(-2.0) EPD **18 Mo Ind:** 113

Lot 38 VVCR Next Gridmaker 1117 Polled

{	Next Stage 5180 (Polled)	{	LT Stagecoach 8068 (Polled)
{	VVCR Gridmaker Trad 4814 Dam Age: 7 (Polled)	{	LT Missy Mae 2136 (Polled)
{		{	Gridmaker 9890 (Polled)
{		{	VVCR Tradition Gridmaker 9795 (Polled)

Tag: 1117 **WWt:** 783
Born: 4/3/2023 **WInd:** 119
BW: 84(-2.1) EPD **18 Mo Ind:** 113

Lot 39 VVCR Venture New 1335 Polled

{	Venture 6918 (Polled)	{	LT Venture 3198 (Polled)
{	VVCR New Payweight 8566 Dam Age: 3 (Polled)	{	JJ Brenda Ledger 3603 (Polled)
{		{	New Standard 2849 (Polled)
{		{	VVCR Payweight Bingo 1730 (Polled)

Tag: 1335 **WWt:** 775
Born: 5/25/2023 **WInd:** 118
BW: 88(-1.4) EPD **18 Mo Ind:** 113

Lot 40 VVCR Ledger Value 1237 Polled

{	Ledger 7404 (Polled)	{	LT Ledger 0332 (Polled)
{	VVCR Value Wyo 4799 Dam Age: 7 (Polled)	{	LT Brenda 3307 (Polled)
{		{	Value Added 1016 (Polled)
{		{	VVCR Wyoming Line 6856 (Polled)

Tag: 1237 **WWt:** 778
Born: 4/17/2021 **WInd:** 119
BW: 87(-1.8) EPD **18 Mo Ind:** 112

Lot 41 VVCR Mountain Gridmaker 1195 Polled

{	Mountain Man 9015 (Polled)	{	LT Rushmore 8060 (Polled)
			WC Pearl 7013 (Polled)
{	VVCR Gridmaker Wyo 4787 Dam Age: 7 (Polled)	{	Gridmaker 9890 (Polled)
			VVCR Wyoming Primed 8744 (Polled)

Tag: 1195 **WWt:** 777
Born: 4/13/2021 **WInd:** 118
BW: 86(-2.9) EPD **18 Mo Ind:** 112

Lot 42 VVCR Free Colt 45 1165 Polled

{	Free Lunch FC 5652 (Polled)	{	Free Lunch 708T (Polled)
			Fink Megan 7750 (Polled)
{	VVCR Colt 45 Value 8536 Dam Age: 3 (Polled)	{	WC Colt 45 249Z (Polled)
			VVCR Value Blue 4721 (Polled)

Tag: 1165 **WWt:** 776
Born: 4/10/2021 **WInd:** 118
BW: 87(-2.0) EPD **18 Mo Ind:** 112

Lot 43 VVCR New Value 1235 Polled

{	New Standard 8744 (Polled)	{	M6 New Standard 842 ET (Polled)
			BHC Genie 32 016 FL (Polled)
{	VVCR Valued Thick 7653 Dam Age: 4 (Polled)	{	Value Added 1016 (Polled)
			VVCR Thick Wyoming 8881 (Polled)

Tag: 1235 **WWt:** 781
Born: 4/17/2021 **WInd:** 119
BW: 84(-1.8) EPD **18 Mo Ind:** 112

Lot 44 VVCR Distance Colt 1223 Polled

{	Distance 5200 (Polled)	{	LT Silver Distance 5342 (Polled)
			LT Graceful 8012
{	VVCR Colt 45 Gridmaker 4862 Dam Age: 7 (Polled)	{	Colt 45 249Z (Polled)
			VVCR Gridmaker Wyoming 1760 (Polled)

Tag: 1223 **WWt:** 767
Born: 4/16/2021 **WInd:** 117
BW: 85(-1.5) EPD **18 Mo Ind:** 112

Lot 45 VVCR Free Sundance 1266 Polled

{	Free Lunch FC 5652 (Polled)	{	Free Lunch 708T (Polled)
			Fink Megan 7750 (Polled)
{	VVCR Sundance Prime 8548 Dam Age: 3 (Polled)	{	Sundance 6137 (Polled)
			VVCR Prime Gridmaker 2840 (Polled)

Tag: 1266 **WWt:** 774
Born: 4/21/2021 **WInd:** 118
BW: 86(-1.6) EPD **18 Mo Ind:** 112

Lot 46 VVCR Ledger Bluegrass 1329 Polled

{	Ledger 7404 (Polled)	{	LT Ledger 0332 (Polled)
			LT Brenda 3307 (Polled)
{	VVCR Bluegrass Thick 5637 Dam Age: 6 (Polled)	{	Bluegrass 1007 (Polled)
			VVCR Thick Wyoming 8881 (Polled)

Tag: 1329 **WWt:** 768
Born: 5/21/2021 **WInd:** 117
BW: 88(-1.3) EPD **18 Mo Ind:** 112

Lot 47 VVCR Ledger Tradition 1279 DH

{	Ledger 348 (Polled)	{	LT Ledger 0332 (Polled)
			LT Stylish Wind 651 (Polled)
{	VVCR Tradition Gridmkr 9795 Dam Age: 12 (Polled)	{	VVCR Tradition Bingo 3205 (Polled)
			VVCR Gridmaker 7762 (Polled)

Tag: 1279 **WWt:** 780
Born: 4/24/2021 **WInd:** 119
BW: 86(-1.6) EPD **18 Mo Ind:** 112

Lot 48 VVCR Distance Primed 1129 Polled/B

{	Distance 5200 (Polled)	{	LT Silver Distance 5342 (Polled)
			LT Graceful 8012
{	VVCR Prime Gridmaker 6592 Dam Age: 5 (Polled)	{	Prime Wind 940 (Polled)
			VVCR Gridmaker Tradition 9731 (Polled)

Tag: 1129 **WWt:** 773
Born: 4/4/2021 **WInd:** 118
BW: 87(-1.3) EPD **18 Mo Ind:** 112

Lot 49 VVCR Venture Valued 1173 Polled

{	Venture 6918	{	LT Venture 3198
	(Polled)		(Polled)
{	VVCR Valued Gridmaker8501	{	JJ Brenda Ledger 3603
	Dam Age: 3 (Polled)		(Polled)
			LT Value Added 1016
			(Polled)
			VVCR Gridmaker Whitehot 1830
			(Polled)

Tag: 1173 **WWt:** 760
Born: 4/11/2021 **WInd:** 116
BW: 85(-0.7) EPD **18 Mo Ind:** 112

Lot 50 VVCR Free Gridmaker 1320 Polled

{	Free Lunch 7849	{	Free Lunch 708T
	(Polled)		(Polled)
{	VVCR Gridmaker Prime 6624	{	Fink Amy 0323
	Dam Age: 5 (Polled)		(Polled)
			FC Gridmaker 2871
			(Polled)
			VVCR Prime Sure 5719
			(Polled)

Tag: 1320 **WWt:** 767
Born: 5/10/2021 **WInd:** 117
BW: 87(-1.1) EPD **18 Mo Ind:** 111

Lot 51 VVCR Resource Distance 1232 Polled

{	Resource 9022	{	WC Resource 417
	(Polled)		(Polled)
{	VVCRDistance Wyoimng8672	{	CCC MS Blue Bud 502
	Dam Age: 3 (Polled)		(Polled)
			LT Distance 5200
			(Polled)
			VVCR Wyoming Prime 5510
			(Polled)

Tag: 1232 **WWt:** 766
Born: 4/17/2021 **WInd:** 117
BW: 85(-1.6) EPD **18 Mo Ind:** 111

Lot 52 VVCR Ledger Payweight 1236 Polled

{	Ledger 7404	{	LT Ledger 0332
	(Polled)		(Polled)
{	VVCR Payweight Gridmaker 4788	{	LT Brenda 3307
	Dam Age: 7 (Polled)		(Polled)
			Payweight 635
			(Polled)
			VVCR Gridmaker Unlimited 9768
			(Polled)

Tag: 1236 **WWt:** 772
Born: 4/17/2021 **WInd:** 118
BW: 88(-1.1) EPD **18 Mo Ind:** 111

Lot 53 VVCR Ledger Gridmaker 1150 Polled

{	Ledger 348	{	LT Ledger 0332
	(Polled)		(Polled)
{	VVCR Gridmaker Sure 9701	{	LT Stylish Wind 651
	Dam Age: 12 (Polled)		(Polled)
			Gridmaker 4110
			(Polled)
			VVCR Sure Tradition 0634
			(Polled)

Tag: 1150 **WWt:** 768
Born: 4/7/2021 **WInd:** 117
BW: 86(-0.3) EPD **18 Mo Ind:** 111

Lot 54 VVCR Ledger Gridmaker 1318 Polled

{	Ledger 7404	{	LT Ledger 0332
	(Polled)		(Polled)
{	VVCR Gridmaker Line 4720	{	LT Brenda 3307
	Dam Age: 7 (Polled)		(Polled)
			FC Gridmaker 9890
			(Polled)
			VVCR Gridmaker Tundra 8726
			(Polled)

Tag: 1318 **WWt:** 770
Born: 5/10/2021 **WInd:** 118
BW: 89(-1.2) EPD **18 Mo Ind:** 111

Lot 55 VVCR Free Value 1182 Polled

{	Free Lunch FC 5652	{	Free Lunch 708T
	(Polled)		(Polled)
{	VVCR Valued Wyoming 8535	{	Fink Megan 7750
	Dam Age: 3 (Polled)		(Polled)
			Value Added 1016
			(Polled)
			VVCR Leading Wyoming 0740
			(Polled)

Tag: 1182 **WWt:** 760
Born: 4/12/2021 **WInd:** 116
BW: 88(-1.8) EPD **18 Mo Ind:** 111

Lot 56 VVCR Resource Ledger 1257 Polled

{	Resource 9022	{	WC Resource 417
	(Polled)		(Polled)
{	VVCR Ledger Gridmaker 8561	{	CCC MS Blue Bud 502
	Dam Age: 3 (Polled)		(Polled)
			Ledger 348
			(Polled)
			VVCR Gridmaker Prime 1870
			(Polled)

Tag: 1257 **WWt:** 765
Born: 4/20/2021 **WInd:** 117
BW: 86(-0.8) EPD **18 Mo Ind:** 111

Lot 57 VVCR Power Network 1106 Polled

{	VVCR Power Bingo 6104 (Polled)	{	VVCR Bingo Line 2203 (Polled)
	VVCR Network Choice 9546 Dam Age: Hfr (Polled)		VVCR New Gridmaker 4733 (Polled)
{		{	WC CCC Network 6182 (Polled)
			VVCR Long Prime 6629 (Polled)

Tag: 1106 **WWt:** 758
Born: 4/1/2023 **WInd:** 115
BW: 82(-3.4) EPD **18 Mo Ind:** 110

Lot 58 VVCR Gridmaker Primed 1186 Polled

{	Gridmaker 627 (Polled)	{	M6 Gridmaker 104 ET (Polled)
	VVCR Double Prime 2977 Dam Age: 8 (Polled)		WC Blue Dutchess 9029 (Polled)
{		{	LT Prime Wind 940 (Polled)
			VVCR Prime Bingo 5771 (Polled)

Tag: 1186 **WWt:** 763
Born: 4/12/2021 **WInd:** 116
BW: 85(-2.5) EPD **18 Mo Ind:** 110

Lot 59 VVCR Free Bingo 1152 Polled

{	Free Lunch 7849 (Polled)	{	Free Lunch 708T (Polled)
	VVCR Bingo Gridmaker 1733 Dam Age: 10 (Polled)		Fink Amy 0323 (Polled)
{		{	VVCR Bingo Line 1148 (Polled)
			VVCR Gridmaker Wyoming 9740 (Polled)

Tag: 1152 **WWt:** 767
Born: 4/8/2021 **WInd:** 117
BW: 85(-1.5) EPD **18 Mo Ind:** 110

Lot 60 VVCR Gridmaker Line 1172 Polled

{	Gridmaker 627 (Polled)	{	M6 Gridmaker 104 ET (Polled)
	VVCR Gridmaker White 1830 Dam Age: 10 (Polled)		WC Blue Dutchess 9029 (Polled)
{		{	BCC Gridmaker 817 (Polled)
			VVCR Whitehot Bingo 6764 (Polled)

Tag: 1172 **WWt:** 756
Born: 4/10/2021 **WInd:** 115
BW: 90(-0.4) EPD **18 Mo Ind:** 110

Lot 61 VVCR Rushmore Windy 1204 Polled

{	Rushmore 8516 (Polled)	{	LT Rushmore 8060 (Polled)
	VVCR Windy Gridmaker 8605 Dam Age: 3 (Polled)		WC Molly 3115 (Polled)
{		{	LT Wind 5494 (Polled)
			VVCR Gridmaker Wyoming 8712 (Polled)

Tag: 1204 **WWt:** 758
Born: 4/14/2021 **WInd:** 116
BW: 82(-2.2) EPD **18 Mo Ind:** 110

Lot 62 VVCR Rushmore Value 1282 Polled

{	Rushmore 8516 (Polled)	{	LT Rushmore 8060 (Polled)
	VVCR Valued Tradition 8537 Dam Age: 3 (Polled)		WC Molly 3115 (Polled)
{		{	Value Added 1016 (Polled)
			VVCR Tradition Wyo 1777 (Polled)

Tag: 1282 **WWt:** 755
Born: 4/25/2021 **WInd:** 115
BW: 86(-3.4) EPD **18 Mo Ind:** 110

Lot 63 VVCR Ledger Gridmaker 1228 Polled

{	Ledger 348 (Polled)	{	LT Ledger 0332 (Polled)
	VVCR Gridmaker Primed4773 Dam Age: 7 (Polled)		LT Stylish Wind 651 (Polled)
{		{	Gridmaker 9890 (Polled)
			VVCR Primed Wyoming 9734 (Polled)

Tag: 1228 **WWt:** 750
Born: 4/16/2021 **WInd:** 115
BW: 84(-1.8) EPD **18 Mo Ind:** 109

Lot 64 VVCR Sundance Long 1321 Polled

{	Sundance 6137 (Polled)	{	LT Sundance 2251 (Polled)
	VVCR Long Blue 7576 Dam Age: 4 (Polled)		LT Rhinestone 3030 (Polled)
{		{	Long Choice 2069 (Polled)
			VVCR Blue Hi Yield 1819 (Polled)

Tag: 1321 **WWt:** 752
Born: 5/10/2021 **WInd:** 115
BW: 87(-0.7) EPD **18 Mo Ind:** 109

Lot 65 VVCR Next Stage Windy 1142 Polled

{	Next Stage 5180 (Polled)	{	LT Stagecoach 8068 (Polled)
			LT Missy Mae 2136 (Polled)
{	VVCR Windy Bluegrass 7511 Dam Age: 4 (Polled)	{	WC Windy Edge 9086 (Polled)
			VVCR Bluegrass Primed 3735 (Polled)

Tag: 1142 **WWt:** 757
Born: 4/6/2021 **WInd:** 116
BW: 83(-0.7) EPD **18 Mo Ind:** 109

Lot 66 VVCR Mountain Grid 1334 Polled

{	Mountain Man 9015 (Polled)	{	LT Rushmore 8060 (Polled)
			WC Pearl 7013 (Polled)
{	VVCRGridmakrWyoming1760 Dam Age: 10 (Polled)	{	Gridmaker 817 (Polled)
			VVCR Wyoming Tundra 2524 (Polled)

Tag: 1334 **WWt:** 748
Born: 5/25/2023 **WInd:** 115
BW: 85(-3.2) EPD **18 Mo Ind:** 110

Lot 67 VVCR New Ledger 1272 Polled

{	New Standard 8744 (Polled)	{	M6 New Standard 842 ET (Polled)
			BHC Genie 32 016 FL (Polled)
{	VVCR Ledger Blue 7666 Dam Age: 4 (Polled)	{	WC Ledger 4595 (Polled)
			VVCR Blue Sure 8808 (Polled)

Tag: 1272 **WWt:** 755
Born: 4/23/2021 **WInd:** 115
BW: 84(-3.8) EPD **18 Mo Ind:** 109

Lot 68 VVCR Power Network 1197 Polled

{	VVCR Power Bingo 6104 (Polled)	{	VVCR Bingo Line 2203 (Polled)
			VVCR New Gridmaker 4733 (Polled)
{	VVCR Network Wind 9547 Dam Age: Hfr (Polled)	{	WC CCC Network 6182 (Polled)
			VVCR Windy Gridmaker 6653 (Polled)

Tag: 1197 **WWt:** 740
Born: 4/13/2021 **WInd:** 113
BW: 78(-2.5) EPD **18 Mo Ind:** 109

Lot 69 VVCR Ledger Primed 1209 Polled

{	Ledger 7404 (Polled)	{	LT Ledger 0332 (Polled)
			LT Brenda 3307 (Polled)
{	VVCR Primed Tradition 8799 Dam Age: 13 (Polled)	{	LT Primed 3288 (Polled)
			VVCR Tradition Bingo 9556 (Polled)

Tag: 1209 **WWt:** 746
Born: 4/14/2021 **WInd:** 114
BW: 90(-2.1) EPD **18 Mo Ind:** 109

Lot 70 VVCR Next Wyoming 1227 Polled

{	Next Stage 5180 (Polled)	{	LT Stagecoach 8068 (Polled)
			LT Missy Mae 2136 (Polled)
{	VVCRWyomingCongres 9752 Dam Age: 12 (Polled)	{	Wyoming Wind 0-2K (Polled)
			VVCR Congress Bingo 7528 (Polled)

Tag: 1227 **WWt:** 744
Born: 4/16/2021 **WInd:** 114
BW: 86(-1.5) EPD **18 Mo Ind:** 109

Lot 71 VVCR Free Gridmaker 1120 Polled

{	Free Lunch 7849 (Polled)	{	Free Lunch 708T (Polled)
			Fink Amy 0323 (Polled)
{	VVCRGridmakrPayweigh4811 Dam Age: 7 (Polled)	{	Gridmaker 817 (Polled)
			VVCR Payweight Bingo 1730 (Polled)

Tag: 1120 **WWt:** 754
Born: 4/3/2021 **WInd:** 115
BW: 87(-2.5) EPD **18 Mo Ind:** 109

Lot 72 VVCR Resource Ledger 1293 Polled

{	Resource 9022 (Polled)	{	WC Resource 417 (Polled)
			CCC MS Blue Bud 502 (Polled)
{	VVCR Ledger Gridmaker 8620 Dam Age: 3 (Polled)	{	WC Ledger 4595 (Polled)
			VVCR Gridmaker Wyoming 9740 (Polled)

Tag: 1293 **WWt:** 744
Born: 4/29/2021 **WInd:** 114
BW: 85(-0.3) EPD **18 Mo Ind:** 109

Lot 73 VVCR Resource Valued 1316 Polled

{ Resource 9022 (Polled)	{ WC Resource 417 (Polled)
{ VVCR Valued Gridmaker8523 Dam Age: 3 (Polled)	{ CCC MS Blue Bud 502 (Polled)
{	{ LT Value Added 1016 (Polled)
{	{ VVCR Blue Gridmaker 1748 (Polled)

Tag: 1316 **WWt:** 746
Born: 5/9/2021 **WInd:** 114
BW: 88(-1.5) EPD **18 Mo Ind:** 109

Lot 74 VVCR Power Ledger 1258 Polled

{ VVCR Power Bingo 6104 (Polled)	{ VVCR Bingo Line 2203 (Polled)
{ VVCR Ledger Gridmaker 9601 Dam Age: Hfr (Polled)	{ VVCR New Gridmaker 4733 (Polled)
{	{ LT Ledger 7404 (Polled)
{	{ VVCR Gridmaker Whitehot 4724 (Polled)

Tag: 1258 **WWt:** 728
Born: 4/20/2021 **WInd:** 111
BW: 83(-2.1) EPD **18 Mo Ind:** 109

Lot 75 VVCR Anchor Value 1311 Polled

{ Anchor 6516 (Polled)	{ LT Rushmore 8060 (Polled)
{ VVCR Value Blue 4859 Dam Age: 7 (Polled)	{ WC Clarice 2214 (Polled)
{	{ Value Added 1016 (Polled)
{	{ VVCR Blue Sure 8808 (Polled)

Tag: 1311 **WWt:** 740
Born: 5/7/2021 **WInd:** 113
BW: 90(-1.9) EPD **18 Mo Ind:** 109

Lot 76 VVCR Anchor Value 1286 Polled

{ Anchor 6516 (Polled)	{ LT Rushmore 8060 (Polled)
{ VVCR Value Gridmaker 6513 Dam Age: 5 (Polled)	{ WC Clarice 2214 (Polled)
{	{ Value Added 1016 (Polled)
{	{ VVCR Gridmaker Wyo 2732 (Polled)

Tag: 1286 **WWt:** 750
Born: 4/25/2021 **WInd:** 115
BW: 86(-0.9) EPD **18 Mo Ind:** 109

Lot 77 VVCR Anchor Hi Yield 1299 Polled

{ Anchor 6516 (Polled)	{ LT Rushmore 8060 (Polled)
{ VVCR Hi Yield Easy 3836 Dam Age: 7 (Polled)	{ WC Clarice 2214 (Polled)
{	{ VVCR Hi Yield Thick 9188 (Polled)
{	{ VVCR Easy Whitehot 8730 (Polled)

Tag: 1299 **WWt:** 742
Born: 5/1/2021 **WInd:** 113
BW: 87(-1.1) EPD **18 Mo Ind:** 109

Lot 78 VVCR Distance New 1161 Polled/B

{ Distance 5200 (Polled)	{ LT Silver Distance 5342 (Polled)
{ VVCR New Thick 5527 Dam Age: 6 (Polled)	{ LT Graceful 8012
{	{ New Standard 2849 (Polled)
{	{ VVCR Thick Tundra 7778 (Polled)

Tag: 1161 **WWt:** 748
Born: 4/8/2021 **WInd:** 115
BW: 85(-0.7) EPD **18 Mo Ind:** 109

Lot 79 VVCR Power Ledger 1160 Polled

{ VVCR Power Bingo 6104 (Polled)	{ VVCR Bingo Line 2203 (Polled)
{ VVCR Ledger Payweight 9595 Dam Age: Hfr (Polled)	{ VVCR New Gridmaker 4733 (Polled)
{	{ WC Ledger 4595 (Polled)
{	{ VVCR Payweight Whitehot 2776 (Polled)

Tag: 1160 **WWt:** 719
Born: 4/8/2021 **WInd:** 110
BW: 84(-1.9) EPD **18 Mo Ind:** 108

Lot 80 VVCR Resource Value 1192 Polled

{ Resource 9022 (Polled)	{ WC Resource 417 (Polled)
{ VVCR Valued Ledger 8616 Dam Age: 3 (Polled)	{ CCC MS Blue Bud 502 (Polled)
{	{ WC Value Added 3520 (Polled)
{	{ VVCR Ledger Tradition 5596 (Polled)

Tag: 1192 **WWt:** 738
Born: 4/13/2021 **WInd:** 113
BW: 86(-0.7) EPD **18 Mo Ind:** 108

Lot 81 VVCR Free Payweight 1213 Polled

{	Free Lunch 7849	{	Free Lunch 708T
	(Polled)		(Polled)
{	VVCR Payweight Sure 1735	{	Fink Amy 0323
	Dam Age: 10 (Polled)		(Polled)
{		{	Payweight 635
			(Polled)
{		{	VVCR Sure Super 1562
			(Polled)

Tag: 1213 **WWt:** 735
Born: 4/15/2021 **WInd:** 112
BW: 89(-0.4) EPD **18 Mo Ind:** 108

Lot 82 VVCR Next Ledger 1210 Polled

{	Next Stage 5180	{	LT Stagecoach 8068
	(Polled)		(Polled)
{	VVCR Ledger Gridmaker 7577	{	LT Missy Mae 2136
	Dam Age: 4 (Polled)		(Polled)
{		{	WC Ledger 4595
			(Polled)
{		{	VVCR Gridmaker Wyoming 9738
			(Polled)

Tag: 1210 **WWt:** 737
Born: 4/14/2021 **WInd:** 113
BW: 83(-1.8) EPD **18 Mo Ind:** 108

Lot 83 VVCR Venture Ledger 1218 Polled

{	Venture 6918	{	LT Venture 3198
	(Polled)		(Polled)
{	VVCR Ledger Payweight 8532	{	JJ Brenda Ledger 3603
	Dam Age: 3 (Polled)		(Polled)
{		{	Ledger 348
			(Polled)
{		{	VVCR Payweight Wyoming 3712
			(Polled)

Tag: 1218 **WWt:** 740
Born: 4/15/2021 **WInd:** 113
BW: 86(-1.3) EPD **18 Mo Ind:** 108

Lot 84 VVCR Grid Ledger 1256 Polled

{	Gridmaker 627	{	M6 Gridmaker 104 ET
	(Polled)		(Polled)
{	VVCR Double Wyoming 4743	{	WC Blue Dutchess 9029
	Dam Age: 3 (Polled)		(Polled)
{		{	Wyoming Prime 933
			(Polled)
{		{	VVCR Wyoming Tundra 6854
			(Polled)

Tag: 1256 **WWt:** 732
Born: 4/20/2021 **WInd:** 112
BW: 87(-2.0) EPD **18 Mo Ind:** 108

Lot 85 VVCR Anchor Colts 1220 Polled

{	Anchor 6516	{	LT Rushmore 8060
	(Polled)		(Polled)
{	VVCR Colt 45 Primed 4760	{	WC Clarice 2214
	Dam Age: 7 (Polled)		(Polled)
{		{	Colt 45 249Z
			(Polled)
{		{	VVCR Primed Unlimited 1752
			(Polled)

Tag: 1220 **WWt:** 737
Born: 4/15/2021 **WInd:** 113
BW: 82(-1.2) EPD **18 Mo Ind:** 108

Lot 86 VVCR Mountain Bluegrass 1185 Polled

{	Mountain Man 9015	{	LT Rushmore 8060
	(Polled)		(Polled)
{	VVCR Blue Gridmaker 5570	{	WC Pearl 7013
	Dam Age: 6 (Polled)		(Polled)
{		{	Bluegrass 1007
			(Polled)
{		{	VVCR Gridmaker Wyoming 0784
			(Polled)

Tag: 1185 **WWt:** 736
Born: 4/12/2021 **WInd:** 113
BW: 86(-2.5) EPD **18 Mo Ind:** 108

Lot 87 VVCR Mountain Value 1314 Polled

{	Mountain Man 9015	{	LT Rushmore 8060
	(Polled)		(Polled)
{	VVCR Value Hi Yield 6559	{	WC Pearl 7013
	Dam Age: 5 (Polled)		(Polled)
{		{	Value Added 1016
			(Polled)
{		{	VVCR Hi Yield Bingo 2801
			(Polled)

Tag: 1314 **WWt:** 730
Born: 5/8/2021 **WInd:** 111
BW: 88(-3.7) EPD **18 Mo Ind:** 108

Lot 88 VVCR Sundance New 1265 Polled

{	Sundance 6137	{	LT Sundance 2251
	(Polled)		(Polled)
{	VVCR New Bingo 7648	{	LT Rhinestone 3030
	Dam Age: 4 (Polled)		(Polled)
{		{	FC New Standard 2851
			(Polled)
{		{	VVCR Bingo Wyo 1795
			(Polled)

Tag: 1265 **WWt:** 725
Born: 4/21/2021 **WInd:** 111
BW: 90(-0.2) EPD **18 Mo Ind:** 108

Lot 89 VVCR New Ledger 1291 Polled

{	New Standard 8744 (Polled)	{	M6 New Standard 842 ET (Polled)
			BHC Genie 32 016 FL (Polled)
{	VVCR Ledger Gridmaker 7651 Dam Age: 4 (Polled)	{	WC Ledger 4595 (Polled)
			VVCR Gridmaker Prime 1870 (Polled)

Tag: 1291 **WWt:** 726
Born: 4/28/2021 **WInd:** 111
BW: 88(-0.4) EPD **18 Mo Ind:** 108

Lot 90 VVCR Anchor Leading 1130 Polled

{	Anchor 6516 (Polled)	{	LT Rushmore 8060 (Polled)
			WC Clarice 2214 (Polled)
{	VVCR Leading Tundra 9860 Dam Age: 12 (Polled)	{	LT Leading Wind 7169 (Polled)
			VVCR Tundra Bingo 2584 (Polled)

Tag: 1130 **WWt:** 712
Born: 4/4/2021 **WInd:** 109
BW: 85(-1.7) EPD **18 Mo Ind:** 108

Lot 91 VVCR Free Bluegrass 1305 Polled/B

{	Free Lunch 7849 (Polled)	{	Free Lunch 708T (Polled)
			Fink Amy 0323 (Polled)
{	VVCR Bluegrass Primed 5561 Dam Age: 6 (Polled)	{	Bluegrass 1007 (Polled)
			VVCR Primed Whitehot 2822 (Polled)

Tag: 1305 **WWt:** 730
Born: 5/4/2021 **WInd:** 112
BW: 86(-1.0) EPD **18 Mo Ind:** 108

Lot 92 VVCR Power Line 1134 Polled

{	VVCR Power Bingo 6104 (Polled)	{	VVCR Bingo Line 2203 (Polled)
			VVCR New Gridmaker 4733 (Polled)
{	VVCR Bingo Stacked 9594 Dam Age: Hfr (Polled)	{	VVCR Power Bingo 6104 (Polled)
			VVCR Stacked Gridmaker 7557 (Polled)

Tag: 1134 **WWt:** 728
Born: 4/5/2021 **WInd:** 111
BW: 85(-3.3) EPD **18 Mo Ind:** 108

Lot 93 VVCR Sundance Valued 1290 Polled

{	Sundance 6137 (Polled)	{	LT Sundance 2251 (Polled)
			LT Rhinestone 3030 (Polled)
{	VVCR Valued Choice 7505 Dam Age: 4 (Polled)	{	WC Value Added 3520 (Polled)
			VVCR Choice Blue 4801 (Polled)

Tag: 1290 **WWt:** 723
Born: 4/28/2021 **WInd:** 110
BW: 87(-1.3) EPD **18 Mo Ind:** 108

Lot 94 VVCR Resource New 1171 Polled

{	Resource 9022 (Polled)	{	WC Resource 417 (Polled)
			CCC MS Blue Bud 502 (Polled)
{	VVCR New Bluegrass 8688 Dam Age: 3 (Polled)	{	FC New Standard 2849 (Polled)
			VVCR Bluegrass Blue 2830 (Polled)

Tag: 1171 **WWt:** 718
Born: 4/10/2021 **WInd:** 110
BW: 86(-1.0) EPD **18 Mo Ind:** 108

Lot 95 VVCR New Distance 1233 Polled

{	New Standard 8744 (Polled)	{	M6 New Standard 842 ET (Polled)
			BHC Genie 32 016 FL (Polled)
{	VVCRDistance Bluegrass8593 Dam Age: 3 (Polled)	{	LT Distance 5200 (Polled)
			VVCR Bluegrass Primed 5561 (Polled)

Tag: 1233 **WWt:** 727
Born: 4/17/2021 **WInd:** 111
BW: 85(-1.5) EPD **18 Mo Ind:** 108

Lot 96 VVCR Anchor Bluegrass 1216 Polled

{	Anchor 6516 (Polled)	{	LT Rushmore 8060 (Polled)
			WC Clarice 2214 (Polled)
{	VVCRBluegrassPayweight551 6 Dam Age: 6 (Polled)	{	Bluegrass 1007 (Polled)
			VVCR Payweight Mac 0839 (Polled)

Tag: 1216 **WWt:** 718
Born: 4/15/2021 **WInd:** 110
BW: 84(-1.1) EPD **18 Mo Ind:** 108

Lot 97 VVCR Resource Value 1164 Polled

{ Resource 9022 (Polled)	{ WC Resource 417 (Polled)
{ VVCR Value Tradition 8582 Dam Age: 3 (Polled)	{ CCC MS Blue Bud 502 (Polled)
{ VVCR Tradition Bingo 2708 (Polled)	{ Value Added 1016 (Polled)

Tag: 1164 **WWt:** 735
Born: 4/9/2021 **WInd:** 112
BW: 86(-0.6) EPD **18 Mo Ind:** 107

Lot 98 VVCR Venture Stacked 1170 Polled

{ Venture 6918 (Polled)	{ LT Venture 3198 (Polled)
{ VVCR Stacked Payweight 8597 Dam Age: 3 (Polled)	{ JJ Brenda Ledger 3603 (Polled)
{ VVCR Payweight Gridmaker 4788 (Polled)	{ WC Stacked Value 3566 (Polled)

Tag: 1170 **WWt:** 719
Born: 4/10/2021 **WInd:** 110
BW: 85(-1.4) EPD **18 Mo Ind:** 107

Lot 99 VVCR Rushmore Ledger 1280 Polled

{ Rushmore 8516 (Polled)	{ LT Rushmore 8060 (Polled)
{ VVCR Ledger Payweight 8547 Dam Age: 3 (Polled)	{ WC Molly 3115 (Polled)
{ VVCR Payweight Whitehot 2776 (Polled)	{ Ledger 4595 (Polled)

Tag: 1280 **WWt:** 721
Born: 4/25/2021 **WInd:** 110
BW: 87(-2.3) EPD **18 Mo Ind:** 107

Lot 100 VVCR Rushmore Wyoming 1262 Polled

{ Rushmore 8516 (Polled)	{ LT Rushmore 8060 (Polled)
{ VVCR Wyoming Thick 8576 Dam Age: 3 (Polled)	{ WC Molly 3115 (Polled)
{ VVCR Thick Unlimited 7718 (Polled)	{ LT Wind 5494 (Polled)

Tag: 1262 **WWt:** 724
Born: 4/21/2021 **WInd:** 111
BW: 86(-1.8) EPD **18 Mo Ind:** 107

Lot 101 VVCR Mountain Colts 1341 Polled

{ Mountain Man 9015 (Polled)	{ LT Rushmore 8060 (Polled)
{ VVCR Colt 45 Bingo 4753 Dam Age: 7 (Polled)	{ WC Pearl 7013 (Polled)
{ VVCR Bingo Gridmaker 1733 (Polled)	{ Colt 45 249Z (Polled)

Tag: 1341 **WWt:** 724
Born: 6/1/2023 **WInd:** 111
BW: 84(-2.6) EPD **18 Mo Ind:** 107

Lot 102 VVCR Rushmore Bingo 1248 Polled

{ Rushmore 8516 (Polled)	{ LT Rushmore 8060 (Polled)
{ VVCR Bingo Line Wind 8607 Dam Age: 3 (Polled)	{ WC Molly 3115 (Polled)
{ VVCR Windy Leading 6616 (Polled)	{ VVCR Bingo Line 2182 (Polled)

Tag: 1248 **WWt:** 721
Born: 4/19/2021 **WInd:** 110
BW: 85(-3.5) EPD **18 Mo Ind:** 107

Lot 103 VVCR Grid Windy 1245 Polled

{ Gridmaker 627 (Polled)	{ M6 Gridmaker 104 ET (Polled)
{ VVCR Windy Gridmaker 6560 Dam Age: 5 (Polled)	{ WC Blue Dutchess 9029 (Polled)
{ VVCR Gridmaker Bingo 9722 (Polled)	{ WC Windy Edge 9086 (Polled)

Tag: 1245 **WWt:** 718
Born: 4/18/2021 **WInd:** 110
BW: 87(-1.0) EPD **18 Mo Ind:** 107

Lot 104 VVCR Grid Bluegrass 1238 Polled

{ Gridmaker 627 (Polled)	{ M6 Gridmaker 104 ET (Polled)
{ VVCR Bluegrass Leading 3820 Dam Age: 8 (Polled)	{ WC Blue Dutchess 9029 (Polled)
{ VVCR Leading Unlimited 0758 (Polled)	{ Bluegrass 0353 (Polled)

Tag: 1238 **WWt:** 715
Born: 4/17/2021 **WInd:** 109
BW: 86(-0.9) EPD **18 Mo Ind:** 107

Lot 105 VVCR Next Wyoming 1112 Polled

{	Next Stage 5180	{	LT Stagecoach 8068
	(Polled)		(Polled)
{	VVCR Wind Sure 0802	{	LT Missy Mae 2136
	Dam Age: 11 (Polled)		(Polled)
{		{	Wyoming Wind S837
			(Polled)
{		{	VVCR Sure Tundra 5835
			(Polled)

Tag: 1112 **WWt:** 712
Born: 4/2/2023 **WInd:** 109
BW: 85(-1.7) EPD **18 Mo Ind:** 107

Lot 106 VVCR Distance Value 1104 Polled

{	Distance 5200	{	LT Silver Distance 5342
	(Polled)		(Polled)
{	VVCR Value Blue 5514	{	LT Graceful 8012
	Dam Age: 6 (Polled)		
{		{	Value Added 1016
			(Polled)
{		{	VVCR Blue Hi Yield 1789
			(Polled)

Tag: 1104 **WWt:** 710
Born: 4/1/2023 **WInd:** 109
BW: 82(-2.7) EPD **18 Mo Ind:** 107

Lot 107 VVCR Anchor Payweight 1156 Polled

{	Anchor 6516	{	LT Rushmore 8060
	(Polled)		(Polled)
{	VVCR Payweight Mac 0839	{	WC Clarice 2214
	Dam Age: 11 (Polled)		(Polled)
{		{	WF Payweight Mac 635
			(Polled)
{		{	VVCR Mac Blastoff AIG 6525
			(Polled)

Tag: 1156 **WWt:** 725
Born: 4/8/2021 **WInd:** 111
BW: 86(-2.4) EPD **18 Mo Ind:** 107

Lot 108 VVCR Free Value 1126 Polled

{	Free Lunch FC 5652	{	Free Lunch 708T
	(Polled)		(Polled)
{	VVCR Valued Whitehot 8599	{	Fink Megan 7750
	Dam Age: 3 (Polled)		(Polled)
{		{	LT Value Added 1016
			(Polled)
{		{	VVCR Whitehot SureWyo 8873
			(Polled)

Tag: 1126 **WWt:** 698
Born: 4/3/2021 **WInd:** 107
BW: 87(-0.6) EPD **18 Mo Ind:** 107

Lot 109 VVCR Rushmore Valued 1174 Polled

{	Rushmore 8516	{	LT Rushmore 8060
	(Polled)		(Polled)
{	VVCR Valued Wyoming 8555	{	WC Molly 3115
	Dam Age: 3 (Polled)		(Polled)
{		{	WC Value Added 3520
			(Polled)
{		{	VVCR Value Wyoming 4764
			(Polled)

Tag: 1174 **WWt:** 695
Born: 4/11/2021 **WInd:** 106
BW: 85(-1.6) EPD **18 Mo Ind:** 107

Lot 110 VVCR Free Gridmaker 1310 Polled

{	Free Lunch 7849	{	Free Lunch 708T
	(Polled)		(Polled)
{	VVCR Gridmaker Pay 6539	{	Fink Amy 0323
	Dam Age: 5 (Polled)		(Polled)
{		{	Gridmaker 2871
			(Polled)
{		{	VVCR Payweight Bingo 1730
			(Polled)

Tag: 1310 **WWt:** 695
Born: 5/6/2021 **WInd:** 106
BW: 85(-1.6) EPD **18 Mo Ind:** 107

Lot 111 VVCR Power Ledger 1187 Polled

{	VVCR Power Bingo 6104	{	VVCR Bingo Line 2203
	(Polled)		(Polled)
{	VVCR Ledger Wind 9555	{	VVCR New Gridmaker 4733
	Dam Age: Hfr (Polled)		(Polled)
{		{	LT Ledger 4595
			(Polled)
{		{	VVCR Windy Whitehot 4863
			(Polled)

Tag: 1187 **WWt:** 690
Born: 4/12/2021 **WInd:** 105
BW: 82(-2.3) EPD **18 Mo Ind:** 107

Lot 112 VVCR Sundance Valued 1202 Polled

{	Sundance 6137	{	LT Sundance 2251
	(Polled)		(Polled)
{	VVCR Valued Payweight 7507	{	LT Rhinestone 3030
	Dam Age: 4 (Polled)		(Polled)
{		{	LT Value Added 1016
			(Polled)
{		{	VVCR Payweight Bingo 8706
			(Polled)

Tag: 1202 **WWt:** 722
Born: 4/13/2021 **WInd:** 110
BW: 88(-2.0) EPD **18 Mo Ind:** 106

Lot 113 VVCR Free Colt 45 1114 Polled

{	Free Lunch FC 5652 (Polled)	{	Free Lunch 708T (Polled)
	VVCR Colt 45 New 8591 Dam Age: 3 (Polled)		Fink Megan 7750 (Polled)
		{	WC Colt 45 249Z (Polled)
			VVCR New Tradition 4716 (Polled)

Tag:	1114	WWt:	694
Born:	4/2/2023	WInd:	106
BW:	86(-2.0) EPD	18 Mo Ind:	106

Lot 114 VVCR Rushmore Ledger 1239 Polled

{	Rushmore 8516 (Polled)	{	LT Rushmore 8060 (Polled)
	VVCR Ledger Primed 8658 Dam Age: 3 (Polled)		WC Molly 3115 (Polled)
		{	LT Ledger 4595 (Polled)
			VVCR Primed Gridmaker 2702 (Polled)

Tag:	1239	WWt:	697
Born:	4/18/2021	WInd:	106
BW:	87(-2.2) EPD	18 Mo Ind:	106

Lot 115 VVCR Anchor Bingo 1231 Polled

{	Anchor 6516 (Polled)	{	LT Rushmore 8060 (Polled)
	VVCR Bingo Blue 4744 Dam Age: 7 (Polled)		WC Clarice 2214 (Polled)
		{	VVCR Bingo Line 2203 (Polled)
			VVCR Blue Primed 2793 (Polled)

Tag:	1231	WWt:	705
Born:	4/16/2021	WInd:	109
BW:	82(-2.8) EPD	18 Mo Ind:	106

Lot 116 VVCR Resource Ledger 1118 Polled

{	Resource 9022 (Polled)	{	WC Resource 417 (Polled)
	VVCR Ledger Primed 8641 Dam Age: 3 (Polled)		CCC MS Blue Bud 502 (Polled)
		{	WC Ledger 4595 (Polled)
			VVCR Primed Tradition 9747 (Polled)

Tag:	1118	WWt:	696
Born:	4/3/2023	WInd:	106
BW:	79(-1.6) EPD	18 Mo Ind:	106

Lot 117 VVCR Rushmore Free 1139 Polled

{	Rushmore 8516 (Polled)	{	LT Rushmore 8060 (Polled)
	VVCR Free Tradition 8503 Dam Age: 3 (Polled)		WC Molly 3115 (Polled)
		{	Free Lunch FC 4208 (Polled)
			VVCR Tradition Whitehot 2748 (Polled)

Tag:	1139	WWt:	695
Born:	4/6/2021	WInd:	106
BW:	87(-3.4) EPD	18 Mo Ind:	106

Lot 118 VVCR Power Gridmaker 1154 Polled

{	VVCR Power Bingo 6104 (Polled)	{	VVCR Bingo Line 2203 (Polled)
	VVCR Gridmaker Wyo 9514 Dam Age: Hfr (Polled)		VVCR New Gridmaker 4733 (Polled)
		{	FC Gridmaker 2871 (Polled)
			VVCR Wyoming Mac 5723 (Polled)

Tag:	1154	WWt:	688
Born:	4/8/2021	WInd:	106
BW:	80(-2.0) EPD	18 Mo Ind:	106

Lot 119 VVCR Standard Value 1121 Polled

{	New Standard 8744 (Polled)	{	M6 New Standard 842 ET (Polled)
	VVCR Valued Gridmaker 7526 Dam Age: 4 (Polled)		BHC Genie 32 016 FL (Polled)
		{	WC Value Added 3520 (Polled)
			VVCR Gridmaker Line 4720 (Polled)

Tag:	1121	WWt:	693
Born:	4/3/2021	WInd:	106
BW:	85(-1.2) EPD	18 Mo Ind:	106

Lot 120 VVCR Gridmaker Wyoming 1188 Polled

{	Gridmaker 627 (Polled)	{	M6 Gridmaker 104 ET (Polled)
	VVCR Wyoming Prime 5531 Dam Age: 6 (Polled)		WC Blue Dutchess 9029 (Polled)
		{	Wyoming Prime 933 (Polled)
			VVCR Primed Wyoming 7719 (Polled)

Tag:	1188	WWt:	692
Born:	4/12/2021	WInd:	106
BW:	86(-1.5) EPD	18 Mo Ind:	106

Lot 121 VVCR Grid Valued 1332 Polled

{	Gridmaker 627	{	M6 Gridmaker 104 ET
	(Polled)		(Polled)
{	VVCR Valued Wind 7660	{	WC Blue Dutchess 9029
	Dam Age: 4 (Polled)		(Polled)
{		{	WC Value Added 3520
			(Polled)
{		{	VVCR Windy Whitehot 4863
			(Polled)

Tag: 1332 **WWt:** 690
Born: 5/24/2023 **WInd:** 105
BW: 87(-0.4) EPD **18 Mo Ind:** 106

Lot 122 VVCR Gridmaker New 1260 Polled

{	Gridmaker 627	{	M6 Gridmaker 104 ET
	(Polled)		(Polled)
{	VVCR New Gridmaker 4733 Dam Age: 7 (Polled)	{	WC Blue Dutchess 9029
			(Polled)
		{	New Standard 107
			(Polled)
{	VVCR Gridmaker Wyoming 9751		
		(Polled)	

Tag: 1260 **WWt:** 702
Born: 4/20/2021 **WInd:** 107
BW: 88(-2.0) EPD **18 Mo Ind:** 106

Lot 123 VVCR Ledger Leading 1325 Polled

{	Ledger 348 (Polled)	{	LT Ledger 0332
			(Polled)
{	VVCR Leading Primed 2790 Dam Age: 9 (Polled)	{	LT Stylish Wind 651
			(Polled)
{		{	LT Leading Wind 7169
			(Polled)
{		{	VVCR Primed Wyo 9734
			(Polled)

Tag: 1325 **WWt:** 685
Born: 5/13/2021 **WInd:** 105
BW: 86(-1.9) EPD **18 Mo Ind:** 106

Lot 124 VVCR New Bingo 1149 Polled

{	New Standard 8744	{	M6 New Standard 842 ET
	(Polled)		(Polled)
{	VVCR Bingo Blue 7627	{	BHC Genie 32 016 FL
	Dam Age: 4 (Polled)		(Polled)
{		{	VVCR Bingo Line 2203
			(Polled)
{		{	VVCR Bluegrass Primed 5664
			(Polled)

Tag: 1149 **WWt:** 696
Born: 4/7/2021 **WInd:** 106
BW: 85(-2.1) EPD **18 Mo Ind:** 106

Lot 125 VVCR Power Anchor 1326 Polled

{	VVCR Power Bingo 6104 (Polled)	{	VVCR Bingo Line 2203 (Polled)
			VVCR New Gridmaker 4733 (Polled)
{	VVCR Anchor Gridmaker 9529	{	WC GH Anchor 6516 (Polled)
	Dam Age: Hfr (Polled)		VVCR Gridmaker Wyoming 5606 (Polled)

Tag: 1326 **WWt:** 680
Born: 5/15/2021 **WInd:** 104
BW: 77(-1.9) EPD **18 Mo Ind:** 106

Lot 126 VVCR Ledger Payweight 1269 Polled

{	Ledger 348	{	LT Ledger 0332
	(Polled)		(Polled)
{	VVCR Payweight Bingo 1730 Dam Age: 9 (Polled)	{	LT Stylish Wind 651
			(Polled)
		{	Payweight 635
			(Polled)
{	VVCR Bingo Wyoming 5766		
		(Polled)	

Tag: 1269 **WWt:** 702
Born: 4/22/2021 **WInd:** 107
BW: 85(-2.4) EPD **18 Mo Ind:** 105

Lot 127 VVCR Free Bingo 1289 Polled

{	Free Lunch 7849	{	Free Lunch 708T
	(Polled)		(Polled)
{	VVCR Bingo Leading 3740	{	Fink Amy 0323
	Dam Age: 8 (Polled)		(Polled)
{		{	VVCR Tradition Bingo 3205
			(Polled)
{		{	VVCR Gridmaker Mac 8806
			(Polled)

Tag: 1289 **WWt:** 704
Born: 4/28/2021 **WInd:** 107
BW: 87(-2.1) EPD **18 Mo Ind:** 105

Lot 128 VVCR Mountain Bluegrass 1169 Polled

{	Mountain Man 9015	{	LT Rushmore 8060
	(Polled)		(Polled)
{	VVCRBluegrassPayweght5629 Dam Age: 6 (Polled)	{	WC Pearl 7013
			(Polled)
		{	Bluegrass 1007
			(Polled)
{	VVCR Payweight Bingo 8710		
		(Polled)	

Tag: 1169 **WWt:** 687
Born: 4/10/2021 **WInd:** 105
BW: 85(-1.2) EPD **18 Mo Ind:** 105

Lot 129 VVCR Free Value 1177 Polled

{	Free Lunch 7849 (Polled)	{	Free Lunch 708T (Polled)
	VVCR Value Tradition 6591 Dam Age: 5 (Polled)		Fink Amy 0323 (Polled)
		{	WC Value Added 3520 (Polled)
			VVCR Tradition Wyo 1777 (Polled)

Tag: 1177 **WWt:** 685
Born: 4/11/2021 **WInd:** 105
BW: 90(-1.1) EPD **18 Mo Ind:** 105

Lot 130 VVCR Power Ledger 1103 Polled

{	VVCR Power Bingo 6104 (Polled)	{	VVCR Bingo Line 2203 (Polled)
	VVCR Ledger Bingo 9582 Dam Age:Hfr (Polled)		VVCR New Gridmaker 4733 (Polled)
		{	M6 Gridmaker 627 (Polled)
			VVCR Bingo Wyoming 8758 (Polled)

Tag: 1103 **WWt:** 680
Born: 4/1/2023 **WInd:** 104
BW: 80(-2.7) EPD **18 Mo Ind:** 105

Lot 131 VVCR Free Value Grid 1111 Polled

{	Free Lunch FC 5652 (Polled)	{	Free Lunch 708T (Polled)
	VVCR Free Gridmaker 7524 Dam Age: 4 (Polled)		Fink Megan 7750 (Polled)
		{	Free Lunch FC 4208 (Polled)
			VVCR Gridmaker Bingo 4810 (Polled)

Tag: 1111 **WWt:** 692
Born: 4/2/2023 **WInd:** 106
BW: 86(-1.1) EPD **18 Mo Ind:** 105

Lot 132 VVCR Rushmore Ledger 1199 Polled

{	Rushmore 8516 (Polled)	{	LT Rushmore 8060 (Polled)
	VVCR Ledger Primed 8653 Dam Age: 3 (Polled)		WC Molly 3115 (Polled)
		{	WC Ledger 4595 (Polled)
			VVCR Primed Tradition 8799 (Polled)

Tag: 1199 **WWt:** 687
Born: 4/13/2021 **WInd:** 105
BW: 84(-2.6) EPD **18 Mo Ind:** 105

Lot 133 VVCR Resource Value 1244 Polled

{	Resource 9022 (Polled)	{	WC Resource 417 (Polled)
	VVCR Valued Tradition 7633 Dam Age: 4 (Polled)		CCC MS Blue Bud 502 (Polled)
		{	LT Value Added (Polled)
			VVCR Tradition Wyo 1825 (Polled)

Tag: 1244 **WWt:** 685
Born: 4/18/2021 **WInd:** 105
BW: 84(-1.4) EPD **18 Mo Ind:** 105

Lot 134 VVCR Distance Prime 1327 Polled

{	Distance 5200 (Polled)	{	LT Silver Distance 5342 (Polled)
	VVCR Prime Line 4731 Dam Age: 7 (Polled)		LT Graceful 8012 (Polled)
		{	LT Prime Wind 940 (Polled)
			VVCR Primed Tradition 9747 (Polled)

Tag: 1327 **WWt:** 683
Born: 5/18/2021 **WInd:** 104
BW: 87(-2.7) EPD **18 Mo Ind:** 105

Lot 135 VVCR Ledger Easy 1215 Polled

{	Ledger 348 (Polled)	{	LT Ledger 0332 (Polled)
	VVCR Easy Whitehot 9854 Dam Age: 12 (Polled)		LT Stylish Wind 651 (Polled)
		{	LT Easy Edge 646 (Polled)
			VVCR Whitehot Mac 5783 (Polled)

Tag: 1215 **WWt:** 684
Born: 4/15/2021 **WInd:** 104
BW: 84(-0.7) EPD **18 Mo Ind:** 105

Lot 136 VVCR Venture Free 1276 Polled

{	Venture 6918 (Polled)	{	LT Venture 3198 (Polled)
	VVCR Free Prime 8542 Dam Age: 3 (Polled)		JJ Brenda Ledger 3603 (Polled)
		{	Free Lunch FC 4208 (Polled)
			VVCR Prime Unlimited 5708 (Polled)

Tag: 1276 **WWt:** 685
Born: 4/24/2021 **WInd:** 105
BW: 83(-1.4) EPD **18 Mo Ind:** 105

Lot 137 VVCR Free Value 1145 Polled

{	Free Lunch FC 5652 (Polled)	{	Free Lunch 708T (Polled)
			Fink Megan 7750 (Polled)
{	VVCRStacked Gridmaker8545 Dam Age: 3 (Polled)	{	WC Stacked Value 3566 (Polled)
			VVCR Gridmaker Payweight 4811 (Polled)

Tag: 1145 **WWt:** 687
Born: 4/7/2021 **WInd:** 105
BW: 85(-2.4) EPD **18 Mo Ind:** 105

Lot 138 VVCR Resource Bingo 1191 Polled

{	Resource 9022 (Polled)	{	WC Resource 417 (Polled)
			CCC MS Blue Bud 502 (Polled)
{	VVCR Bingo Gridmaker 8609 Dam Age: 3 (Polled)	{	VVCR Bingo Line 2182 (Polled)
			VVCR Gridmaker Prime 6624 (Polled)

Tag: 1191 **WWt:** 684
Born: 4/13/2021 **WInd:** 104
BW: 85(-1.7) EPD **18 Mo Ind:** 105

Lot 139 VVCR Next Gridmaker 1323 Polled

{	Next Stage 5180 (Polled)	{	LT Stagecoach 8068 (Polled)
			LT Missy Mae 2136 (Polled)
{	VVCR Gridmaker Ultra 9773 Dam Age: 12 (Polled)	{	Gridmaker 4110 (Polled)
			VVCR Ultra Bingo 4186 (Polled)

Tag: 1323 **WWt:** 684
Born: 5/11/2021 **WInd:** 104
BW: 86(12/28/1899) EPD **18 Mo Ind:** 105

Lot 140 VVCR Free Ledger 1124 Polled

{	Free Lunch 7849 (Polled)	{	Free Lunch 708T (Polled)
			Fink Amy 0323 (Polled)
{	VVCR Ledger Tradition 6647 Dam Age: 5 (Polled)	{	LT Ledger 348 (Polled)
			VVCR Tradition Gridmaker 9795 (Polled)

Tag: 1124 **WWt:** 683
Born: 4/3/2021 **WInd:** 104
BW: 86(-1.2) EPD **18 Mo Ind:** 105

Lot 141 VVCR Ledger Payweight 1296 Polled

{	Ledger 7404 (Polled)	{	LT Ledger 0332 (Polled)
			LT Brenda 3307 (Polled)
{	VVCR Payweight Prime 0853 Dam Age: 11 (Polled)	{	Payweight 635 (Polled)
			VVCR Prime Unlimited 5778 (Polled)

Tag: 1296 **WWt:** 693
Born: 4/29/2021 **WInd:** 106
BW: 87(-0.8) EPD **18 Mo Ind:** 105

Lot 142 VVCR Venture Bingo 1339 Polled

{	Venture 6918 (Polled)	{	LT Venture 3198 (Polled)
			JJ Brenda Ledger 3603 (Polled)
{	VVCR Double Bingo 8698 Dam Age: 3 (Polled)	{	VVCR Bingo Leader 4160 (Polled)
			VVCR Bingo Line Colt 45 6557 (Polled)

Tag: 1339 **WWt:** 690
Born: 5/31/2023 **WInd:** 105
BW: 86(-2.9) EPD **18 Mo Ind:** 104

Lot 143 VVCR Anchor Gridmaker 1285 Polled

{	Anchor 6516 (Polled)	{	LT Rushmore 8060 (Polled)
			WC Clarice 2214 (Polled)
{	VVCR Gridmaker Bingo 9722 Dam Age: 12 (Polled)	{	Gridmaker 447 (Polled)
			VVCR Bingo Wyoming 1640 (Polled)

Tag: 1285 **WWt:** 687
Born: 4/25/2021 **WInd:** 105
BW: 84(-0.8) EPD **18 Mo Ind:** 104

Lot 144 VVCR Free Gridmaker 1313 Polled

{	Free Lunch FC 5652 (Polled)	{	Free Lunch 708T (Polled)
			Fink Megan 7750 (Polled)
{	VVCR Gridmaker Bingo 3716 Dam Age: 8 (Polled)	{	Gridmaker 9890 (Polled)
			VVCR Bingo Unlimited 7770 (Polled)

Tag: 1313 **WWt:** 688
Born: 5/8/2021 **WInd:** 105
BW: 87(-1.3) EPD **18 Mo Ind:** 104

Lot 145 VVCR Mountain Primed 1333 Polled

{	Mountain Man 9015 (Polled)	{	LT Rushmore 8060 (Polled)
			WC Pearl 7013 (Polled)
{	VVCR Primed Whitehot 7774 Dam Age: 14 (Polled)	{	Primed 3288 (Polled)
			VVCR Whitehot Tundra 3555 (Polled)

Tag: 1333 **WWt:** 686
Born: 5/25/2023 **WInd:** 105
BW: 82(-2.1) EPD **18 Mo Ind:** 104

Lot 146 VVCR Free Value 1110 Polled

{	Free Lunch FC 5652 (Polled)	{	Free Lunch 708T (Polled)
			Fink Megan 7750 (Polled)
{	VVCR Value Gridmaker 6544 Dam Age: 5 (Polled)	{	WC Value Added 3520 (Polled)
			VVCR Gridmaker Bingo 0772 (Polled)

Tag: 1110 **WWt:** 685
Born: 4/2/2023 **WInd:** 105
BW: 86(-0.2) EPD **18 Mo Ind:** 104

Lot 147 VVCR Venture Windy 1301 Polled

{	Venture 6918 (Polled)	{	LT Venture 3198 (Polled)
			JJ Brenda Ledger 3603 (Polled)
{	VVCR Windy Edge 8661 Dam Age: 3 (Polled)	{	LT Wind 5494 (Polled)
			VVCR Windy Edge Tradition 3776 (Polled)

Tag: 1301 **WWt:** 684
Born: 5/2/2021 **WInd:** 104
BW: 85(-1.4) EPD **18 Mo Ind:** 104

Lot 148 VVCR Anchor Leading 1147 Polled

{	Anchor 6516 (Polled)	{	LT Rushmore 8060 (Polled)
			WC Clarice 2214 (Polled)
{	VVCR Leading Primed 1767 Dam Age: 10 (Polled)	{	LT Leading Wind 7169 (Polled)
			VVCR Primed Whitehot 8796 (Polled)

Tag: 1147 **WWt:** 680
Born: 4/7/2021 **WInd:** 104
BW: 86(12/28/1899) EPD **18 Mo Ind:** 104

Lot 149 VVCR Distance Value 1283 Polled

{	Distance 5200 (Polled)	{	LT Silver Distance 5342 (Polled)
			LT Graceful 8012
{	VVCR Value Wyoming 4764 Dam Age: 7 (Polled)	{	Value Added 1016 (Polled)
			VVCR Wyoming Unlimited 5728 (Polled)

Tag: 1283 **WWt:** 685
Born: 4/25/2021 **WInd:** 105
BW: 84(-0.9) EPD **18 Mo Ind:** 104

Lot 150 VVCR Anchor Gridmaker 1226 Polled

{	Anchor 6516 (Polled)	{	LT Rushmore 8060 (Polled)
			WC Clarice 2214 (Polled)
{	VVCR Gridmaker Primed 5546 Dam Age: 6 (Polled)	{	Gridmaker 2871 (Polled)
			VVCR Primed Bingo 0762 (Polled)

Tag: 1226 **WWt:** 682
Born: 4/16/2021 **WInd:** 104
BW: 85(-2.8) EPD **18 Mo Ind:** 104

Lot 151 VVCR Gridmaker New 1167 Polled

{	Gridmaker 627 (Polled)	{	M6 Gridmaker 104 ET (Polled)
			WC Blue Dutchess 9029 (Polled)
{	VVCR New Primed 4861 Dam Age: 7 (Polled)	{	New Standard 107 (Polled)
			VVCR Primed Whitehot 8796 (Polled)

Tag: 1167 **WWt:** 684
Born: 4/10/2021 **WInd:** 104
BW: 86(-1.4) EPD **18 Mo Ind:** 104

Lot 152 VVCR Rushmore Sundance 1303 Polled

{	Rushmore 8516 (Polled)	{	LT Rushmore 8060 (Polled)
			WC Molly 3115 (Polled)
{	VVCR Sundance Prime 8654 Dam Age: 3 (Polled)	{	LT Sundance 6137 (Polled)
			VVCR Double Prime 3799 (Polled)

Tag: 1303 **WWt:** 679
Born: 5/3/2021 **WInd:** 104
BW: 85(-2.7) EPD **18 Mo Ind:** 104

Lot 153 VVCR Sundance Bingo 1219 Polled

{ Sundance 6137 (Polled)	{ LT Sundance 2251 (Polled)
{ VVCR Bingo Prime 7475 Dam Age: 4 (Polled)	{ LT Rhinestone 3030 (Polled)
{ VVCR Bingo Prime 7475 Dam Age: 4 (Polled)	{ VVCR Bingo Line 2182 (Polled)
{ VVCR Bingo Prime 7475 Dam Age: 4 (Polled)	{ VVCR Primed Gridmaker 5563 (Polled)

Tag: 1219 **WWt:** 683
Born: 4/15/2021 **WInd:** 104
BW: 87(-1.4) EPD **18 Mo Ind:** 104

Lot 154 VVCR Resource Value 1292 Polled

{ Resource 9022 (Polled)	{ WC Resource 417 (Polled)
{ VVCR Double Value 8632 Dam Age: 3 (Polled)	{ CCC MS Blue Bud 502 (Polled)
{ VVCR Double Value 8632 Dam Age: 3 (Polled)	{ WC Value Added 3520 (Polled)
{ VVCR Double Value 8632 Dam Age: 3 (Polled)	{ VVCR Value Tradition 4745 (Polled)

Tag: 1292 **WWt:** 682
Born: 4/28/2021 **WInd:** 104
BW: 87(-1.5) EPD **18 Mo Ind:** 104

Lot 155 VVCR Next Bluegrass 1246 Polled

{ Next Stage 5180 (Polled)	{ LT Stagecoach 8068 (Polled)
{ VVCRBluegrassPaywewght4725 Dam Age: 7 (Polled)	{ LT Missy Mae 2136 (Polled)
{ VVCRBluegrassPaywewght4725 Dam Age: 7 (Polled)	{ WC Bluegrass 2191 (Polled)
{ VVCRBluegrassPaywewght4725 Dam Age: 7 (Polled)	{ VVCR Payweight Wyo 1800 (Polled)

Tag: 1246 **WWt:** 685
Born: 4/18/2021 **WInd:** 105
BW: 85(-0.2) EPD **18 Mo Ind:** 103

Lot 156 VVCR Distance Primed 1183 Polled

{ Distance 5200 (Polled)	{ LT Silver Distance 5342 (Polled)
{ VVCR Prime Wind 3792 Dam Age: 8 (Polled)	{ LT Graceful 8012
{ VVCR Prime Wind 3792 Dam Age: 8 (Polled)	{ LT Primed 3288 (Polled)
{ VVCR Prime Wind 3792 Dam Age: 8 (Polled)	{ VVCR Wyoming Line 0812 (Polled)

Tag: 1183 **WWt:** 684
Born: 4/12/2021 **WInd:** 104
BW: 86(-1.3) EPD **18 Mo Ind:** 103

Lot 157 VVCR Distance Bingo 1281 Polled

{ Distance 5200 (Polled)	{ LT Silver Distance 5342 (Polled)
{ VVCR Bingo Wyoming 8758 Dam Age: 13 (Polled)	{ LT Graceful 8012
{ VVCR Bingo Wyoming 8758 Dam Age: 13 (Polled)	{ VVCR Bingo Line 1148 (Polled)
{ VVCR Bingo Wyoming 8758 Dam Age: 13 (Polled)	{ VVCR Wyoming Line 6703 (Polled)

Tag: 1281 **WWt:** 677
Born: 4/25/2021 **WInd:** 103
BW: 84(-3.2) EPD **18 Mo Ind:** 103

Lot 158 VVCR Gridmaker Long 1251 Polled

{ Gridmaker 627 (Polled)	{ M6 Gridmaker 104 ET (Polled)
{ VVCR Long Prime 6629 Dam Age: 5 (Polled)	{ WC Blue Dutchess 9029 (Polled)
{ VVCR Long Prime 6629 Dam Age: 5 (Polled)	{ Long Choice 2069 (Polled)
{ VVCR Long Prime 6629 Dam Age: 5 (Polled)	{ VVCR Prime Bingo 5756 (Polled)

Tag: 1251 **WWt:** 681
Born: 4/19/2021 **WInd:** 104
BW: 86(-1.1) EPD **18 Mo Ind:** 103

Lot 159 VVCR Ledger Value 1267 Polled

{ Ledger 348 (Polled)	{ LT Ledger 0332 (Polled)
{ VVCR Value Payweight 5551 Dam Age: 6 (Polled)	{ LT Stylish Wind 651 (Polled)
{ VVCR Value Payweight 5551 Dam Age: 6 (Polled)	{ Value Added 1016 (Polled)
{ VVCR Value Payweight 5551 Dam Age: 6 (Polled)	{ VVCR Payweight Wyo 1723 (Polled)

Tag: 1267 **WWt:** 679
Born: 4/21/2021 **WInd:** 104
BW: 87(-0.9) EPD **18 Mo Ind:** 103

Lot 160 VVCR New Line 1230 Polled

{ New Standard 8744 (Polled)	{ M6 New Standard 842 ET (Polled)
{ VVCR New Whitehot 7509 Dam Age: 4 (Polled)	{ BHC Genie 32 016 FL (Polled)
{ VVCR New Whitehot 7509 Dam Age: 4 (Polled)	{ FC New Standard 2849 (Polled)
{ VVCR New Whitehot 7509 Dam Age: 4 (Polled)	{ VVCR Whitehot Bingo 5765 (Polled)

Tag: 1230 **WWt:** 678
Born: 4/16/2021 **WInd:** 103
BW: 84(-2.1) EPD **18 Mo Ind:** 103

Lot 161 VVCR Free Lunch Blue 1196 Polled

{	Free Lunch FC 5652 (Polled)	{	Free Lunch 708T (Polled)
	VVCR Blue Grid 0731 Dam Age: 11 (Polled)		Fink Megan 7750 (Polled)
		{	LT Blue Ranger 6093 (Polled)
			VVCR Gridmaker Whitehot 7784 (Polled)

Tag: 1196 **WWt:** 677
Born: 4/13/2021 **WInd:** 103
BW: 88(-2.3) EPD **18 Mo Ind:** 103

Lot 162 VVCR Mountain Wyoming 1259 Polled

{	Mountain Man 9015 (Polled)	{	LT Rushmore 8060 (Polled)
	VVCR Wyoming UMac 7748 Dam Age: 14 (Polled)		WC Pearl 7013 (Polled)
		{	Wyoming Wind 22K (Polled)
			VVCR UMac Super 8539 (Polled)

Tag: 1259 **WWt:** 674
Born: 4/20/2021 **WInd:** 103
BW: 86(-3.2) EPD **18 Mo Ind:** 103

Lot 163 VVCR Power Gridmaker 1102 Polled

{	VVCR Power Bingo 6104 (Polled)	{	VVCR Bingo Line 2203 (Polled)
	VVCR Double Gridmaker 9523 Dam Age: Hfr (Polled)		VVCR New Gridmaker 4733 (Polled)
		{	M6 Gridmaker 627 (Polled)
			VVCR Gridmaker Primed 4773 (Polled)

Tag: 1102 **WWt:** 670
Born: 4/1/2023 **WInd:** 103
BW: 83(-3.1) EPD **18 Mo Ind:** 103

Lot 164 VVCR Ledger Bingo 1241 Polled

{	Ledger 7404 (Polled)	{	LT Ledger 0332 (Polled)
	VVCR Bingo Unlimited 7770 Dam Age: 14 (Polled)		LT Brenda 3307 (Polled)
		{	VVCR Bingo Line 1148 (Polled)
			VVCR Unlimited Bingo 5724 (Polled)

Tag: 1241 **WWt:** 676
Born: 4/18/2021 **WInd:** 103
BW: 85(-1.5) EPD **18 Mo Ind:** 103

Lot 165 VVCR Ledger Value 1317 Polled

{	Ledger 7404 (Polled)	{	LT Ledger 0332 (Polled)
	VVCR Value Blue Grid 6660 Dam Age: 5 (Polled)		LT Brenda 3307 (Polled)
		{	Value Added 1016 (Polled)
			VVCR Blue Gridmaker 2781 (Polled)

Tag: 1317 **WWt:** 678
Born: 5/9/2021 **WInd:** 103
BW: 86(-1.2) EPD **18 Mo Ind:** 103

Lot 166 VVCR Distance Valued 1148 Polled

{	Distance 5200 (Polled)	{	LT Silver Distance 5342 (Polled)
	VVCR Value Gridmaker 6514 Dam Age: 5 (Polled)		LT Graceful 8012
		{	Value Added 1016 (Polled)
			VVCR Gridmaker Sure 2779 (Polled)

Tag: 1148 **WWt:** 677
Born: 4/7/2021 **WInd:** 103
BW: 86(-2.7) EPD **18 Mo Ind:** 103

Lot 167 VVCR Venture Ledger 1270 Polled

{	Venture 6918 (Polled)	{	LT Venture 3198 (Polled)
	VVCR Ledger Bingo 8625 Dam Age: 3 (Polled)		JJ Brenda Ledger 3603 (Polled)
		{	LT Ledger 348 (Polled)
			VVCR Bingo Gridmaker 1733 (Polled)

Tag: 1270 **WWt:** 675
Born: 4/23/2021 **WInd:** 103
BW: 87(-2.2) EPD **18 Mo Ind:** 103

Lot 168 VVCR Anchor Windy 1255 Polled

{	Anchor 6516 (Polled)	{	LT Rushmore 8060 (Polled)
	VVCR Windy Whitehot 4863 Dam Age: 7 (Polled)		WC Clarice 2214 (Polled)
		{	WC Windy Edge 9086 (Polled)
			VVCR Whitehot Wyoming 8875 (Polled)

Tag: 1255 **WWt:** 679
Born: 4/20/2021 **WInd:** 104
BW: 87(-1.8) EPD **18 Mo Ind:** 102

Lot 169 VVCR Free Bluegrass 1274 Polled

{	Free Lunch FC 5652 (Polled)	{	Free Lunch 708T (Polled)
			Fink Megan 7750 (Polled)
{	VVCR Bluegrass Unlmt 4839 Dam Age: 7 (Polled)	{	WC Bluegrass 2191 (Polled)
			VVCR Bingo Wyoming 1706 (Polled)

Tag: 1274 **WWt:** 676
Born: 4/23/2021 **WInd:** 103
BW: 88(-1.2) EPD **18 Mo Ind:** 102

Lot 170 VVCR Ledger Wyoming 1344 Polled

{	Ledger 7404 (Polled)	{	LT Ledger 0332 (Polled)
			LT Brenda 3307 (Polled)
{	VVCR Wyoming Chaps 9775 Dam Age: 11 (Polled)	{	Wyoming Wind 22K (Polled)
			VVCR Chaps Kruger 0551 (Polled)

Tag: 1344 **WWt:** 674
Born: 6/2/2023 **WInd:** 103
BW: 86(-1.2) EPD **18 Mo Ind:** 102

Lot 171 VVCR Distance Bingo 1113 Polled

{	Distance 5200 (Polled)	{	LT Silver Distance 5342 (Polled)
			LT Graceful 8012
{	VVCR Bingo Gridmaker 6627 Dam Age: 5 (Polled)	{	VVCR Bingo Line 2182 (Polled)
			VVCR Gridmaker Bingo 4792 (Polled)

Tag: 1113 **WWt:** 678
Born: 4/2/2023 **WInd:** 104
BW: 87(-2.3) EPD **18 Mo Ind:** 102

Lot 172 VVCR Standard Ledger 1136 Polled

{	New Standard 8744 (Polled)	{	M6 New Standard 842 ET (Polled)
			BHC Genie 32 016 FL (Polled)
{	VVCR Ledger Easy 7558 Dam Age: 4 (Polled)	{	WC Stacked Value 3566 (Polled)
			VVCR Easy Whitehot 9854 (Polled)

Tag: 1136 **WWt:** 675
Born: 4/5/2021 **WInd:** 103
BW: 86(-1.0) EPD **18 Mo Ind:** 102

Lot 173 VVCR Ledger Wyoming 1298 Polled

{	Ledger 7404 (Polled)	{	LT Ledger 0332 (Polled)
			LT Brenda 3307 (Polled)
{	VVCR Wyoming Payweight 6652 Dam Age: 5 (Polled)	{	LT Prime Wind 940 (Polled)
			VVCR Payweight Sure 1735 (Polled)

Tag: 1298 **WWt:** 675
Born: 5/1/2021 **WInd:** 103
BW: 85(-0.9) EPD **18 Mo Ind:** 102

Lot 174 VVCR New Bingo 1247 Polled

{	New Standard 8744 (Polled)	{	M6 New Standard 842 ET (Polled)
			BHC Genie 32 016 FL (Polled)
{	VVCR Bingo Gridmaker 7563 Dam Age: 4 (Polled)	{	VVCR Bingo Line 2182 (Polled)
			VVCR Gridmaker Wyoming 5606 (Polled)

Tag: 1247 **WWt:** 676
Born: 4/18/2021 **WInd:** 103
BW: 87(-2.5) EPD **18 Mo Ind:** 101

Lot 175 VVCR Ledger Stacked 1144 Polled

{	Ledger 7404 (Polled)	{	LT Ledger 0332 (Polled)
			LT Brenda 3307 (Polled)
{	VVCR Stacked Prime 6525 Dam Age: 5 (Polled)	{	Stacked Value 3566 (Polled)
			VVCR Primed Gridmaker 3736 (Polled)

Tag: 1144 **WWt:** 675
Born: 4/7/2021 **WInd:** 103
BW: 86(-1.6) EPD **18 Mo Ind:** 101

Lot 176 VVCR Mountain Bingo 1127 Polled

{	Mountain Man 9015 (Polled)	{	LT Rushmore 8060 (Polled)
			WC Pearl 7013 (Polled)
{	VVCR Bingo Wyoming 5710 Dam Age 16 (Polled)	{	VVCR Bingo Line Duke 7202 (Polled)
			VVCR Wyo Bingo 3535 (Polled)

Tag: 1127 **WWt:** 674
Born: 4/3/2021 **WInd:** 103
BW: 82(-3.5) EPD **18 Mo Ind:** 101



COWS CLIMB TO TOP FOR GRASS



TRAILING FROM THE HILLS

Lot 177 VVCR Ledger Payweight 1253 Polled

{	Ledger 7404 (Polled)	{	LT Ledger 0332 (Polled)
			LT Brenda 3307 (Polled)
{	VVCRPaywght Bluegrass3765 Dam Age: 8 (Polled)	{	Payweight 635 (Polled)
			VVCR Blue Tradition 8784 (Polled)

Tag: 1253 **WWt:** 668
Born: 4/19/2021 **WInd:** 102
BW: 80(-1.4) EPD **18 Mo Ind:** 101

Lot 178 VVCR Free Bingo 1336 Polled

{	Free Lunch FC 5652 (Polled)	{	Free Lunch 708T (Polled)
			Fink Megan 7750 (Polled)
{	VVCR Bingo Gridmaker 8587 Dam Age: 3 (Polled)	{	VVCR Bingo Line 2203 (Polled)
			VVCR Gridmaker Line 6547 (Polled)

Tag: 1336 **WWt:** 665
Born: 5/31/2021 **WInd:** 102
BW: 86(-1.3) EPD **18 Mo Ind:** 101

Lot 179 VVCR Bingo Response 1294 Polled***Heifer Bull***

{	VVCR Bingo Line 8110 (Polled)	{	VVCR Bingo Line 2182 (Polled)
			VVCR Bingo Wyoming 6576 (Polled)
{	VVCRResponseGridmakr9615 Dam Age: Hfr (Polled)	{	WC Response 7322 (Polled)
			VVCR Gridmaker Wyoming 1760 (Polled)

Tag: 1294 **WWt:** 680
Born: 4/29/2021 **WInd:** 104
BW: 75(-3.6) EPD Hfr **18 Mo Ind:** 107

Lot 180 VVCR Bingo Ledger 1198 Polled***Heifer Bull***

{	VVCR Bingo Line 8110 (Polled)	{	VVCR Bingo Line 2182 (Polled)
			VVCR Bingo Wyoming 6576 (Polled)
{	VVCR Ledger Blue 9587 Dam Age: Hfr (Polled)	{	LT Ledger 7404 (Polled)
			VVCR Blue Bingo 4822 (Polled)

Tag: 1198 **WWt:** 675
Born: 4/13/2021 **WInd:** 104
BW: 74(-3.0) EPD Hfr **18 Mo Ind:** 106

Lot 181 VVCR Bingo Ledger 1224 Polled***Heifer Bull***

{	VVCR Bingo Line 8110 (Polled)	{	VVCR Bingo Line 2182 (Polled)
			VVCR Bingo Wyoming 6576 (Polled)
{	VVCR Ledger Whitehot 9583 Dam Age: Hfr (Polled)	{	LT Ledger 4595 (Polled)
			VVCR Whitehot Tradition 6758 (Polled)

Tag: 1224 **WWt:** 667
Born: 4/16/2021 **WInd:** 102
BW: 70(-2.8) EPD Hfr **18 Mo Ind:** 105

Lot 182 VVCR Bingo Free 1181 Polled***Heifer Bull***

{	VVCR Bingo Line 8110 (Polled)	{	VVCR Bingo Line 2182 (Polled)
			VVCR Bingo Wyoming 6576 (Polled)
{	VVCR Free Gridmaker 9630 Dam Age: Hfr (Polled)	{	Free Lunch FC 5652 (Polled)
			VVCR Gridmaker Whitehot 1727 (Polled)

Tag: 1181 **WWt:** 676
Born: 4/12/2021 **WInd:** 104
BW: 75(-2.8) EPD Hfr **18 Mo Ind:** 105

Lot 183 VVCR Bingo Venture 1159 Polled***Heifer Bull***

{	VVCR Bingo Line 8110 (Polled)	{	VVCR Bingo Line 2182 (Polled)
			VVCR Bingo Wyoming 6576 (Polled)
{	VVCR Venture Bingo 9609 Dam Age: Hfr (Polled)	{	LT Venture 3198 (Polled)
			VVCR Bingo Whitehot 3710 (Polled)

Tag: 1159 **WWt:** 670
Born: 4/8/2021 **WInd:** 102
BW: 65(-3.9) EPD Hfr **18 Mo Ind:** 104

Lot 184 VVCR Bingo Stacked 1131 Polled***Heifer Bull***

{	VVCR Bingo Line 8110 (Polled)	{	VVCR Bingo Line 2182 (Polled)
			VVCR Bingo Wyoming 6576 (Polled)
{	VVCR Stacked Bingo 9589 Dam Age: Hfr (Polled)	{	WC Stacked Value 3566 (Polled)
			VVCR Bingo Wyoming 0725 (Polled)

Tag: 1131 **WWt:** 665
Born: 4/4/2021 **WInd:** 102
BW: 73(-4.2) EPD Hfr **18 Mo Ind:** 104



Lot 185 VVCR Bingo Line 1190 Polled

Heifer Bull

{	VVCR Bingo Line 8110 (Polled)	{	VVCR Bingo Line 2182 (Polled)
	VVCR Bingo Line 9534 Dam Age: Hfr (Polled)		VVCR Bingo Wyoming 6576 (Polled)
		{	VVCR Power Bingo 6104 (Polled)
			VVCR Bingo Blue 7627 (Polled)

Tag:	1190	WWt:	672
Born:	4/12/2021	WInd:	103
BW:	70(-3.5) EPD Hfr	18 Mo Ind:	103

Lot 186 VVCR Bingo Ledger 1109 Polled

Heifer Bull

{	VVCR Bingo Line 8110 (Polled)	{	VVCR Bingo Line 2182 (Polled)
	VVCR Ledger Choice 9536 Dam Age: Hfr (Polled)		VVCR Bingo Wyoming 6576 (Polled)
		{	LT Ledger 348 (Polled)
			VVCR Choice Bingo 5579 (Polled)

Tag:	1109	WWt:	668
Born:	4/2/2023	WInd:	102
BW:	72(-3.7) EPD Hfr	18 Mo Ind:	103

Lot 187 VVCR Bingo Gridmaker 1146 Polled

Heifer Bull

{	VVCR Bingo Line 8110 (Polled)	{	VVCR Bingo Line 2182 (Polled)
	VVCR Gridmaker Trad 9598 Dam Age: Hfr (Polled)		VVCR Bingo Wyoming 6576 (Polled)
		{	M6 Gridmaker 627 (Polled)
			VVCR Tradition Gridmaker 9795 (Polled)

Tag:	1146	WWt:	660
Born:	4/7/2021	WInd:	101
BW:	68(-3.2) EPD Hfr	18 Mo Ind:	101

Lot 188 VVCR Bingo Ledger 1261 Polled

Heifer Bull

{	VVCR Bingo Line 8110 (Polled)	{	VVCR Bingo Line 2182 (Polled)
	VVCR Ledger Wind 9532 Dam Age: Hfr (Polled)		VVCR Bingo Wyoming 6576 (Polled)
		{	LT Ledger 348 (Polled)
			VVCR Windy Blue 5569 (Polled)

Tag:	1261	WWt:	658
Born:	4/21/2021	WInd:	101
BW:	62(-3.7) EPD Hfr	18 Mo Ind:	100



BIG COUNTRY TO ROAM FOR GRASS

TERMS AND CONDITIONS OF SALE

BIDDING: Each animal on which there are two or more bids will be sold to the highest bidder.

TERMS: Terms are cash settlement and must be made after completion of sale unless prior arrangements are made and notarized. Checks are accepted and should be made payable to: **Valley View Charolais Ranch, Inc.** The right of property shall not pass and release of cattle shall not be made until settlement is made and funds have cleared.

DISPUTES: The auctioneer will settle any disputes as to bids by declaring the bids void and reselling the animals in question.

HANDLING: All animals will be maintained prior to their sale at the risk of the cosigner. As their sale is effected, all animals will be maintained at the purchaser's risk. Insurance will be available upon request from agents that are attending the sale, or ask sale clerks. Insurance is always recommended on all purchases.

BREEDERS GUARANTEE: All bulls are fertility-examined and semen-evaluated by a licensed veterinarian. All animals sold are guaranteed breeders by the owner. Any animal that has not proven itself to be a breeder within six months after date of sale, if in healthy condition, may be returned to the seller at buyer's expense. The seller reserves the privilege of trying for a period of six months to prove the animal a breeder. If proven a breeder, the animal will be returned at the buyer's expense. Should the animal fail to prove a breeder, the seller, at his option, may either return the purchase price to the buyer or replace the animal with another of equal quality, in full settlement and satisfaction of all claims. All complaints regarding breeding difficulties must be reported in writing by the buyer to the seller within the time limit specified above, and any animals returned must be free of disease and in good healthy body condition.

ANNOUNCEMENT: Announcements from the auction box will take precedence over printed matter in this catalog or in other ads.



HEALTH: All animals will be cleared for health and have clearance in order for interstate or international shipment.

DELIVERY: Delivery is only guaranteed to central terminals such as stockyards in each area.



CONTRACTS: The above terms and guarantee constitute a contract between the buyer and the seller of each animal sold.

LIABILITIES: All persons who attend the sale do so at their own risk, and the owner and sales representatives assume no liability, legal or otherwise, for any accident which may occur.

ABSENTEE BIDS: Mail, email, or telephone bids may be made directly to Valley View Charolais Ranch, or to a representative field-man, or order-buyer representative of your choice. Bids need to be submitted to the Sale Management in plenty of time prior to the sale and will be handled strictly confidentially. Satisfaction is guaranteed on every bull upon delivery, so absentee buyers can feel completely confident in making a purchase sight-unseen. Each year many bulls are sold sight-unseen to buyers that are unable to attend the sale.

