

**Valley
View
Charolais
Ranch**

**56th
Annual
Bull Sale**

Saturday March 23, 2024



Call or Text Buddy--
Buddy Westphal: (406) 270-0222

Sale Starts at 1:00 p.m.
Complimentary Lunch at 11:30 a.m.

**Valley View
Charolais Ranch**

44601 Valley View Road
Polson, Montana 59860

Please Register at least 24 Hours prior to Sale

Register online or Call DV Auction at 402-316-5460

DVAuction
www.dvauction.com

Watch & Bid online for FREE!

Can't make the sale?

Let DVAuction bring the sale to you!

Busy during the sale?

Let DVAuction represent your bid!

Visit www.dvauction.com and Register!

It's as easy as 1, 2, 3...

1. Create an account at www.dvauction.com under the "create new account" tab
2. Apply for bidding by clicking "apply for bidding" in the upper left corner of your screen, at least 24 hours prior to the auction
3. Tune into the sale and make your purchases!

**For General Questions Please Contact Our Office:
(402) 316-5460 or support@dvauction.com**

***High Speed Internet Access Required**

A Guide to Reading Our Catalog

The bulls will sell in catalog order by lot number. Each bull is tagged with the lot number in one ear and his personal herd number (tag) in the other ear. Each bull was tagged, tattooed and weighed as a calf within hours of birth. The tattoo in the left ear corresponds with his ear tag number. Bulls are weighed and evaluated throughout the next 2 years.

Birth weight remains the most accurate indicator to predict ease of calving. Birth weight is highly heritable, but many other factors are relevant including genetics, age of dam, and nutrition. For 50 years we have selected bulls with shorter gestation (highly heritable), thereby allowing the calf to be born on time in 283 days or less, so it is not growing too large inside his mother and cause calving problems. A calf will gain one pound or more per day the last 30 days of gestation, so calving on time and not going overdue is important. Conformation of the calf does have significance in ease of calving. The myth that a big birth weight is acceptable if the calf is "long and lean" is proven wrong by the dystocia calves with a leg back or head back that cause calving problems due to being too "long" or too big to advance through the birth canal easily and correctly. Size (BW) matters!!

Age of dam affects birth weight as do her genetics and nutrition. A heifer bred to the same bull for her first, second and third calves may increase the birth weight as much as five pounds per year of age. We have found that a cow of 10 years and older may taper off in birth weight of her calf, also. A female born with a high birth weight herself will usually produce calves with high birth weights regardless of the sire mating. In this catalog, we provide the age of dam under her name in the pedigree so you can better evaluate each bull's birth weight. If (Hfr) is noted under the dam's name, she is a 2-year-old first-calf heifer and is bred to an easier-calving sire. If (3) is under the dam, she too is bred to an easier-calving bull and her age also affects the birth weight. If you are selecting bulls to use on heifers we suggest you select only from the *Heifer Bull* lots. For extra easy calving of small or young cows, select from the (Hfr) and (3) dams with low birth weights.

Nutrition can affect birth weight by 5 to 10 pounds. An easy winter can be followed by larger calves if the cows had it too easy and got too fat. A tough winter in which extra supplement has been pushed to the mothers or if they stood around in confinement with no exercise, that can also increase birth weights. Therefore, birth weights should not necessarily be compared from year to year within a herd, nor be compared to another herd with different cow size and age, or climate and management.



AERIAL VIEW OF VVCR-FLATHEAD RIVER & HORSESHOE BEND

We have determined that 100 lbs. is too big of a calf for us to feel comfortable selling to our customers who expect problem-free calving. Therefore, we cull all bulls born 100 lbs. and above, realizing a large dead calf at birth has a "distressingly poor growth rate" and weaning weight.

Weaning weights are adjusted to 205 days of age so that an early-born calf does not have extra days of growth advantage over a later calf. The majority of these bulls are born within a short four-week period, so adjustments are minimal. Weaning weights are taken close to the 205-day weaning time so the weaning weight listed is as near actual as possible. For a cow-calf operation, the maximum weaning weight put across the scales from the number of cows exposed at breeding time is the key formula for your success. Selecting the quality and quantity of bulls to get most of your cows bred the first cycle is essential. Each calf born 21 days late, at near three lbs. per day gain, means big dollars lost. This loss does not include open cows missed by the bulls. Select bulls that will produce the biggest and healthiest calf without calving problems. Research proves that cows given even minor calving assistance at birth do not breed back as quickly. Big calves at birth may give you big calves at weaning, but be sure you consider the pounds that do not go across the scales if the calf is dead at birth or his mom did not breed back. Therefore, do not totally disregard ease of calving while trying to increase your weaning weights.

The 18-mo. index listed in our catalog indicates the size of these bulls at 18 months and is a good indication of genetic capacity for mature size. We know that weaning weight indicates how big the calf was at birth plus the amount of milk his mother fed him. A year later, at 18 months of age, the bull has been on his own for about a year. He was fed a growing ration of primarily alfalfa hay after weaning and had to compete with over 250 other bulls in our weaning lot. Then, in spring, we turn out the entire group of yearling bulls on grass where they have to climb hills, walk through rocks and drink out of streams or the Flathead River. When they come in that fall, they know that life is NOT just a pile of bedding and a bunk full of silage and grain. We then index the size they have reached and evaluate structural soundness, along with their ability to be an easy keeper and put on growth and muscle out on their own eating grass. This sane way of maturing our two-year-old bulls allows you to select a mature bull that can and will travel well in your pasture, and breed more cows in a shorter breeding period. Plus they will stay sound for more years than feedlot-fattened yearling bulls. Our catalog order is based on the 18-mo. Index of the bulls.



Valley View Charolais Ranch

The Westphals

56th Annual Bull Sale

Saturday, March 23, 2024

Sale Starts at 1:00 p.m.



Friday and Saturday – View Bulls

Saturday – Sale starts at 1:00

***11:30 am Complimentary Lunch**

*** 1:00 pm Bull Sale starts promptly**

*** Social Immediately Following the Sale**

Auctioneer: Rick Machado
Cell: 805-501-3210

Sales Day Representatives:

- John Goggins *Western Ag Reporter*
406-698-4159
- Devon Murnin *Western Livestock Journal*
+ Livestock Insurance
406-696-1502
- Jeff Thomas *Prairie Star*
406-581-8859
- Clint Sexson AICA
541-609-0167
- DVAAuction 402-316-5460



DRIVING DIRECTIONS TO THE RANCH

From Missoula: Go 50 miles North on Hwy 93 to Ronan. At 2nd stop light in Ronan, turn left on Round Butte Road (State Highway 211) and go 8.5 miles. Turn right on Valley View Rd. (paved) and go 4.3 miles north to Valley View Charolais Ranch sign and driveway on the left.



From Polson: Go 7 blocks South on Main St. to 7th Ave. Turn right (Southwest) on 7th Ave. which is Kerr Dam Road (State Highway 358). Go 5½ miles (1/2 mile past mile-marker 5). Turn right on Eli Gap Rd. and go 4 miles west to a 4-way stop at the Valley View School. Turn left on Valley View Road and go 2 miles south to the Valley View

Charolais Ranch sign and driveway on the right.

Signs will mark both routes

Bull Sale is also on www.dvauctions.com

Please register at least 24 Hours prior to Sale if buying on line



VALLEY VIEW CHAROLAIS RANCH BREEDING PROGRAM

It is with pleasure that we present our two-year-old bulls in this *56th Annual Bull Sale*. We believe we are offering the kind of bulls that will optimize your cows' production. We hope you will continue to return for more of our bulls every year. Our business is based on long-term, satisfied return customers, and we **guarantee satisfaction** with every bull you purchase...the best guarantee in the business.

Our cowherd started 60 years ago, in 1962, with bloodlines from the Michaelis Ranch, the first breeders of Charolais in the U.S. (1934). The most-proven bloodlines in the Breed are represented in our pedigrees for many generations. Our sires are selected from bulls proven superior on the Canadian Conception-to-Consumer Test and AICA Sire Evaluation Test for traits from ease of calving to superior growth plus carcass quality. We have maintained extensive performance records including birth weight for every calf born since 1962. Our cows are culled for disposition, ease of calving, fertility, milk and mothering ability, as well as production index of her calves and her longevity. We firmly believe in using the scales to verify our quality, production, and genetic progress.

After good dispositions, our number-one consideration producing bulls is **ease of calving**. A bull that calves without problems out on the range fits this definition. We realize that a calf must be born alive to attain fantastic weaning and yearling weights. Only **if** they are born alive are we able to performance test and identify the superior-performing individuals. Our bulls are documented to out-perform other breeds in feedlot gain, feed efficiency, and carcass quality. Commercial cattlemen also gain a bonus explosion of hybrid vigor and added (extra) pounds through crossbreeding. ***Every animal sold is fully guaranteed.***

Due to maturity and semen capacity, you can expect our **two-year-old bulls** to breed more cows earlier in the breeding season and add 50-plus pounds of weaning weight to your calves. In the feedlot these calves will produce faster and more efficient gains, plus a bigger and higher-yielding carcass. The documented superior feed efficiency of our genetics is a major consideration for buyers. Success in the cattle business is all about live calves at birth with no calving problems; high weaning weights at selling time; good, efficient, and fast gains in the feedlot; and a high-yielding carcass for the packer to produce wholesome tender lean cuts of meat for the consumer. Charolais does this best and our bloodlines lead the Charolais Breed for these traits!

Years of research and testing confirm that high-yielding, lean carcasses cannot be produced any better than by Charolais-sired calves. Demand for these calves remains high, at any size, age or market across the nation. Charolais was the first breed imported from Europe, specifically for their ability to produce a bigger, leaner and better carcass from the Hereford and Angus cattle in the U.S. **Valley View Charolais Ranch two-year-old Bulls** calve easy and they are the modern meat-type bulls demanded by today's industry.

Carcass quality is not a new trait for our bulls. **Valley View Charolais Ranch Bulls** have sired **Montana Steer of Merit Carcass Champions** for over 30 years. Thirty-five years ago, the Montana Steer of Merit Carcass Champion was sired by a **VVCR** bull. This steer topped 836 entries from every



carcass contest held across the state. He graded choice, with .15 inches of backfat, a 17-inch rib eye and over 65% cutability. Our purebred heifer carcass data also continues to verify our fifty-five-year history of superior carcass-quality pedigrees.

Through our genetic selection we have proven: (1) there is no reason to have calving problems; (2) our bulls remain sound for more years of service; (3) Charolais-cross cows make excellent mothers; and (4) you can eliminate dehorning by using our Polled Charolais bulls. Our VVCR Bloodlines are the foundation bloodlines for several top Charolais herds across the nation, from New York to California and Canada to Texas. We have also exported females to other countries with great reception. While our primary business is producing bulls for crossbreeding in commercial herds, we also sell bulls that lead some top Charolais Herds nation-wide. Our bulls have been used at the U.S. Range Livestock Research Centers at Miles City and Havre in various research projects, including the closed Continental Breed developed there. We are convinced that you will benefit from our balanced breeding program and meet all of your breeding goals.

It is very gratifying to observe the progress our herd has achieved through sound selection and culling. Our breeding program remains very practical and middle-of-the-road and is based on superior genetics instead of big feed rations. The bulls offered today are **“Only the Best”** bulls of our 2022 calf crop. The top end has not been saved nor previously sold. This is the entire calf crop after two years of meticulous culling. These bulls have been screened for fertility, performance, conformation, pedigree and soundness. Each bull is semen tested and **guaranteed** to be a **sound breeding bull**.

Our bulls are raised under practical range conditions, nursing their mothers with no creep feeding. After weaning, they are fed alfalfa-mix hay for growing during the winter, then go to range pasture May to December. This matures them under the practical range conditions they will face the rest of their lives – they are NEVER over-fed in feedlot confinement. They are never pushed on feed. They are simply conditioned prior to our sale to be in optimum breeding condition for you. Without question, we could fatten the bulls to make them bigger today, but we know our athletically fit bulls will perform better for you than fat bulls that melt after turnout. We are focused on how a bull performs and produces for many years of service, and not how big and fat we can get him. We believe in allowing our bulls to grow and mature like breeding bulls should, in a normal, feasible and economical manner. Our bull lot is a row of bunks in a big pasture where the bulls are given plenty of room for exercise. Because of our practical manner of growing bulls, it is rare for one to go unsound.

We have great confidence in these **two-year-old bulls**, and are certain we have eliminated any bull with even very minor problems during our two years of selection and culling. We guarantee them to please you in every way so you will return for more bulls in future years. We welcome you to visit any time and hope to always have something new and progressive to show you, as well as a warm welcome.

---BUDDY WESTPHAL & family



CALF VIEW OF ROCKY MOUNTAINS

Reference Sire A
Patriot 9611 Polled

{	LT Patriot 4004 (Polled)	{	LT Ledger 0332 (Polled)
			LK Miss Rio 2119 (Polled)
{	LT Brenda 8034 (Polled)	{	Silver Distance 5342 (Polled)
			LT Brenda 6120 (Polled)

Look at this new Herd Sire--He has the genes for a dream! Patriot is one of the most popular bulls in Charolais history. His pedigree is loaded. He sold for \$105,000 at the 2015 LT sale. He is a leading AI Sire that has been used to breed thousands of commercial heifers and has thousands of Top Shelf famous registered progeny. Brenda 8034 is one of the best known and sought after donor cows ever. She sold in Grand Hills dispersal for \$50,000 at 12 years of age. An ET flush mate brother to this bull (Patriot 9458) sold for \$80,000 at the LT sale. Other famous Herd Sire brothers like LT Tioga have been sale toppers. Now take a look at Patriot's Lot 1 today and see the biggest and best bull in this sale. It's in the genes!! We couldn't be more proud of this new herd sire and we know he will be appreciated by both Purebred and commercial customers for many years to come.
EPDs: BW -4.8 WW 60 YW 105 MTL 55 TSI 274

Reference Sire C
GridMaker 627 Polled

{	M6 GridMaker 104 ET (Polled)	{	Sir Tradition 066 (Polled)
			Miss Mac IV 317 (Polled)
{	WC Blue Dutchess 9029 (Polled)	{	Bluegrass 4017 (Polled)
			Miss Duchess 9506 (Polled)

Gridmaker has been an all-around favorite at our ranch for many years and we have chosen to continue his superior proven genetics with this spectacular M6 son that is out of the great Bluegrass x Dutchess dam that is also the mother of the very-proven Weink bull "Big Ben". Gridmaker has done it all and proven it all from Easy Calving EPD to the Top 1% for Carcass Weight and Rib Eye, and the Top 2% for Marbling. If you want to add carcass traits with muscle plus bigger weaning weights, Gridmaker will do it right with deep, thick and stout calves. Also note the many Gridmaker dams in this bull sale that are the mothers of lots of the best performers. And note that the popular and famous Multi-Trait Leading bull, New Standard, is out of a Gridmaker daughter, too. You will always top your sale grid with Gridmaker calves.

EPDs: BW -1.3 WW 52 YW 101 MTL 53 TSI 251

Reference Sire B
Free Lunch 859 Polled

{	VPI Free Lunch 708T (Polled)	{	LT Rio Blanco 1234 (Polled)
			Miss Duchess 404 (Polled)
{	Fink Ms Grade Now 3844 (Polled)	{	LT Unlimited Ease 9108 (Polled)
			M6 Ms Grade Now 953 ET (Polled)

Every Bull Sale should offer a great "Free Lunch". We use this carcass-proven Free Lunch herd sire to put more pounds of meat on calves that yield high marbled Prime carcasses. If you like big butts on your calves, you will appreciate having a "Free Lunch" son breeding your cows. Here is a true performance-plus package for more pounds at weaning and gains in the feedlot. We have complete confidence in the ease of calving of Free Lunch. He has even been used on heifers. His EPDs are spectacular and high accuracy. Free Lunch is in the Top 3% for Carcass Weight and Top 1% Marbling for the entire Charolais breed. This unique pedigree is packed with proven bloodlines that we have used for years. You are sure to find a great "Free Lunch" in the sale barn at noon, then go see lots more super Free Lunch herd bulls in our sale pens.

EPDs: BW -4.5 WW 77 YW 131 MTL 61 TSI 278

Reference Sire D
LT Ledger 7404 Polled

{	LT Ledger 0332 (Polled)	{	LT Bluegrass 4017 (Polled)
			LT Brenda 6120 (Polled)
{	LT Brenda 3307 (Polled)	{	LT Ledger 0332 (Polled)
			LT Brenda's Breeze 0174 (Polled)

Ledger sold for \$105,000 in the LT Sale and his son Patriot also topped \$100,000 a couple of years later. He is the leading son of Bluegrass and is one of the top sires for semen sales in the Charolais Breed. He is now a Breed Icon for multiple traits and still ranks at the top in popularity. He is in the Top 2% for Rib Eye and Marbling and 1% for Scrotal Measurement. This bull's pedigree stacks three generations of highly-valued and very-proven genetics. Bluegrass (full brother to our Blue Ranger) and Wyoming Wind have been long-time favorites and proven stars in our herd for well over a decade now. Commercial cattlemen appreciate the proven calving ease and the vigor at birth, plus the extra pounds on the scales. This All-Around herd improver adds class and style, plus muscle and carcass merit. Having a good "Ledger" in your pasture will add dollars to your calf crop and to your checkbook Ledger.

EPDs: BW -3.1 WW 56 YW 103 MTL 55 TSI 255

Reference Sire E
Milestone 9561 Polled

- | | | | |
|---|--------------------------------|---|--------------------------------|
| { | WC Milestone 5223
(Polled) | { | WC Benelli 2134 ET
(Polled) |
| | | | WC Lady Blue 0506
(Polled) |
| | WC Dream Girl 6243
(Polled) | { | LT Rushmore 8060
(Polled) |
| | | | WC Miss Value 2213
(Polled) |

Milestone was the lead bull in the 2016 Denver Grand Champion Pen of 3. His big wide butt that carries down to his hocks is easy to see and judge. He caught the eye of many Charolais breeders at the sale and bid \$125,000 for half interest. Milestone was the #1 ranking REA for Charolais Bulls at 21.66 to ratio 144. Milestone sons have topped many sales across the US and Canada. His dam also produced WC Executive the next year that sold for \$100,000. We own two of his best sons and they are producing in this sale: ET full brothers—Magnum 9805 and Milestone 9561. We use these bulls to add length, width, and bigger loins. They will pack on pounds to sell at weaning, then grow fast on feed producing high yielding carcasses. The best carcass value is the loin and these bulls will have the best measurements. Milestone calves are the vigorous “jump up and suck” kind and they have extra good dispositions.

EPDs: BW -1.1 WW 69 YW 118 MTL 60 TSI 271

Reference Sire G
Patriot 0126 Polled

- | | | | |
|---|-----------------------------|---|---------------------------------|
| { | LT Patriot 4004
(Polled) | { | LT Ledger 0332
(Polled) |
| | | | LK Miss Rio 2119
(Polled) |
| | LT Liberty 9293
(Polled) | { | LT Rio Bravo 3181
(Polled) |
| | | | Miss HCR Reflection
(Polled) |

Only at a dispersal sale (Grand Hills in Colorado) would a breeder sell his Top Shelf Herd Sire genetics and allow a tremendous bull like Patriot 0126 to leave his ranch. Patriot is a breed leader internationally for semen sales and progeny registrations and has been proven superior in every economic category. His calving ease has been proven by breeding thousands of commercial heifers with tremendous calving success, that also performed superior at the feedlot. The feeders and packers know the Patriot name and pay premiums for their proven high gaining and high yielding genetics. Check out his front pasture class looking, thick butted bulls if you want the real deal from calving ease to carcass value. This Herd Sire ranks in the Top 10% of the breed for Carcass Weight. There's plenty to appreciate in phenotype and performance.

EPDs: BW -1.9 WW 65 YW 125 MTL 61 TSI 265

Reference Sire F
New Standard 8744 Polled

- | | | | |
|---|------------------------------------|---|--------------------------------------|
| { | M6 New Standard 842 ET
(Polled) | { | LT Rio Bravo 3181
(Polled) |
| | | | M6 Ms Grid Maker 2175 ET
(Polled) |
| | BHC Genie 32 OF 016 FL
(Polled) | { | VPI Free Lunch 708T
(Polled) |
| | | | BHC Genie 016 70 BG
(Polled) |

New Standard was the Charolais #1 Multi Trait Leader for many years in a row. He is also a Weaning Weight and Yearling Weight Trait Leader. His carcass traits rank in the Top 1% of the Breed for Rib Eye and Carcass Weight, and Top 1% for Scrotal Circumference. The huge 20+ inch Rib Eye measurement of this great bull is one of the largest you will see documented. He adds great volume and structure for higher weaning weight calves. His easy-calving Birth Weight EPD rounds out a “New Standard” for genetic advancement in our herd, plus in the entire Charolais Breed. His calves are born easy without sacrificing extra performance and pounds. Very predictably, it was a super Gridmaker momma that produced the famous “New Standard”. Loaded with eye appeal and performance you can depend on these genetics to add thickness with eye-popping class.

EPDs: BW -3.2 WW 77 YW 131 MTL 61 TSI 276

Reference Sire H
Free Lunch 041 ET Polled

- | | | | |
|---|-------------------------------------|---|-------------------------------------|
| { | VPI Free Lunch 708T
(Polled) | { | LT Rio Blanco 1234
(Polled) |
| | | | VPI Miss Duchess 404
(Polled) |
| | Finks Lady 6299 2682 GS
(Polled) | { | Fink Gold Standard 0153
(Polled) |
| | | | Finks Lady 2682 4945 GM
(Polled) |

Having lots of Free Lunch is the easiest way to pack on extra pounds for both you and your calves. Rest assured those extra pounds on your calves will be the premium dollar kind. If you like top EPDs in all the right places, this Herd Bull will deliver. He is ranked Top 3% of the breed for Weaning Weight, Top 4% for Carcass Weight, and Top 3% for the all-important Marbling gene that makes Prime Carcasses. A final critical number is Scrotal measurement to verify fertility and lots of breeding capacity and this guy ranks Top 2%. Now add the fact he is darn good looking and walks like a Stud! Free Lunch bulls have topped our sale many years with bulls like “Free Buffet” that are now proving exceptional at other purebred breeder’s sales. You will ALWAYS find a great Free Lunch at our sale!

EPDs: BW -1.1 WW 84 YW 134 MTL 62 TSI 272

Reference Sire I
Mountain Man 9015 Polled

{	LT Rushmore 8060 (Polled)	{	LT Rio Bravo 3181 (Polled)
	WC Pearl 7013 (Polled)		LT Brenda's Ease 3055 (Polled)
		{	LT Silver Distance 5342 (Polled)
			WC Capital Girl 5204 (Polled)

Mountain Man caught my eye because of his classy look plus huge Butt and Nuts and easy athletic traveling. His stellar performance data convinced me to buy an interest and use him on our second-calf heifers. His sound traveling and athletic phenotype is perfect to send him to the mountains and know he will cover both sides plus the top. His own 70-lb. (-3.8) birth and 836 weaning weight fit our genetic program just right. His multiple Top 10% of the breed EPDs are now verified in his soggy-made calves that are all out of 3-yr.-old mothers. From calving to carcass, he is a Star. Mountain Man has easily earned a spot in our front pasture. Here is another super source of predictable Rushmore genetics.

EPDs: BW -3.8 WW 76 YW 129 MTL 74 TSI 270

Reference Sire K
Distance 5200 Polled

{	LT Silver Distance 5342 (Polled)	{	Silver Yield 3196
	LT Graceful 8012 (Polled)		Mattie 9026 (Polled)
		{	Eatons Leader (Polled)
			Graceful 5195 (Polled)

Distance is a calving ease and multiple trait sire. Both Silver Distance and his son, Long Distance, have successfully been used in AI to breed thousands of first-calf heifers in both purebred and commercial herds. He is in the top 3% of the Charolais breed for low birth weight, yet his weaning weight performance is predictably solid. This bull produces excellent conformation and soundness and a very gentle attitude. His calves are short gestation, easy-going, and super quiet. Check out the sons of Distance for some grass-efficient super stars that all are out of second-calf heifers yet perform competitively well at weaning. Expect to have problem-free calves that will “Go the Distance” when you select these time-tested and popular genetics.

EPDs: BW -3.3 WW 53 YW 93 MTL 52 REA .72

Reference Sire J
Resource 9022 Polled

{	CCC WC Resource 417 (Polled)	{	LT Rushmore 8060 (Polled)
	CCC MS Blue Bud 502 TW (Polled)		WC CCC Blue Girl 1528 (Polled)
		{	LT Blue Value 7903 ET (Polled)
			Ms Bud's Avignon 209 (Polled)

Resource keeps setting the standard for easy-calving, fast-growing, fancy-looking calves. He is a brother to famous high-selling bulls Landmark and Affinity. His balanced eye appeal and muscle shape has made him a favorite in the show ring. His carcass merit is fantastic, rating in the Top 3% of all Charolais Bulls for the ever-important trait of Marbling. Check out the soggy made Resource sons in this sale--all of these super performers are out of 3-yr.-old second-calf heifers. Here is your “Resource” for problem-free classy stout calves that will go on to excel in the feedlot and make Prime grading carcasses.

EPDs: BW -1.9 WW 64 YW 103 MTL 63 MB .35

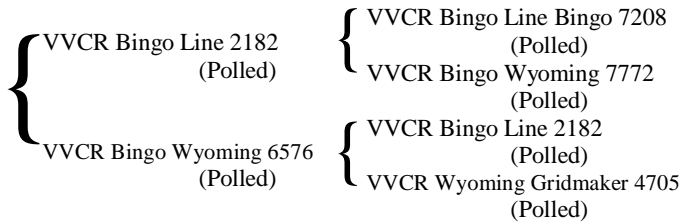
Reference Sire L
Sundance 6137 Polled

{	LT Sundance 2251 (Polled)	{	Ledger 0332 (Polled)
	LT Rhinestone 3030 (Polled)		Ballet 9219 (Polled)
		{	Oakdale Duke 9003 (Polled)
			Rhinestone 1315 (Polled)

Sundance is a thick, strong, muscular bull that will add pounds of red meat and dimension while infusing premium carcass merit in your calf crop. With the long-proven pedigree of Ledger and Duke you can expect high performance. He is a homozygous polled “Performance King” with Top 1% EPD ranking for WW and YW. Sundance also ranks in the Top 1% SC and CW, Top 3% TSI, Top 6% REA, plus the Top 15% for Marbling. Here is Multiple Trait Leading genes that are used heavily by breeders looking for more performance, carcass quality, fertility, and maternal value. The added pounds and performance of this sire will make your calves bigger and better. He casts a big shadow and will improve thickness and carcass value to a high-quality calf crop.

EPDs: BW -1.4 WW 66 YW 123 MTL 57 TSI 267

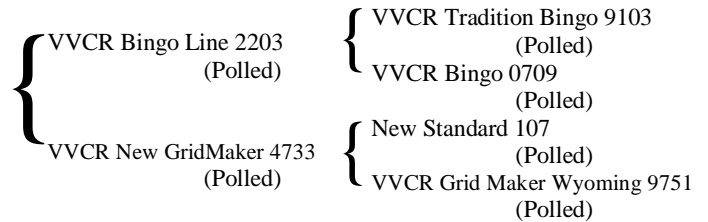
Reference Sire M
VVCR Bingo Line 8110 Polled



We have valued the iconic **Bingo bloodline** enough to continue using and linebreeding it for over 50 years. With 50+ years of testing thousands of bulls of all breeds, Bingo is still the #1 Bull for Total Breeding Value on the prestigious Conception to Consumer Test. **Bingo Line 8110** is our **highly-proven Heifer Bull** that is bullet-proof and a “sleep at night” sire that is reliable for short gestation calves, therefore smaller and jump up and suck calves at birth. Not just a heifer freshener, he is a herd improver that produces optimum performing and competitive calves with carcasses that are verified to grade prime. The intensive linebreeding of this pedigree assures extra reliability and predictability. We have sold hundreds of VVCR Bingo “Heifer Bulls” to notable ranches that have successfully bred their commercial heifers with total success. Customers return year after year for more Bingo Heifer Bulls.

EPDS: BW -5.2 WW 48 YW 78 MTL 39 MCE 13.7

Reference Sire N
VVCR Power Bingo 6104 Polled



Over fifty years ago, **Bingo** impressed me as the All-Around Herd Sire that I wanted to build our breeding program around. He is still recognized today as the #1 Bull for Total Breeding Value on the Conception to Consumer Test, after thousands of bulls of all breeds have been tested. For 50 years we have linebred, outcrossed and researched these top genetics. Power Bingo is THE “Power Bull” we’ve worked to develop that will calve easy out of heifers, and still compete in performance with calves from mature cows. Bingo Line is a short gestation and easy calving sire that is perfect for second calf heifers. The dam of Power Bingo is a treasure of genetics put together perfectly. Be sure to look through all the “Power” bulls for easy calving with powerful performance. Note that many of the TOP bulls in this sale have those favorite Bingo mothers!

EPDs: BW -4.1 WW 55 YW 93 MTL 45 MCE 12.2





2024 Sale Bulls



Lot 1 VVCR Diamond Patriot 2220 Polled

{	GHC Patriot 9611 (Polled)	LT Patriot 4004 (Polled)
		LT Brenda 8034 (Polled)
{	VVCR Primed Thick 4765 Dam Age 8 (Polled)	LT Primed 3288 (Polled)
		VVCR Thick Tradition 5827 (Polled)

Tag: 2220 **WWt:** 819
Born: 4/20/22 **WInd:** 124
BW: 87(-2.9) EPD **18 Mo Ind:** 121

This bull is a perfect introduction for our new Patriot pedigree. He is a **Gem!** This classy big guy was the “Class Favorite” in our calf pasture all year and was such a gem that we called him “**The Diamond**”. He was the heaviest weight at weaning (819 Lbs.) and was heaviest every weight afterwards, indexing at 124 at 18 months. It is easy to see he has his weight distributed in all the right places and a fault-free package. He is the kind of bull that will impress any cattleman at any operation. Starting with his 87-lb. birth and easy calving (-2.9) EPD he has every credential desired for a Herd Sire, including a super gentle disposition. His 8-yr.-old mother is Primed Thick 4765, and her name is accurate. She produced Lot 16 in last year’s sale and her 3-yr.-old daughter produced Lot 46 in this sale. No more story necessary – his looks and numbers say it all – he IS a Crown Jewel!

Lot 3 VVCR Extra Lunch 2197 Polled

{	Free Lunch 859 (Polled)	VPI Free Lunch 708 (Polled)
		Fink Ms Grade Now 3844 (Polled)
{	VVCR Value Blue 4859 Dam Age 8 (Polled)	LT Value Added 1016 (Polled)
		VVCR Blue Sure 8808 (Polled)

Tag: 2197 **WWt:** 810
Born: 4/17/22 **WInd:** 123
BW: 86(-3.7) EPD **18 Mo Ind:** 119

Free Lunch has been a very special genetic treasure for our ranch and his sons have topped our sale many times. Here is a bull that will continue the legacy of his industry-proven sire. “**Extra Lunch**” will add extra dimension, muscle capacity and push-button performance. Free Lunch dominates the breed for Marbling and Carcass EPDs and is in the Top 1% of all Charolais. Whether you sell his big stout calves at weaning or own them all the way, these calves will gain you notoriety with their high-yielding and high-grading carcasses. Their superior marbling is the key to carcass value. Here is some curve-bending growth and carcass excellence assured when buying an “**Extra Lunch**”.

Lot 2 VVCR Best Gridmaker 2131 Polled

{	Gridmaker 627 (Polled)	M6 Grid Maker 104 (Polled)
		WC Blue Dutchess 9029 (Polled)
{	VVCR Choice Bingo 5642 Dam Age 7 (Polled)	LT Long Choice 2069 (Polled)
		VVCR Bingo Unlimited 7770 (Polled)

Tag: 2131 **WWt:** 815
Born: 4/7/22 **WInd:** 123
BW: 88(-2.0) EPD **18 Mo Ind:** 120

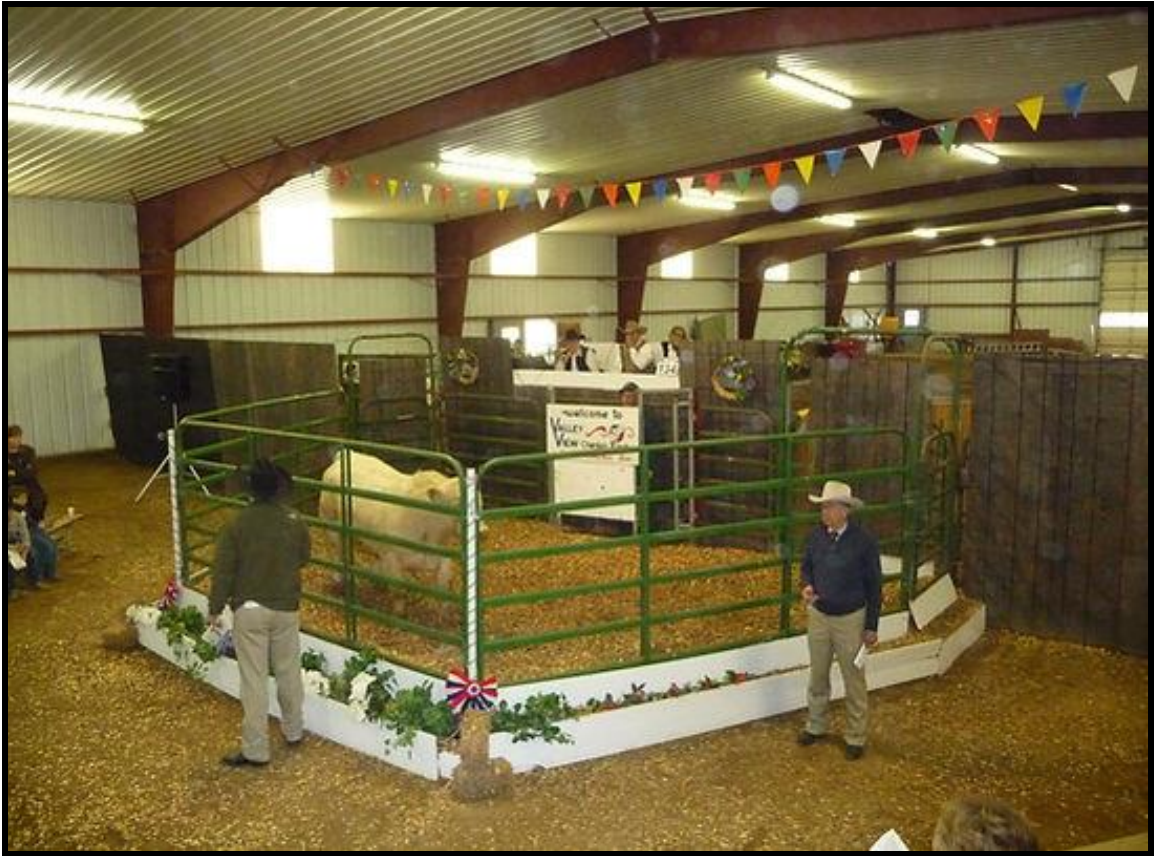
It is easy to see why we love Gridmaker when three of the Top Ten bulls in this sale are sired by Gridmaker and have Gridmaker dams. We named this bull “**Best Gridmaker**” because he was identified that way all year. At 815 lbs. he was just one drink away from being our highest weaning weight. Look at his power and performance. He is long and thick to add pounds and profit to every calf he sires. Those are the pounds that pay the bills! His dandy picture-perfect Choice Bingo dam is obviously a special one, producing 815 lbs. on drought-challenged pasture. This bull checks all the boxes for pedigree, phenotype and performance. He will add market value to any progressive breeding program.

Lot 4 VVCR Mighty Milestone 2199 Polled

{	WC GHC Milestone 9561 (Polled)	WC Milestone 5223 (Polled)
		WC Dream Girl 6243 (Polled)
{	VVCR New Standard Wyo 3793 Dam Age 9 (Polled)	New Standard 107 (Polled)
		VVCR Wyoming Congr 4624 (Polled)

Tag: 2199 **WWt:** 805
Born: 4/17/22 **WInd:** 122
BW: 90(-2.3) EPD **18 Mo Ind:** 119

We are very proud to introduce our impressive new “Milestone” genetic package. We think this big stud makes an outstanding representative for added top genetics. His World-Class powerhouse daddy would be proud, and “**Mighty Milestone**” exhibits all of the qualities we look for in an ideal breeding bull. He will stamp progeny with superior quality and consistency. His 9-yr.-old New Standard mom also gets special credit for producing another 800-lb. superstar. We strive to produce Butts, Nuts and Guts and this “**Mighty Milestone**” delivers in all aspects. His extra gentle demeanor is also appreciated. Here is another “Front Pasture” Stud that is truly Mighty!



50TH ANNIVERSARY SALE



HEADED FOR THE SALE RING

Lot 5 VVCR Gridmaker Bingo 2179 Polled

{	Gridmaker 627 (Polled)	{	M6 Grid Maker 104 (Polled)
			WC Blue Dutchess 9029 (Polled)
{	VVCR Bingo Leading 3740 Dam Age 9 (Polled)	{	VVCR Tradition Bingo 3205 (Polled)
			VVCR Gridmaker Mac 8806 (Polled)

Tag: 2179	WWt: 812
Born: 4/14/22	WInd: 123
BW: 86(-3.0) EPD	18 Mo Ind: 118

Another **Top Gridmaker** and a 9-yr.-old Bingo Dam, which makes him a ¾ brother to Lot 2. Here is a real cowman's bull with great thickness, volume, muscle and lots of eye-popping good pounds. Another 800-lb. plus weaning weight to verify the scale-crushing performance that you can expect Gridmaker to produce for you. If you sell your calves by the pound, you will appreciate the thickness from front to back and recognize the power in the blood for Gridmaker genes. Soundness and longevity are additional economic traits that are verified by the advanced age of both the impressive sire and dam.

Lot 7 VVCR New Gridmaker 2162 Polled

{	New Standard 8744 (Polled)	{	M6 New Standard 842 (Polled)
			BHC Genie 32 of 016 FL (Polled)
{	VVCR GridMaker Blue 4780 Dam Age 8 (Polled)	{	GridMaker 817 (Polled)
			VVCR Blue GridMaker 1748 (Polled)

Tag: 2162	WWt: 802
Born: 4/10/22	WInd: 122
BW: 88(-2.3) EPD	18 Mo Ind: 118

This **New Standard** stud will command your attention with his dominating phenotype and superior conformation. He will establish a "new standard" for an elite ranch. He is stout made with a big wide butt and moves like a cat. The 8-yr.-old Gridmaker momma also ensures extra pounds shown by the 800-lb. weaning weight for this soggy herd changer. Include gentle with his other special attributes. New Standard is a long-time Multi-trait leader for the breed and this attractive stud expresses all those good traits. His calves will be vigorous and will jump up and suck. He will cover lots of cows in even challenging environment. You will be rewarded with extra pounds and extra dollars from his muscular, thick and stylish-looking calves.

Lot 6 VVCR Patriot Value 2135 Polled

{	GHC Patriot 9611 (Polled)	{	LT Patriot 4004 (Polled)
			LT Brenda 8034 (Polled)
{	VVCR Valued Wind 7660 Dam Age 5 (Polled)	{	WC Value Added 3520 (Polled)
			VVCR Windy Whitehot 4863 (Polled)

Tag: 2135	WWt: 812
Born: 4/7/22	WInd: 123
BW: 86(-2.7) EPD	18 Mo Ind: 118

"**Valued Patriot**" has an elite Herd Sire pedigree for producing dominating true performance. He adds verified genetics and substance for conformation and soundness. His 812-lb. weaning weight is packed with a prominent pop muscle that will be passed on to every calf he sires. He will add attractive pounds and increased value to an impressive set of calves. He is the kind of bull that the neighbors will notice and so will your order buyers. He is another very gentle bull with the picture-perfect profile of a real "**Valued Patriot**" and will be a prized herd changer.

Lot 8 VVCR Legendary 2229 Polled

{	LT Ledger 7404 (Polled)	{	LT Ledger 0332 (Polled)
			LT Brenda 3307 (Polled)
{	VVCR Colt 45 Gridmaker8580 Dam Age 4 (Polled)	{	Colt 45 249Z (Polled)
			VVCR Gridmaker Line 4720 (Polled)

Tag: 2229	WWt: 807
Born: 4/21/22	WInd: 122
BW: 89(-2.1) EPD	18 Mo Ind: 117

The one thing that you can depend on with Ledger sons – they WILL be GREAT! Ledger is the notable \$105,000 bull that has produced multiple \$100,000 sons. He is super himself and produces even better. "**Legendary**" is a dependable ease-of-calving bull with -2.1 EPD and has an over 800-lb. weaning weight. If you like thick stout fancy performers, these Ledger and Gridmaker genes have proven superior with countless \$100,000 progeny. You can't stack proven genetics any better than with this truly "**Legendary**" Ledger – he will be an asset to any cowherd.



HEIFER BULL SOLD IN PREVIOUS SALE



BUTTS, NUTS AND GUTS

Lot 9 VVCR Ledger Line 2138 Polled/S

{	LT Ledger 7404 (Polled)	{	LT Ledger 0332 (Polled)
	VVCR Ledger Bluegrass 8516 Dam Age 4 (Polled)		LT Brenda 3307 (Polled)
		{	Ledger 4595 (Polled)
			VVCR Bluegrass Thick 3804 (Polled)

Tag:	2138	WWt:	810
Born:	4/8/22	WInd:	123
BW:	87(-3.0) EPD	18 Mo Ind:	117

Lot 10 VVCR Gridmaker New 2139 Polled

{	Gridmaker 627 (Polled)	{	M6 Grid Maker 104 (Polled)
	VVCR New Bluegrass 7621 Dam Age 5 (Polled)		WC Blue Dutchess 9029 (Polled)
		{	New Standard 2849 (Polled)
			VVCR Blue Grid 0731 (Polled)

Tag:	2139	WWt:	796
Born:	4/8/22	WInd:	121
BW:	86(-2.6) EPD	18 Mo Ind:	117

Lot 11 VVCR Gridmaker Thick 2153 Polled

{	Gridmaker 627 (Polled)	{	M6 Grid Maker 104 (Polled)
	VVCR Thick Tundra 7778 Dam Age 15 (Polled)		WC Blue Dutchess 9029 (Polled)
		{	LT Thick Star 553 (Polled)
			VVCR Tundra Bingo 6609 (Polled)

Tag:	2153	WWt:	795
Born:	4/10/22	WInd:	121
BW:	89(-0.5) EPD	18 Mo Ind:	117

Lot 12 VVCR Free Value 2148 Polled

{	Free Lunch 859 (Polled)	{	VPI Free Lunch 708 (Polled)
	VVCR Value Wyoming 4764 Dam Age 8 (Polled)		Fink Ms Grade Now 3844 (Polled)
		{	LT Value Added 1016 (Polled)
			VVCR Wyoming Unlimited 5728 (Polled)

Tag:	2148	WWt:	800
Born:	4/9/22	WInd:	122
BW:	90(-2.5) EPD	18 Mo Ind:	117

Lot 13 VVCR Free Colt 2203 Polled

{	Free Lunch 859 (Polled)	{	VPI Free Lunch 708 (Polled)
	VVCR Colt 45 Bingo 4753 Dam Age 8 (Polled)		Fink Ms Grade Now 3844 (Polled)
		{	Colt 45 249Z (Polled)
			VVCR Bingo Gridmaker 1733 (Polled)

Tag:	2203	WWt:	798
Born:	4/17/22	WInd:	122
BW:	86(-3.3) EPD	18 Mo Ind:	117

Lot 14 VVCR Resource New 2262 Polled

{	CCC Resource 9022 (Polled)	{	WC Resource 417 (Polled)
	VVCR New Leading 8635 Dam Age 4 (Polled)		CCC MS Blue Bud 502 (Polled)
		{	New Standard 2849 (Polled)
			VVCR Leading Easy 2721 (Polled)

Tag:	2262	WWt:	794
Born:	4/29/22	WInd:	121
BW:	87(-2.4) EPD	18 Mo Ind:	117

Lot 15 VVCR Patriot Ledger 2144 Polled

{	GHC Patriot 0126 (Polled)	{	LT Patriot 4004 (Polled)
	VVCR Ledger Payweight 8532 Dam Age 4 (Polled)		LT Liberty 9293 (Polled)
		{	Ledger 348 (Polled)
			VVCR Payweight Wyoming 3712 (Polled)

Tag:	2144	WWt:	795
Born:	4/9/22	WInd:	121
BW:	85(-2.5) EPD	18 Mo Ind:	117

Lot 16 VVCR Gridmaker Bluegrass 2180 Polled

{	Gridmaker 627 (Polled)	{	M6 Grid Maker 104 (Polled)
	VVCR Bluegrass Gridmaker 6618 Dam Age 6 (Polled)		WC Blue Dutchess 9029 (Polled)
		{	LT Bluegrass 0353 (Polled)
			VVCR Gridmaker Wyoming 0784 (Polled)

Tag:	2180	WWt:	790
Born:	4/14/22	WInd:	121
BW:	90(-1.9) EPD	18 Mo Ind:	116

Lot 17 VVCR Patriot Value 2250 Polled

{	GHC Patriot 9611 (Polled)	{	LT Patriot 4004 (Polled)
	VVCR Value Gridmaker 6544 Dam Age 6 (Polled)		LT Brenda 8034 (Polled)
		{	WC Value Added 3520 (Polled)
			VVCR Gridmaker Bingo 0772 (Polled)

Tag: 2250 **WWt:** 793
Born: 4/25/22 **WInd:** 121
BW: 86(-3.6) EPD **18 Mo Ind:** 116

Lot 18 VVCR Milestone Wyoming 2137 Polled

{	WC GHC Milestone 9561 (Polled)	{	WC Milestone 5223 (Polled)
	VVCR Wyoming Blue 5560 Dam Age 7 (Polled)		WC Dream Girl 6243 (Polled)
		{	Wyoming Prime 933 (Polled)
			VVCR Blue Wyoming 8868 (Polled)

Tag: 2137 **WWt:** 790
Born: 4/8/22 **WInd:** 121
BW: 89(-1.2) EPD **18 Mo Ind:** 116

Lot 19 VVCR Free Gridmaker 2299 Polled

{	Free Lunch 041 (Polled)	{	VPI Free Lunch 708 (Polled)
	VVCR Gridmaker Prime 6624 Dam Age 6 (Polled)		Finks Lady 6299 2682 GS (Polled)
		{	Gridmaker 2871 (Polled)
			VVCR Prime Sure 5719 (Polled)

Tag: 2299 **WWt:** 789
Born: 5/18/22 **WInd:** 121
BW: 86(-1.7) EPD **18 Mo Ind:** 116

Lot 20 VVCR Free Wyoming 2290 Polled

{	Free Lunch 041 (Polled)	{	VPI Free Lunch 708 (Polled)
	VVCR Wyoming Prime 5510 Dam Age 7 (Polled)		Finks Lady 6299 2682 GS (Polled)
		{	LT Wyoming Prime 933 (Polled)
			VVCR Prime Sure 5719 (Polled)

Tag: 2290 **WWt:** 787
Born: 5/13/22 **WInd:** 120
BW: 87(-1.8) EPD **18 Mo Ind:** 116

Lot 21 VVCR Magnum Ledger 2169 Polled

{	WC Magnum 9805 (Polled)	{	WC Milestone 5223 (Polled)
	VVCR Ledger Leading 9519 Dam Age 3 (Polled)		WC Dream Girl 6243 (Polled)
		{	LT Ledger 4595 (Polled)
			VVCR Windy Whitehot 4849 (Polled)

Tag: 2169 **WWt:** 788
Born: 4/13/22 **WInd:** 120
BW: 89(-1.8) EPD **18 Mo Ind:** 116

Lot 22 VVCR Resource Power 2212 Polled

{	CCC Resource 9022 (Polled)	{	WC Resource 417 (Polled)
	VVCR Power BingoWind8574 Dam Age 4 (Polled)		CCC MS Blue Bud 502 (Polled)
		{	VVCR Power Bingo 6104 (Polled)
			VVCR Windy Bingo 6680 (Polled)

Tag: 2212 **WWt:** 785
Born: 4/16/22 **WInd:** 120
BW: 85(-3.2) EPD **18 Mo Ind:** 116

Lot 23 VVCR Sundance Gridmaker 2265 Polled

{	LT Sundance 6137 (Polled)	{	LT Sundance 2251 (Polled)
	VVCR Gridmaker Bingo 6519 Dam Age 6 (Polled)		LT Rhinestone 3030 (Polled)
		{	Gridmaker 2871 (Polled)
			VVCR Bingo Wyo 1795 (Polled)

Tag: 2265 **WWt:** 782
Born: 4/29/22 **WInd:** 119
BW: 88(-1.3) EPD **18 Mo Ind:** 115

Lot 24 VVCR Free Primed 2257 Polled

{	Free Lunch 859 (Polled)	{	VPI Free Lunch 708 (Polled)
	VVCR Primed Sure 9723 Dam Age 13 (Polled)		Fink Ms Grade Now 3844 (Polled)
		{	LT Primed 3288 (Polled)
			VVCR Sure Line 5720 (Polled)

Tag: 2257 **WWt:** 780
Born: 4/28/22 **WInd:** 119
BW: 86(-5.5) EPD **18 Mo Ind:** 115

Lot 25 VVCR Milestone Value 2172 Polled

{	WC GHC Milestone 9561 (Polled)	{	WC Milestone 5223 (Polled)
	VVCR Value Payweight 5538 Dam Age 7 (Polled)		WC Dream Girl 6243 (Polled)
		{	LT Value Added 1016 (Polled)
			VVCR Payweight Sure 1751 (Polled)

Tag:	2172	WWt:	780
Born:	4/13/22	WInd:	119
BW:	86(-2.2) EPD	18 Mo Ind:	115

Lot 26 VVCR Ledger Payweight 2187 Polled

{	LT Ledger 7404 (Polled)	{	LT Ledger 0332 (Polled)
	VVCR Payweight Sure 1751 Dam Age 11 (Polled)		LT Brenda 3307 (Polled)
		{	Payweight 635 (Polled)
			VVCR Sure Bingo 4507 0

Tag:	2187	WWt:	781
Born:	4/15/22	WInd:	119
BW:	86(-2.6) EPD	18 Mo Ind:	115

Lot 27 VVCR Patriot Gridmaker 2208 Polled

{	GHC Patriot 9611 (Polled)	{	LT Patriot 4004 (Polled)
	VVCR Gridmaker Wyo 4787 Dam Age 8 (Polled)		LT Brenda 8034 (Polled)
		{	Gridmaker 9890 (Polled)
			VVCR Wyoming Primed 8744 (Polled)

Tag:	2208	WWt:	778
Born:	4/18/22	WInd:	119
BW:	86(-3.6) EPD	18 Mo Ind:	115

Lot 28 VVCR Resource New 2213 Polled

{	CCC Resource 9022 (Polled)	{	WC Resource 417 (Polled)
	VVCR New Standard Easy 8510 Dam Age 4 (Polled)		CCC MS Blue Bud 502 (Polled)
		{	New Standard 2849 (Polled)
			VVCR Easy Sure 9853 (Polled)

Tag:	2213	WWt:	774
Born:	4/19/22	WInd:	118
BW:	86(-2.3) EPD	18 Mo Ind:	115

Lot 29 VVCR Free Bluegrass 2132 Polled

{	Free Lunch 859 (Polled)	{	VPI Free Lunch 708 (Polled)
	VVCR Bluegrass Bingo 7580 Dam Age 5 (Polled)		Fink Ms Grade Now 3844 (Polled)
		{	Bluegrass 1007 (Polled)
			VVCR Bingo Wyoming 0725 (Polled)

Tag:	2132	WWt:	779
Born:	4/7/22	WInd:	119
BW:	87(-3.4) EPD	18 Mo Ind:	114

Lot 30 VVCR Patriot Bingo 2121 Polled

{	GHC Patriot 0126 (Polled)	{	LT Patriot 4004 (Polled)
	VVCR Bingo Gridmaker 8587 Dam Age 4 (Polled)		LT Liberty 9293 (Polled)
		{	VVCR Bingo Line 2203 (Polled)
			VVCR Gridmaker Line 6547 (Polled)

Tag:	2121	WWt:	775
Born:	4/4/22	WInd:	118
BW:	85(-2.4) EPD	18 Mo Ind:	114

Lot 31 VVCR Patriot Bingo 2233 Polled

{	GHC Patriot 0126 (Polled)	{	LT Patriot 4004 (Polled)
	VVCR Double Bingo 8698 Dam Age 4 (Polled)		LT Liberty 9293 (Polled)
		{	VVCR Bingo Leader 4160 (Polled)
			VVCR Bingo Line Colt 45 6557 (Polled)

Tag:	2233	WWt:	775
Born:	4/22/22	WInd:	118
BW:	86(-3.6) EPD	18 Mo Ind:	114

Lot 32 VVCR New Leader 2151 Polled/B

{	New Standard 8744 (Polled)	{	M6 New Standard 842 (Polled)
	VVCR Leader GridMaker 0813 Dam Age 12 (Polled)		BHC Genie 32 of 016 FL (Polled)
		{	LT Leader 8088 (Polled)
			VVCR GridMaker Wyoming 7768 (Polled)

Tag:	2151	WWt:	774
Born:	4/9/22	WInd:	118
BW:	85(-2.9) EPD	18 Mo Ind:	114

Lot 33 VVCR Mountain Bingo 2128 Polled/B

{	WC Mountain Man 9015 (Polled)	{	LT Rushmore 8060 (Polled)
	VVCR Bingo Stacked 9594 Dam Age 3 (Polled)		WC Pearl 7013 (Polled)
		{	VVCR Power Bingo 6104 (Polled)
			VVCR Stacked Gridmaker 7557 (Polled)

Tag:	2128	WWt:	772
Born:	4/6/22	WInd:	118
BW:	82(-3.7) EPD	18 Mo Ind:	114

Lot 34 VVCR Choice Wyoming 2284 Polled

{	LT Ledger 7404 (Polled)	{	LT Ledger 0332 (Polled)
	VVCR Choice Wyoming 5552 Dam Age 7 (Polled)		LT Brenda 3307 (Polled)
		{	Long Choice 2069 (Polled)
			VVCR Wyoming UMac 7838 (Polled)

Tag:	2284	WWt:	775
Born:	5/11/22	WInd:	118
BW:	87(-1.5) EPD	18 Mo Ind:	114

Lot 35 VVCR Patriot New 2146 Polled

{	GHC Patriot 0126 (Polled)	{	LT Patriot 4004 (Polled)
	VVCR New Payweight 8566 Dam Age 4 (Polled)		LT Liberty 9293 (Polled)
		{	New Standard 2849 (Polled)
			VVCR Payweight Bingo 1730 (Polled)

Tag:	2146	WWt:	770
Born:	4/9/22	WInd:	118
BW:	86(-2.8) EPD	18 Mo Ind:	114

Lot 36 VVCR Mountain Free 2188 Polled

{	WC Mountain Man 9015 (Polled)	{	LT Rushmore 8060 (Polled)
	VVCR Free Easy 9530 Dam Age 3 (Polled)		WC Pearl 7013 (Polled)
		{	Free Lunch 5652 (Polled)
			VVCR Easy Tradition 2833 (Polled)

Tag:	2188	WWt:	763
Born:	4/16/22	WInd:	116
BW:	86(-3.1) EPD	18 Mo Ind:	114

Lot 37 VVCR Free Hi Yield 2293 Polled

{	Free Lunch 041 (Polled)	{	VPI Free Lunch 708 (Polled)
	VVCR Hi Yield Bingo 2801 Dam Age 10 (Polled)		Finks Lady 6299 2682 GS (Polled)
		{	VVCR Hi Yield Thick 9188 (Polled)
			VVCR Bingo Wyo 5710 (Polled)

Tag:	2293	WWt:	768
Born:	5/16/22	WInd:	118
BW:	88(-3.0) EPD	18 Mo Ind:	113

Lot 38 VVCR Milestone Bingo 2201 Polled

{	WC GHC Milestone 9561 (Polled)	{	WC Milestone 5223 (Polled)
	VVCR Bingo Wyoming 7586 Dam Age 5 (Polled)		WC Dream Girl 6243 (Polled)
		{	VVCR Bingo Line 2182 (Polled)
			VVCR Wyoming Prime 5531 (Polled)

Tag:	2201	WWt:	767
Born:	4/17/22	WInd:	117
BW:	87(-3.1) EPD	18 Mo Ind:	113

Lot 39 VVCR Anchor Stacked 2114 Polled

{	WC GH Anchor 6516 (Polled)	{	LT Rushmore 8060 (Polled)
	VVCR Stacked Prime 6525 Dam Age 6 (Polled)		WC Clarice 2214 (Polled)
		{	WC Stacked Value 3566 (Polled)
			VVCR Primed Gridmaker 3736 (Polled)

Tag:	2114	WWt:	765
Born:	4/3/22	WInd:	117
BW:	86(-2.8) EPD	18 Mo Ind:	113

Lot 40 VVCR Ledger Stacked 2218 Polled

{	LT Ledger 7404 (Polled)	{	LT Ledger 0332 (Polled)
	VVCR Stacked Choice 8564 Dam Age 4 (Polled)		LT Brenda 3307 (Polled)
		{	WC Stacked Value 3566 (Polled)
			VVCR Choice Bingo 4775 (Polled)

Tag:	2218	WWt:	767
Born:	4/20/22	WInd:	117
BW:	85(-3.2) EPD	18 Mo Ind:	113

Lot 41 VVCR New Gridmaker 2178 DH

{	New Standard 8744 (Polled)	{	M6 New Standard 842 (Polled)
	VVCR Gridmaker Whitehot 1727 Dam Age 11 (Polled)		BHC Genie 32 of 016 FL (Polled)
{		{	Gridmaker 817 (Polled)
			VVCR Whitehot Bingo 5773 (Polled)
Tag:	2178	WWt:	766
Born:	4/14/22	WInd:	117
BW:	87(-1.7) EPD	18 Mo Ind:	113

Lot 42 VVCR Ledger New 2118 Polled

{	LT Ledger 7404 (Polled)	{	LT Ledger 0332 (Polled)
	VVCR Network Wind 9527 Dam Age 4 (Polled)		LT Brenda 3307 (Polled)
{		{	WC Network 6182 (Polled)
			VVCR Windy Leading 6664 (Polled)
Tag:	2118	WWt:	765
Born:	4/4/22	WInd:	116
BW:	86(-2.9) EPD	18 Mo Ind:	112

Lot 43 VVCR Sundance Ledger 2261 Polled

{	LT Sundance 6137 (Polled)	{	LT Sundance 2251 (Polled)
	VVCR Ledger GridMaker 7582 Dam Age 5 (Polled)		LT Rhinestone 3030 (Polled)
{		{	LT Ledger 348 (Polled)
			VVCR GridMaker Hi Yield 2820 (Polled)
Tag:	0	WWt:	765
Born:	4/29/22	WInd:	116
BW:	88(-3.2) EPD	18 Mo Ind:	112

Lot 44 VVCR Patriot New 2124 Polled

{	GHC Patriot 9611 (Polled)	{	LT Patriot 4004 (Polled)
	VVCR New Hi Yield 5504 Dam Age 7 (Polled)		LT Brenda 8034 (Polled)
{		{	New Standard 2849 (Polled)
			VVCR Hi Yield Wyoming 8742 (Polled)
Tag:	2124	WWt:	764
Born:	4/5/22	WInd:	116
BW:	86(-2.6) EPD	18 Mo Ind:	112

Lot 45 VVCR Patriot Gridmaker 2117 Polled

{	GHC Patriot 9611 (Polled)	{	LT Patriot 4004 (Polled)
	VVCR Gridmaker Payweight 4811 Dam Age 8 (Polled)		LT Brenda 8034 (Polled)
{		{	Gridmaker 817 (Polled)
			VVCR Payweight Bingo 1730 (Polled)
Tag:	2117	WWt:	762
Born:	4/4/22	WInd:	116
BW:	84(-4.4) EPD	18 Mo Ind:	112

Lot 46 VVCR Mountain Gridmaker 2149 Polled/S

{	WC Mountain Man 9015 (Polled)	{	LT Rushmore 8060 (Polled)
	VVCR Gridmaker Primed 9644 Dam Age 3 (Polled)		WC Pearl 7013 (Polled)
{		{	Gridmaker 627 (Polled)
			VVCR Primed Thick 4765 (Polled)
Tag:	2149	WWt:	753
Born:	4/9/22	WInd:	114
BW:	80(-2.6) EPD	18 Mo Ind:	112

Lot 47 VVCR Distance Ledger 2109 Polled

{	LT Distance 5200 (Polled)	{	LT Silver Distance 5342 (Polled)
	VVCR Ledger Gridmaker 8620 Dam Age 4 (Polled)		LT Graceful 8012
{		{	WC Ledger 4595 (Polled)
			VVCR Gridmaker Wyoming 9740 (Polled)
Tag:	2109	WWt:	755
Born:	4/2/22	WInd:	115
BW:	84(-2.0) EPD	18 Mo Ind:	112

Lot 48 VVCR Distance Sundance 2136 Polled

{	LT Distance 5200 (Polled)	{	LT Silver Distance 5342 (Polled)
	VVCR Sundance Prime 8655 Dam Age 4 (Polled)		LT Graceful 8012
{		{	LT Sundance 6137 (Polled)
			VVCR Double Prime 3766 (Polled)
Tag:	2136	WWt:	754
Born:	4/8/22	WInd:	115
BW:	85(-2.6) EPD	18 Mo Ind:	112

Lot 49 VVCR Free Gridmaker 2272 Polled

{ Free Lunch 859 (Polled) VVCR Gridmaker Line 5645 Dam Age 7 (Polled)	{ VPI Free Lunch 708 (Polled) Fink Ms Grade Now 3844 (Polled) Gridmaker 2871 (Polled) VVCR Grid Maker Sure 9822 (Polled)
Tag: 2272	WWt: 757
Born: 5/3/22	WInd: 115
BW: 86(-2.2) EPD	18 Mo Ind: 111

Lot 50 VVCR Free Wyoming 2164 Polled

{ Free Lunch 859 (Polled) VVCR Wyoming Payweight 6652 Dam Age 6 (Polled)	{ VPI Free Lunch 708 (Polled) Fink Ms Grade Now 3844 (Polled) LT Prime Wind 940 (Polled) VVCR Payweight Sure 1735 (Polled)
Tag: 2164	WWt: 760
Born: 4/11/22	WInd: 116
BW: 85(-3.0) EPD	18 Mo Ind: 111

Lot 51 VVCR Gridmaker Valued 2222 Polled

{ Gridmaker 627 (Polled) VVCR Valued Wyoming 8555 Dam Age 4 (Polled)	{ M6 Grid Maker 104 (Polled) WC Blue Dutchess 9029 (Polled) WC Value Added 3520 (Polled) VVCR Value Wyoming 4764 (Polled)
Tag: 2222	WWt: 758
Born: 4/20/22	WInd: 116
BW: 86(-1.7) EPD	18 Mo Ind: 111

Lot 52 VVCR Patriot Wyoming 2219 Polled

{ GHC Patriot 9611 (Polled) VVCR Wyoming Prime 5531 Dam Age 7 (Polled)	{ LT Patriot 4004 (Polled) LT Brenda 8034 (Polled) Wyoming Prime 933 (Polled) VVCR Primed Wyoming 7719 (Polled)
Tag: 2219	WWt: 756
Born: 4/20/22	WInd: 115
BW: 87(-3.7) EPD	18 Mo Ind: 111

Lot 53 VVCR Magnum Stacked 2163 Polled

{ WC Magnum 9805 (Polled) VVCR Stacked New 9548 Dam Age 3 (Polled)	{ WC Milestone 5223 (Polled) WC Dream Girl 6243 (Polled) WC Stacked Value 3566 (Polled) VVCR New Standard Thick 3803 (Polled)
Tag: 2163	WWt: 757
Born: 4/11/22	WInd: 116
BW: 86(-1.6) EPD	18 Mo Ind: 111

Lot 54 VVCR Patriot Bluegrass 2209 Polled

{ GHC Patriot 9611 (Polled) VVCR Bluegrass Payweight 5629 Dam Age 7 (Polled)	{ LT Patriot 4004 (Polled) LT Brenda 8034 (Polled) Bluegrass 1007 (Polled) VVCR Payweight Bingo 8710 (Polled)
Tag: 2209	WWt: 755
Born: 4/18/22	WInd: 115
BW: 85(-2.2) EPD	18 Mo Ind: 111

Lot 55 VVCR Free Value 2150 Polled

{ Free Lunch 041 (Polled) VVCR Value Payweight 5551 Dam Age 7 (Polled)	{ VPI Free Lunch 708 (Polled) Finks Lady 6299 2682 GS (Polled) LT Value Added 1016 (Polled) VVCR Payweight Wyo 1723 (Polled)
Tag: 2150	WWt: 750
Born: 4/9/22	WInd: 114
BW: 88(-1.6) EPD	18 Mo Ind: 111

Lot 56 VVCR Patriot Ledger 2238 Polled

{ GHC Patriot 9611 (Polled) VVCR Ledger Easy 7558 Dam Age 5 (Polled)	{ LT Patriot 4004 (Polled) LT Brenda 8034 (Polled) WC Stacked Value 3566 (Polled) VVCR Easy Whitehot 9854 (Polled)
Tag: 2238	WWt: 748
Born: 4/22/22	WInd: 115
BW: 85(-2.9) EPD	18 Mo Ind: 110

Lot 57 VVCR Patriot Stacked 2126 Polled

{	GHC Patriot 0126 (Polled)	{	LT Patriot 4004 (Polled)
	VVCR Stacked Payweight 8597 Dam Age 4 (Polled)		LT Liberty 9293 (Polled)
		{	WC Stacked Value 3566 (Polled)
Tag: 2126	WWt: 747		VVCR Payweight Gridmaker 4788 (Polled)
Born: 4/5/22	WInd: 115		
BW: 87(-2.8) EPD	18 Mo Ind: 110		

Lot 58 VVCR Gridmaker Line 2215 Polled

{	Gridmaker 627 (Polled)	{	M6 Grid Maker 104 (Polled)
	VVCR Gridmaker Primed 5546 Dam Age 7 (Polled)		WC Blue Dutchess 9029 (Polled)
		{	Gridmaker 2871 (Polled)
Tag: 2215	WWt: 745		VVCR Primed Bingo 0762 (Polled)
Born: 4/19/22	WInd: 114		
BW: 86(-3.5) EPD	18 Mo Ind: 110		

Lot 59 VVCR Distance Ledger 2140 Polled

{	LT Distance 5200 (Polled)	{	LT Silver Distance 5342 (Polled)
	VVCR Ledger Primed 8637 Dam Age 4 (Polled)		LT Graceful 8012 (Polled)
		{	LT Ledger 348 (Polled)
Tag: 2140	WWt: 744		VVCR Primed Unlimited 8840 (Polled)
Born: 4/8/22	WInd: 114		
BW: 83(-3.1) EPD	18 Mo Ind: 110		

Lot 60 VVCR Patriot Valued 2168 Polled

{	GHC Patriot 0126 (Polled)	{	LT Patriot 4004 (Polled)
	VVCR Valued Gridmaker 8523 Dam Age 4 (Polled)		LT Liberty 9293 (Polled)
		{	LT Value Added 1016 (Polled)
Tag: 2168	WWt: 742		VVCR Blue Gridmaker 1748 (Polled)
Born: 4/12/22	WInd: 113		
BW: 85(-3.1) EPD	18 Mo Ind: 110		

Lot 61 VVCR New Windy 2234 Polled

{	New Standard 8744 (Polled)	{	M6 New Standard 842 (Polled)
	VVCR Windy New 7610 Dam Age 5 (Polled)		BHC Genie 32 of 016 FL (Polled)
		{	LT Wind 5494 (Polled)
Tag: 2234	WWt: 740		VVCR New Standard Thick 3803 (Polled)
Born: 4/22/22	WInd: 113		
BW: 86(-2.1) EPD	18 Mo Ind: 110		

Lot 62 VVCR New Stacked 2287 Polled/S

{	New Standard 8744 (Polled)	{	M6 New Standard 842 (Polled)
	VVCR Stacked Gridmaker 7658 Dam Age 5 (Polled)		BHC Genie 32 of 016 FL (Polled)
		{	WC Stacked Value 3566 (Polled)
Tag: 2287	WWt: 737		VVCR Gridmaker Whitehot 0778 (Polled)
Born: 5/12/22	WInd: 113		
BW: 85(-4.1) EPD	18 Mo Ind: 109		

Lot 63 VVCR Distance Bingo 2176 DH

{	LT Distance 5200 (Polled)	{	LT Silver Distance 5342 (Polled)
	VVCR Bingo Stacked 8643 Dam Age 4 (Polled)		LT Graceful 8012 (Polled)
		{	VVCR Bingo Line 2182 (Polled)
Tag: 2176	WWt: 732		VVCR Stacked Prime 6525 (Polled)
Born: 4/14/22	WInd: 112		
BW: 84(-3.4) EPD	18 Mo Ind: 109		

Lot 64 VVCR New Gridmaker 2157 DH

{	New Standard 8744 (Polled)	{	M6 New Standard 842 (Polled)
	VVCR Gridmaker Wyo 2732 Dam Age 10 (Polled)		BHC Genie 32 of 016 FL (Polled)
		{	Gridmaker 817 (Polled)
Tag: 2157	WWt: 736		VVCR Wyoming Duke 6794 (Polled)
Born: 4/10/22	WInd: 113		
BW: 85(-1.6) EPD	18 Mo Ind: 109		

Lot 65 VVCR Milestone Blue 2239 Polled

{ WC GHC Milestone 9561 (Polled)
VVCR Blue Hi Yield 1819 Dam Age 11 (Polled)

{ WC Milestone 5223 (Polled)
WC Dream Girl 6243 (Polled)
LT Blue Ranger 6093 (Polled)
VVCR Hi Yield Whitehot 8786 (Polled)

Tag: 2239 **WWt:** 740
Born: 4/23/22 **WInd:** 113
BW: 87(-1.7) EPD **18 Mo Ind:** 109

Lot 66 VVCR Ledger Gridmaker 2311 Polled

{ LT Ledger 7404 (Polled)
VVCR Gridmaker Line 3805 Dam Age 9 (Polled)

{ LT Ledger 0332 (Polled)
LT Brenda 3307 (Polled)
Gridmaker 9890 (Polled)
VVCR Gridmaker Wyoming 8746 (Polled)

Tag: 2311 **WWt:** 738
Born: 5/24/24 **WInd:** 113
BW: 87(-1.8) EPD **18 Mo Ind:** 109

Lot 67 VVCR Free Blue 2304 Polled

{ Free Lunch 859 (Polled)
VVCR Blue Hi Yield 2841 Dam Age 10 (Polled)

{ VPI Free Lunch 708 (Polled)
Fink Ms Grade Now 3844 (Polled)
LT Blue Ranger 6093 (Polled)
VVCR Hi Yield Wyo 8733 (Polled)

Tag: 2304 **WWt:** 735
Born: 5/19/24 **WInd:** 112
BW: 86(-4.2) EPD **18 Mo Ind:** 109

Lot 68 VVCR Free Value 2110 Polled

{ Free Lunch 859 (Polled)
VVCR Value Blue 4721 Dam Age 8 (Polled)

{ VPI Free Lunch 708 (Polled)
Fink Ms Grade Now 3844 (Polled)
LT Value Added 1016 (Polled)
VVCR Blue Tradition 8784 (Polled)

Tag: 2110 **WWt:** 730
Born: 4/2/22 **WInd:** 112
BW: 85(-5.7) EPD **18 Mo Ind:** 109

Lot 69 VVCR Patriot Stacked 2161 Polled

{ GHC Patriot 0126 (Polled)
VVCR Stacked Colt 45 8567 Dam Age 4 (Polled)

{ LT Patriot 4004 (Polled)
LT Liberty 9293 (Polled)
WC Stacked Value 3566 (Polled)
VVCR Colt 45 Primed 4760 (Polled)

Tag: 2161 **WWt:** 728
Born: 4/10/22 **WInd:** 111
BW: 86(-3.6) EPD **18 Mo Ind:** 109

Lot 70 VVCR Mountain Gridmaker 2133 Polled

{ WC Mountain Man 9015 (Polled)
VVCR Gridmaker Tradition 9598 Dam Age 3 (Polled)

{ LT Rushmore 8060 (Polled)
WC Pearl 7013 (Polled)
Gridmaker 627 (Polled)
VVCR Tradition Gridmaker 9795 (Polled)

Tag: 2133 **WWt:** 722
Born: 4/7/22 **WInd:** 110
BW: 78(-3.5) EPD **18 Mo Ind:** 109

Lot 71 VVCR Gridmaker New 2112 Polled

{ Gridmaker 627 (Polled)
VVCR New Bluegrass 8688 Dam Age 4 (Polled)

{ M6 Grid Maker 104 (Polled)
WC Blue Dutchess 9029 (Polled)
New Standard 2849 (Polled)
VVCR Bluegrass Blue 2830 (Polled)

Tag: 2112 **WWt:** 727
Born: 4/3/22 **WInd:** 111
BW: 86(-2.4) EPD **18 Mo Ind:** 109

Lot 72 VVCR Anchor Colt 2266 Polled

{ WC GH Anchor 6516 (Polled)
VVCR Colt 45 Primed 4760 Dam Age 8 (Polled)

{ LT Rushmore 8060 (Polled)
WC Clarice 2214 (Polled)
Colt 45 249Z (Polled)
VVCR Primed Unlimited 1752 (Polled)

Tag: 2266 **WWt:** 725
Born: 4/29/22 **WInd:** 111
BW: 87(-2.1) EPD **18 Mo Ind:** 109

Lot 73 VVCR Resource Distance 2156 Polled

{	CCC Resource 9022 (Polled)	{	WC Resource 417 (Polled)
	VVCR Distance Choice 8583 Dam Age 4 (Polled)		CCC MS Blue Bud 502 (Polled)
		{	LT Distance 5200 (Polled)
			VVCR Choice Wyoming 5567 (Polled)

Tag:	2156	WWt:	725
Born:	4/10/22	WInd:	111
BW:	86(-3.4) EPD	18 Mo Ind:	109

Lot 74 VVCR Anchor Primed 2142 Polled

{	WC GH Anchor 6516 (Polled)	{	LT Rushmore 8060 (Polled)
	VVCR Primed Tradition 8799 Dam Age 14 (Polled)		WC Clarice 2214 (Polled)
		{	LT Primed 3288 (Polled)
			VVCR Tradition Bingo 9556 (Polled)

Tag:	2142	WWt:	732
Born:	4/9/22	WInd:	112
BW:	88(-3.3) EPD	18 Mo Ind:	109

Lot 75 VVCR Magnum Gridmaker 2115 Polled

{	WC Magnum 9805 (Polled)	{	WC Milestone 5223 (Polled)
	VVCR Gridmaker Wyoming 9517 Dam Age 3 (Polled)		WC Dream Girl 6243 (Polled)
		{	Gridmaker 627 (Polled)
			VVCR Wyoming Congr 3725 (Polled)

Tag:	2115	WWt:	728
Born:	4/4/22	WInd:	111
BW:	87(-0.7) EPD	18 Mo Ind:	109

Lot 76 VVCR New Ledger 2225 DH

{	New Standard 8744 (Polled)	{	M6 New Standard 842 (Polled)
	VVCR Ledger Primed 5588 Dam Age 7 (Polled)		BHC Genie 32 of 016 FL (Polled)
		{	LT Ledger 348 (Polled)
			VVCR Primed Unlimited 1783 (Polled)

Tag:	2225	WWt:	724
Born:	4/20/22	WInd:	110
BW:	86(-4.8) EPD	18 Mo Ind:	109

Lot 77 VVCR Ledger Wyoming 2259 Polled

{	LT Ledger 7404 (Polled)	{	LT Ledger 0332 (Polled)
	VVCR Wyo Gridmaker 4759 Dam Age 8 (Polled)		LT Brenda 3307 (Polled)
		{	Prime Wind 940 (Polled)
			VVCR Gridmaker Sure 8803 (Polled)

Tag:	2259	WWt:	724
Born:	4/29/22	WInd:	110
BW:	86(-2.5) EPD	18 Mo Ind:	109

Lot 78 VVCR Ledger Primed 2247 Polled

{	LT Ledger 7404 (Polled)	{	LT Ledger 0332 (Polled)
	VVCR Primed Whitehot 9705 Dam Age 13 (Polled)		LT Brenda 3307 (Polled)
		{	LT Primed 3288 (Polled)
			VVCR Whitehot Mac 5704 (Polled)

Tag:	2247	WWt:	721
Born:	4/24/22	WInd:	110
BW:	87(-3.3) EPD	18 Mo Ind:	109

Lot 79 VVCR Power Ledger 2141 Polled

{	VVCR Power Bingo 6104 (Polled)	{	VVCR Bingo Line 2203 (Polled)
	VVCR Ledger Colt 0689 Dam Age Hfr (Polled)		VVCR New Gridmaker 4733 (Polled)
		{	LT Ledger 348 (Polled)
			VVCR Colt 45 Primed 4843 (Polled)

Tag:	2141	WWt:	702
Born:	4/8/22	WInd:	108
BW:	85(-2.8) EPD	18 Mo Ind:	109

Lot 80 VVCR Mountain Ledger 2217 DH

{	WC Mountain Man 9015 (Polled)	{	LT Rushmore 8060 (Polled)
	VVCR Ledger Whitehot 9583 Dam Age 3 (Polled)		WC Pearl 7013 (Polled)
		{	LT Ledger 4595 (Polled)
			VVCR Whitehot Tradition 6758 (Polled)

Tag:	2217	WWt:	724
Born:	4/20/22	WInd:	111
BW:	81(-2.5) EPD	18 Mo Ind:	109

Lot 81 VVCR Sundance Ledger 2276 Polled/S

{	LT Sundance 6137 (Polled)	{	LT Sundance 2251 (Polled)
	VVCR Ledger Bingo 5544 Dam Age 7 (Polled)		LT Rhinestone 3030 (Polled)
{		{	LT Ledger 348 (Polled)
			VVCR Bingo Gridmaker 1733 (Polled)

Tag: 2276	WWt: 722
Born: 5/7/22	WInd: 110
BW: 86(-0.9) EPD	18 Mo Ind: 109

Lot 82 VVCR Magnum Gridmaker 2166 Polled

{	WC Magnum 9805 (Polled)	{	WC Milestone 5223 (Polled)
	VVCR Gridmaker Primed 9584 Dam Age 3 (Polled)		WC Dream Girl 6243 (Polled)
{		{	Gridmaker 627 (Polled)
			VVCR Primed Whitehot 7774 (Polled)

Tag: 2166	WWt: 718
Born: 4/12/22	WInd: 109
BW: 86(-0.7) EPD	18 Mo Ind: 108

Lot 83 VVCR Mountain Ledger 2289 Polled

{	WC Mountain Man 9015 (Polled)	{	LT Rushmore 8060 (Polled)
	VVCR Ledger Wind 9555 Dam Age 3 (Polled)		WC Pearl 7013 (Polled)
{		{	LT Ledger 4595 (Polled)
			VVCR Windy Whitehot 4863 (Polled)

Tag: 2289	WWt: 715
Born: 5/12/22	WInd: 109
BW: 87(-2.9) EPD	18 Mo Ind: 108

Lot 84 VVCR Free Bingo 2279 Polled/B

{	Free Lunch 859 (Polled)	{	VPI Free Lunch 708 (Polled)
	VVCR Bingo Gridmaker 0721 Dam Age 12 (Polled)		Fink Ms Grade Now 3844 (Polled)
{		{	VVCR Bingo Whitehot 7127 (Polled)
			VVCR Gridmaker Wyoming 8792 (Polled)

Tag: 2279	WWt: 720
Born: 5/9/22	WInd: 110
BW: 87(-4.3) EPD	18 Mo Ind: 108

Lot 85 VVCR Resource Distance 2175 Polled

{	CCC Resource 9022 (Polled)	{	WC Resource 417 (Polled)
	VVCR Distance Ledger 8571 Dam Age 4 (Polled)		CCC MS Blue Bud 502 (Polled)
{		{	LT Distance 5200 (Polled)
			VVCR Ledger Bingo 5544 (Polled)

Tag: 2175	WWt: 715
Born: 4/14/22	WInd: 109
BW: 85(-2.9) EPD	18 Mo Ind: 108

Lot 86 VVCR Gridmaker New 2245 Polled

{	Gridmaker 627 (Polled)	{	M6 Grid Maker 104 (Polled)
	VVCR New Primed 4861 Dam Age 8 (Polled)		WC Blue Dutchess 9029 (Polled)
{		{	New Standard 107 (Polled)
			VVCR Primed Whitehot 8796 (Polled)

Tag: 2245	WWt: 712
Born: 4/24/22	WInd: 109
BW: 87(-2.6) EPD	18 Mo Ind: 108

Lot 87 VVCR New Gridmaker 2207 Polled

{	New Standard 8744 (Polled)	{	M6 New Standard 842 (Polled)
	VVCR Gridmaker Wyo 5606 Dam Age 7 (Polled)		BHC Genie 32 of 016 FL (Polled)
{		{	Gridmaker 2871 (Polled)
			VVCR Wyoming Congress 3725 (Polled)

Tag: 2207	WWt: 716
Born: 4/18/22	WInd: 109
BW: 85(-2.1) EPD	18 Mo Ind: 108

Lot 88 VVCR Sundance Payweight 2282 Polled/S

{	LT Sundance 6137 (Polled)	{	LT Sundance 2251 (Polled)
	VVCR Payweight Thick 3727 Dam Age 9 (Polled)		LT Rhinestone 3030 (Polled)
{		{	Payweight 635 (Polled)
			VVCR Thick Wyoming 8881 (Polled)

Tag: 2282	WWt: 715
Born: 5/10/22	WInd: 109
BW: 88(-0.7) EPD	18 Mo Ind: 108

Lot 97 VVCR Patriot Free 2160 Polled

{	GHC Patriot 9611 (Polled)	{	LT Patriot 4004 (Polled)
	VVCR Free Gridmaker 7605 Dam Age 5 (Polled)		LT Brenda 8034 (Polled)
		{	Free Lunch FC 4208 (Polled)
			VVCR Gridmaker Leading 4727 (Polled)

Tag:	2160	WWt:	710
Born:	4/10/22	WInd:	109
BW:	85(-3.9) EPD	18 Mo Ind:	108

Lot 98 VVCR Sundance Primed 2223 Polled

{	LT Sundance 6137 (Polled)	{	LT Sundance 2251 (Polled)
	VVCR Primed Wyoming 9769 Dam Age 13 (Polled)		LT Rhinestone 3030 (Polled)
		{	LT Primed 3288 (Polled)
			VVCR Wyoming Bingo 5726 (Polled)

Tag:	2223	WWt:	704
Born:	4/20/22	WInd:	108
BW:	87(-2.5) EPD	18 Mo Ind:	108

Lot 99 VVCR Resource New 2221 Polled

{	CCC Resource 9022 (Polled)	{	WC Resource 417 (Polled)
	VVCR New Payweight 8606 Dam Age 4 (Polled)		CCC MS Blue Bud 502 (Polled)
		{	New Standard 2849 (Polled)
			VVCR Payweight Gridmaker 3715 (Polled)

Tag:	2221	WWt:	695
Born:	4/20/22	WInd:	107
BW:	82(-3.4) EPD	18 Mo Ind:	107

Lot 100 VVCR Milestone Hi Yield 2177 Polled

{	WC GHC Milestone 9561 (Polled)	{	WC Milestone 5223 (Polled)
	VVCR Hi Yield GridMaker 3708 Dam Age 9 (Polled)		WC Dream Girl 6243 (Polled)
		{	VVCR Hi Yield Thick 9188 (Polled)
			VVCR GridMaker Wyoming 8709 (Polled)

Tag:	2177	WWt:	697
Born:	4/14/22	WInd:	107
BW:	87(-0.7) EPD	18 Mo Ind:	107

Lot 101 VVCR Magnum Gridmaker 2252 Polled

{	WC Magnum 9805 (Polled)	{	WC Milestone 5223 (Polled)
	VVCR Gridmaker Wyoming 9531 Dam Age 3 (Polled)		WC Dream Girl 6243 (Polled)
		{	Gridmaker 627 (Polled)
			VVCR Wyoming Super 5844 (Polled)

Tag:	2252	WWt:	706
Born:	4/27/22	WInd:	108
BW:	87(-1.8) EPD	18 Mo Ind:	107

Lot 102 VVCR Mountain Network 2171 Polled

{	WC Mountain Man 9015 (Polled)	{	LT Rushmore 8060 (Polled)
	VVCR Network Choice 9546 Dam Age 3 (Polled)		WC Pearl 7013 (Polled)
		{	WC CCC Network 6182 (Polled)
			VVCR Long Prime 6629 (Polled)

Tag:	2171	WWt:	702
Born:	4/13/22	WInd:	107
BW:	80(-3.9) EPD	18 Mo Ind:	107

Lot 103 VVCR Distance Ledger 2228 Polled

{	LT Distance 5200 (Polled)	{	LT Silver Distance 5342 (Polled)
	VVCR Ledger Payweight 8547 Dam Age 4 (Polled)		LT Graceful 8012
		{	Ledger 4595 (Polled)
			VVCR Payweight Whitehot 2776 (Polled)

Tag:	2228	WWt:	698
Born:	4/21/22	WInd:	107
BW:	87(-2.8) EPD	18 Mo Ind:	107

Lot 104 VVCR New Choice 2103 Polled

{	New Standard 8744 (Polled)	{	M6 New Standard 842 (Polled)
	VVCR Choice Bingo 5579 Dam Age 7 (Polled)		BHC Genie 32 of 016 FL (Polled)
		{	Long Choice 2069 (Polled)
			VVCR Bingo Wyo 0725 (Polled)

Tag:	2103	WWt:	695
Born:	4/2/24	WInd:	106
BW:	86(-3.5) EPD	18 Mo Ind:	107

Lot 105 VVCR Anchor Valued 2278 Polled

{	WC GH Anchor 6516 (Polled)	{	LT Rushmore 8060 (Polled)
	VVCR Valued Thick 7653 Dam Age 5 (Polled)		WC Clarice 2214 (Polled)
		{	LT Value Added 1016 (Polled)
			VVCR Thick Wyoming 8881 (Polled)

Tag: 2278	WWt: 693
Born: 5/9/22	WInd: 106
BW: 86(-2.2) EPD	18 Mo Ind: 107

Lot 106 VVCR Mountain Free 2200 Polled

{	WC Mountain Man 9015 (Polled)	{	LT Rushmore 8060 (Polled)
	VVCR Free Gridmaker 9630 Dam Age 3 (Polled)		WC Pearl 7013 (Polled)
		{	Free Lunch FC 5652 (Polled)
			VVCR Gridmaker Whitehot 1727 (Polled)

Tag: 2200	WWt: 690
Born: 4/17/22	WInd: 106
BW: 78(-2.4) EPD	18 Mo Ind: 107

Lot 107 VVCR Mountain Ledger 2189 Polled

{	WC Mountain Man 9015 (Polled)	{	LT Rushmore 8060 (Polled)
	VVCR Ledger Wind 9646 Dam Age 3 (Polled)		WC Pearl 7013 (Polled)
		{	LT Ledger 7404 (Polled)
			VVCR Windy Wyoming 2736 (Polled)

Tag: 2189	WWt: 694
Born: 4/16/22	WInd: 107
BW: 85(-3.1) EPD	18 Mo Ind: 107

Lot 108 VVCR Magnum Anchor 2253 Polled

{	WC Magnum 9805 (Polled)	{	WC Milestone 5223 (Polled)
	VVCR Anchor Wyoming 9557 Dam Age 3 (Polled)		WC Dream Girl 6243 (Polled)
		{	WC Anchor 6516 (Polled)
			VVCR Wyoming Prime 5531 (Polled)

Tag: 2253	WWt: 697
Born: 4/27/22	WInd: 107
BW: 87(-1.0) EPD	18 Mo Ind: 107

Lot 109 VVCR Free Value 2305 Polled

{	Free Lunch 041 (Polled)	{	VPI Free Lunch 708 (Polled)
	VVCR Value Wyo 4799 Dam Age 8 (Polled)		Finks Lady 6299 2682 GS (Polled)
		{	LT Value Added 1016 (Polled)
			VVCR Wyoming Line 6856 (Polled)

Tag: 2305	WWt: 700
Born: 5/20/24	WInd: 107
BW: 85(-2.7) EPD	18 Mo Ind: 107

Lot 110 VVCR Power Venture 2125 Polled

{	VVCR Power Bingo 6104 (Polled)	{	VVCR Bingo Line 2203 (Polled)
	VVCR Venture Long 0623 Dam Age Hfr (Polled)		VVCR New Gridmaker 4733 (Polled)
		{	LT Venture 6918 (Polled)
			VVCR Long Prime 7575 (Polled)

Tag: 2125	WWt: 680 Hfr
Born: 4/5/22	WInd: 104
BW: 84(-3.8) EPD	18 Mo Ind: 107

Lot 111 VVCR Power Wyoming 2296 Polled

{	VVCR Power Bingo 6104 (Polled)	{	VVCR Bingo Line 2203 (Polled)
	VVCR Wyoming Primed 8744 Dam Age 14 (Polled)		VVCR New Gridmaker 4733 (Polled)
		{	LT Primed 3288 (Polled)
			VVCR Wyoming Bingo 1665 (Polled)

Tag: 2296	WWt: 688 Hfr
Born: 5/17/24	WInd: 105
BW: 85(-3.6) EPD	18 Mo Ind: 107

Lot 112 VVCR Free Stacked 2227 Polled

{	Free Lunch 859 (Polled)	{	VPI Free Lunch 708 (Polled)
	VVCR Stacked Wyo Line 6550 Dam Age 6 (Polled)		Fink Ms Grade Now 3844 (Polled)
		{	WC Stacked Value 3566 (Polled)
			VVCR Wyo Line 3729 (Polled)

Tag: 2227	WWt: 703
Born: 4/21/22	WInd: 107
BW: 86(-3.5) EPD	18 Mo Ind: 107

Lot 113 VVCR New Gridmaker 2237 Polled

{ New Standard 8744 (Polled)
VVCR Gridmaker Prime 1870 Dam Age 11 (Polled)

{ M6 New Standard 842 (Polled)
BHC Genie 32 of 016 FL (Polled)
Gridmaker 817 (Polled)
VVCR Prime Sure 6757 (Polled)

Tag: 2237 **WWt:** 697
Born: 4/22/22 **WInd:** 106
BW: 88(-2.2) EPD **18 Mo Ind:** 107

Lot 114 VVCR Ledger Sundance 2165 Polled

{ WC Ledger 5657 (Polled)
VVCR Sundance Gridmaker 8638 Dam Age 4 (Polled)

{ LT Ledger 0332 (Polled)
SCC Miss 3027 (Polled)
LT Sundance 6137 (Polled)
VVCR Gridmaker Wyo 9751 (Polled)

Tag: 2165 **WWt:** 698
Born: 4/11/22 **WInd:** 106
BW: 85(-1.4) EPD **18 Mo Ind:** 107

Lot 115 VVCR Anchor Value 2277 Polled

{ WC GH Anchor 6516 (Polled)
VVCR Value Gridmaker 6514 Dam Age 6 (Polled)

{ LT Rushmore 8060 (Polled)
WC Clarice 2214 (Polled)
LT Value Added 1016 (Polled)
VVCR Gridmaker Sure 2779 (Polled)

Tag: 2277 **WWt:** 695
Born: 5/8/22 **WInd:** 106
BW: 86(-3.3) EPD **18 Mo Ind:** 106

Lot 116 VVCR Free Prime 2306 Polled

{ Free Lunch 041 (Polled)
VVCR Prime Wind 3792 Dam Age 9 (Polled)

{ VPI Free Lunch 708 (Polled)
Finks Lady 6299 2682 GS (Polled)
LT Primed 3288 (Polled)
VVCR Wyoming Line 0812 (Polled)

Tag: 2306 **WWt:** 696
Born: 5/20/24 **WInd:** 106
BW: 87(-1.5) EPD **18 Mo Ind:** 106

Lot 117 VVCR New Bingo 2231 Polled

{ New Standard 8744 (Polled)
VVCR Bingo Tradition 4754 Dam Age 8 (Polled)

{ M6 New Standard 842 (Polled)
BHC Genie 32 of 016 FL (Polled)
VVCR Bingo Line 2203 (Polled)
VVCR Tradition Wyoming 2714 (Polled)

Tag: 2231 **WWt:** 701
Born: 4/21/22 **WInd:** 107
BW: 86(-3.8) EPD **18 Mo Ind:** 106

Lot 118 VVCR Resource Stacked 2190 Polled

{ CCC Resource 9022 (Polled)
VVCR Stacked Value 8553 Dam Age 4 (Polled)

{ WC Resource 417 (Polled)
CCC MS Blue Bud 502 (Polled)
WC Stacked Value 3566 (Polled)
VVCR Value Blue 4859 (Polled)

Tag: 2190 **WWt:** 692
Born: 4/16/22 **WInd:** 106
BW: 85(-3.3) EPD **18 Mo Ind:** 106

Lot 119 VVCR Milestone Gridmaker 2286 Polled

{ WC GHC Milestone 9561 (Polled)
VVCR Gridmaker Unlimited 1854 Dam Age 11 (Polled)

{ WC Milestone 5223 (Polled)
WC Dream Girl 6243 (Polled)
Gridmaker 4110 (Polled)
VVCR Unlimited Chaps 3560 (Polled)

Tag: 2286 **WWt:** 702
Born: 5/12/22 **WInd:** 107
BW: 90(-2.0) EPD **18 Mo Ind:** 106

Lot 120 VVCR New Primed 2214 Polled

{ New Standard 8744 (Polled)
VVCR Primed GridMaker 4836 Dam Age 8 (Polled)

{ M6 New Standard 842 (Polled)
BHC Genie 32 of 016 FL (Polled)
LT Primed 3288 (Polled)
VVCR GridMaker Wyoming 9779 (Polled)

Tag: 2214 **WWt:** 698
Born: 4/19/22 **WInd:** 107
BW: 88(-3.1) EPD **18 Mo Ind:** 106

Lot 121 VVCR Patriot Valued 2202 Polled

{	GHC Patriot 0126 (Polled)	{	LT Patriot 4004 (Polled)
	VVCR Valued Gridmaker 8501 Dam Age 4 (Polled)		LT Liberty 9293 (Polled)
		{	LT Value Added 1016 (Polled)
			VVCR Gridmaker Whitehot 1830 (Polled)
Tag:	2202	WWt:	695
Born:	4/17/22	WInd:	106
BW:	86(-2.1) EPD	18 Mo Ind:	106

Lot 122 VVCR Mountain Stacked 2174 Polled

{	WC Mountain Man 9015 (Polled)	{	LT Rushmore 8060 (Polled)
	VVCR Stacked Bingo 9589 Dam Age 3 (Polled)		WC Pearl 7013 (Polled)
		{	WC Stacked Value 3566 (Polled)
			VVCR Bingo Wyoming 0725 (Polled)
Tag:	2174	WWt:	690
Born:	4/14/22	WInd:	106
BW:	84(-4.5) EPD	18 Mo Ind:	106

Lot 123 VVCR Resource Free 2248 Polled

{	CCC Resource 9022 (Polled)	{	WC Resource 417 (Polled)
	VVCR Free Whitehot 8565 Dam Age 4 (Polled)		CCC MS Blue Bud 502 (Polled)
		{	Free Lunch FC 4208 (Polled)
			VVCR Whitehot Bingo 5765 (Polled)
Tag:	2248	WWt:	690
Born:	4/24/22	WInd:	106
BW:	86(-3.4) EPD	18 Mo Ind:	106

Lot 124 VVCR Gridmaker Line 2147 Polled

{	Gridmaker 627 (Polled)	{	M6 Grid Maker 104 (Polled)
	VVCR Gridmaker Payweight 6539 Dam Age 6 (Polled)		WC Blue Dutchess 9029 (Polled)
		{	Gridmaker 2871 (Polled)
			VVCR Payweight Bingo 1730 (Polled)
Tag:	2147	WWt:	689
Born:	4/9/22	WInd:	105
BW:	86(-2.4) EPD	18 Mo Ind:	106

Lot 125 VVCR Ledger Line 2294 Polled

{	WC Ledger 5657 (Polled)	{	LT Ledger 0332 (Polled)
	VVCR Ledger Bingo 7587 Dam Age 5 (Polled)		SCC Miss 3027 (Polled)
		{	WC Ledger 4595 (Polled)
			VVCR Bingo Line Whitehot 0711 (Polled)
Tag:	2294	WWt:	693
Born:	5/17/22	WInd:	106
BW:	85(-1.6) EPD	18 Mo Ind:	106

Lot 126 VVCR Sundance New 2256 Polled

{	LT Sundance 6137 (Polled)	{	LT Sundance 2251 (Polled)
	VVCR New Payweight 7578 Dam Age 5 (Polled)		LT Rhinestone 3030 (Polled)
		{	New Standard 2851 (Polled)
			VVCR Payweight Whitehot 2776 (Polled)
Tag:	2256	WWt:	690
Born:	4/28/22	WInd:	106
BW:	87(-1.2) EPD	18 Mo Ind:	106

Lot 127 VVCR Patriot Wyoming 2281 Polled

{	GHC Patriot 0126 (Polled)	{	LT Patriot 4004 (Polled)
	VVCR Wyoming Easy 8646 Dam Age 4 (Polled)		LT Liberty 9293 (Polled)
		{	LT Wind 5494 (Polled)
			VVCR Easy Wyoming 2720 (Polled)
Tag:	2281	WWt:	688
Born:	5/10/22	WInd:	105
BW:	87(-3.2) EPD	18 Mo Ind:	106

Lot 128 VVCR Mountain Response 2158 Polled

{	WC Mountain Man 9015 (Polled)	{	LT Rushmore 8060 (Polled)
	VVCR Response Gridmaker 9615 Dam Age 3 (Polled)		WC Pearl 7013 (Polled)
		{	WC Response 7322 (Polled)
			VVCR Gridmaker Wyoming 1760 (Polled)
Tag:	2158	WWt:	685
Born:	4/10/22	WInd:	105
BW:	83(-3.6) EPD	18 Mo Ind:	105

Lot 129 VVCR Patriot Ledger 2159 Polled

{	GHC Patriot 9611 (Polled)	{	LT Patriot 4004 (Polled)
			LT Brenda 8034 (Polled)
{	VVCR Ledger Gridmaker 7651 Dam Age 5 (Polled)	{	WC Ledger 4595 (Polled)
			VVCR Gridmaker Prime 1870 (Polled)

Tag:	2159	WWt:	687
Born:	4/10/22	WInd:	105
BW:	86(-2.1) EPD	18 Mo Ind:	105

Lot 130 VVCR Anchor Ledger 2263 Polled

{	WC GH Anchor 6516 (Polled)	{	LT Rushmore 8060 (Polled)
			WC Clarice 2214 (Polled)
{	VVCR Ledger Whitehot 7573 Dam Age 5 (Polled)	{	Ledger 4595 (Polled)
			VVCR Whitehot Tundra 5754 (Polled)

Tag:	2263	WWt:	690
Born:	4/29/22	WInd:	106
BW:	88(-2.5) EPD	18 Mo Ind:	105

Lot 131 VVCR Sundance Bingo 2255 Polled

{	LT Sundance 6137 (Polled)	{	LT Sundance 2251 (Polled)
			LT Rhinestone 3030 (Polled)
{	VVCR Bingo Tradition 3761 Dam Age 9 (Polled)	{	VVCR Tradition Bingo 3205 (Polled)
			VVCR Tradition Wyoming 8714 (Polled)

Tag:	2255	WWt:	688
Born:	4/28/22	WInd:	105
BW:	88(-2.0) EPD	18 Mo Ind:	105

Lot 132 VVCR Mountain Ledger 2312 Polled

{	WC Mountain Man 9015 (Polled)	{	LT Rushmore 8060 (Polled)
			WC Pearl 7013 (Polled)
{	VVCR Ledger Blue 9587 Dam Age 3 (Polled)	{	LT Ledger 7404 (Polled)
			VVCR Blue Bingo 4822 (Polled)

Tag:	2312	WWt:	683
Born:	5/24/24	WInd:	104
BW:	87(-3.1) EPD	18 Mo Ind:	105

Lot 133 VVCR Ledger Stacked 2307 Polled/B

{	WC Ledger 5657 (Polled)	{	LT Ledger 0332 (Polled)
			SCC Miss 3027 (Polled)
{	VVCR Stacked Bluegrass 9652 Dam Age 3 (Polled)	{	WC Stacked Value 3566 (Polled)
			VVCR Bluegrass Wyoming 2819 (Polled)

Tag:	2307	WWt:	686
Born:	5/21/24	WInd:	105
BW:	86(-1.7) EPD	18 Mo Ind:	105

Lot 134 VVCR Magnum Anchor 2300 Polled

{	WC Magnum 9805 (Polled)	{	WC Milestone 5223 (Polled)
			WC Dream Girl 6243 (Polled)
{	VVCR Anchor Wyoming 9592 Dam Age 3 (Polled)	{	WC Anchor 6516 (Polled)
			VVCR Wyoming Leading 6516 (Polled)

Tag:	2300	WWt:	685
Born:	5/19/24	WInd:	105
BW:	84(-2.2) EPD	18 Mo Ind:	105

Lot 135 VVCR Patriot Wyoming 2249 Polled

{	GHC Patriot 0126 (Polled)	{	LT Patriot 4004 (Polled)
			LT Liberty 9293 (Polled)
{	VVCR Wyoming Thick 8576 Dam Age 4 (Polled)	{	LT Wind 5494 (Polled)
			VVCR Thick Unlimited 7718 (Polled)

Tag:	2249	WWt:	690
Born:	4/25/22	WInd:	105
BW:	87(-1.8) EPD	18 Mo Ind:	105

Lot 136 VVCR Ledger Line 2246 Polled

{	LT Ledger 7404 (Polled)	{	LT Ledger 0332 (Polled)
			LT Brenda 3307 (Polled)
{	VVCR Ledger Whitehot 8622 Dam Age 4 (Polled)	{	LT Ledger 348 (Polled)
			VVCR Whitehot Mac 7843 (Polled)

Tag:	2246	WWt:	684
Born:	4/24/22	WInd:	104
BW:	85(-3.1) EPD	18 Mo Ind:	105

Lot 137 VVCR Milestone Tradition 2243 Polled

{	WC GHC Milestone 9561 (Polled)	{	WC Milestone 5223 (Polled)
			WC Dream Girl 6243 (Polled)
{	VVCR Tradition Whitehot 2748 Dam Age 10 (Polled)	{	VVCR Tradition Bingo 3205 (Polled)
			VVCR Whitehot Bingo 5765 (Polled)
Tag:	2243	WWt:	687
Born:	4/23/22	WInd:	105
BW:	86(-3.2) EPD	18 Mo Ind:	105

Lot 138 VVCR Ledger New 2119 Polled

{	LT Ledger 7404 (Polled)	{	LT Ledger 0332 (Polled)
			LT Brenda 3307 (Polled)
{	VVCR New Standard Wyo 8515 Dam Age 4 (Polled)	{	New Standard 2849 (Polled)
			VVCR New Standard Wyoming3793 (Polled)
Tag:	2119	WWt:	685
Born:	4/4/22	WInd:	105
BW:	86(-2.9) EPD	18 Mo Ind:	105

Lot 139 VVCR Milestone Tradition 2285 Polled

{	WC GHC Milestone 9561 (Polled)	{	WC Milestone 5223 (Polled)
			WC Dream Girl 6243 (Polled)
{	VVCR Easy Tradition 2833 Dam Age 10 (Polled)	{	LT Easy Trace 9040 (Polled)
			VVCR Tradition HiYield 9814 (Polled)
Tag:	2285	WWt:	688
Born:	5/12/22	WInd:	105
BW:	86(-1.8) EPD	18 Mo Ind:	105

Lot 140 VVCR Patriot Bluegrass 2181 Polled

{	GHC Patriot 9611 (Polled)	{	LT Patriot 4004 (Polled)
			LT Brenda 8034 (Polled)
{	VVCR Bluegrass Payweight 5516 Dam Age 7 (Polled)	{	Bluegrass 1007 (Polled)
			VVCR Payweight Mac 0839 (Polled)
Tag:	2181	WWt:	689
Born:	4/14/22	WInd:	105
BW:	85(-3.1) EPD	18 Mo Ind:	105

Lot 141 VVCR Distance Line 2104 Polled

{	LT Distance 5200 (Polled)	{	LT Silver Distance 5342 (Polled)
			LT Graceful 8012
{	VVCR Distance Primed 8540 Dam Age 4 (Polled)	{	LT Distance 5200 (Polled)
			VVCR Primed Bingo 5534 (Polled)
Tag:	2104	WWt:	684
Born:	4/2/24	WInd:	105
BW:	78(-4.2) EPD	18 Mo Ind:	104

Lot 142 VVCR Ledger Line 2184 Polled

{	LT Ledger 7404 (Polled)	{	LT Ledger 0332 (Polled)
			LT Brenda 3307 (Polled)
{	VVCR Ledger Bingo 8642 Dam Age 4 (Polled)	{	LT Ledger 348 (Polled)
			VVCR Bingo Gridmaker 0825 (Polled)
Tag:	2184	WWt:	687
Born:	4/15/22	WInd:	105
BW:	86(-2.6) EPD	18 Mo Ind:	104

Lot 143 VVCR Gridmaker Tradition 2196 Polled

{	Gridmaker 627 (Polled)	{	M6 Grid Maker 104 (Polled)
			WC Blue Dutchess 9029 (Polled)
{	VVCR Tradition Gridmaker 9795 Dam Age 12 (Polled)	{	VVCR Tradition Bingo 3205 (Polled)
			VVCR Gridmaker Prime 7762 (Polled)
Tag:	2196	WWt:	686
Born:	4/17/22	WInd:	105
BW:	87(-2.8) EPD	18 Mo Ind:	104

Lot 144 VVCR Patriot Leading 2182 Polled

{	GHC Patriot 9611 (Polled)	{	LT Patriot 4004 (Polled)
			LT Brenda 8034 (Polled)
{	VVCR Leading Tundra 9860 Dam Age 13 (Polled)	{	LT Leading Wind 7169 (Polled)
			VVCR Tundra Bingo 2584 (Polled)
Tag:	2182	WWt:	681
Born:	4/15/22	WInd:	104
BW:	85(-3.6) EPD	18 Mo Ind:	104

Lot 145 VVCR Magnum Gridmaker 2258 Polled

{	WC Magnum 9805 (Polled)	{	WC Milestone 5223 (Polled)
	VVCR Gridmaker Primed 9569 Dam Age 3 (Polled)		WC Dream Girl 6243 (Polled)
		{	Gridmaker 627 (Polled)
			VVCR Primed Whitehot 8796 (Polled)

Tag:	2258	WWt:	687
Born:	4/29/22	WInd:	105
BW:	86(-2.1) EPD	18 Mo Ind:	104

Lot 146 VVCR Free Primed 2240 Polled

{	Free Lunch 859 (Polled)	{	VPI Free Lunch 708 (Polled)
	VVCR Primed Hi Yield 2763 Dam Age 10 (Polled)		Fink Ms Grade Now 3844 (Polled)
		{	LT Primed 3288 (Polled)
			VVCR Hi Yield Tradition 7716 (Polled)

Tag:	2240	WWt:	685
Born:	4/23/22	WInd:	105
BW:	87(-4.8) EPD	18 Mo Ind:	104

Lot 147 VVCR Free Payweight 2297 Polled

{	Free Lunch 041 (Polled)	{	VPI Free Lunch 708 (Polled)
	VVCR Payweight Prime 0853 Dam Age 12 (Polled)		Finks Lady 6299 2682 GS (Polled)
		{	Payweight 635 (Polled)
			VVCR Prime Unlimited 5778 (Polled)

Tag:	2297	WWt:	686
Born:	5/17/24	WInd:	105
BW:	88(-1.3) EPD	18 Mo Ind:	104

Lot 148 VVCR Distance Colt 2236 Polled

{	LT Distance 5200 (Polled)	{	LT Silver Distance 5342 (Polled)
	VVCR Colt 45 New 8591 Dam Age 4 (Polled)		LT Graceful 8012
		{	WC Colt 45 249Z (Polled)
			VVCR New Tradition 4716 (Polled)

Tag:	2236	WWt:	679
Born:	4/22/22	WInd:	104
BW:	84(-3.3) EPD	18 Mo Ind:	104

Lot 149 VVCR Resource Power 2134 Polled

{	CCC Resource 9022 (Polled)	{	WC Resource 417 (Polled)
	VVCR Power Bingo Value 8505 Dam Age 4 (Polled)		CCC MS Blue Bud 502 (Polled)
		{	VVCR Power Bingo 6104 (Polled)
			VVCR Value Gridmaker 2732 (Polled)

Tag:	2134	WWt:	684
Born:	4/7/22	WInd:	104
BW:	84(-2.8) EPD	18 Mo Ind:	104

Lot 150 VVCR New Value 2198 Polled

{	New Standard 8744 (Polled)	{	M6 New Standard 842 (Polled)
	VVCR Value Tradition 6586 Dam Age 6 (Polled)		BHC Genie 32 of 016 FL (Polled)
		{	LT Value Added 1016 (Polled)
			VVCR Tradition Wyoming 2899 (Polled)

Tag:	2198	WWt:	683
Born:	4/17/22	WInd:	104
BW:	86(-3.2) EPD	18 Mo Ind:	104

Lot 151 VVCR Patriot Ledger 2260 Polled

{	GHC Patriot 9611 (Polled)	{	LT Patriot 4004 (Polled)
	VVCR Ledger Tradition 6647 Dam Age 6 (Polled)		LT Brenda 8034 (Polled)
		{	LT Ledger 348 (Polled)
			VVCR Tradition Gridmaker 9795 (Polled)

Tag:	2260	WWt:	682
Born:	4/29/22	WInd:	104
BW:	86(-3.2) EPD	18 Mo Ind:	104

Lot 152 VVCR Free Wyoming 2298 Polled

{	Free Lunch 041 (Polled)	{	VPI Free Lunch 708 (Polled)
	VVCR Wyoming Leading 6516 Dam Age 6 (Polled)		Finks Lady 6299 2682 GS (Polled)
		{	LT Wyoming Prime 933 (Polled)
			VVCR Leading Whitehot 1809 (Polled)

Tag:	2298	WWt:	685
Born:	5/18/22	WInd:	105
BW:	85(-1.9) EPD	18 Mo Ind:	104

Lot 161 VVCR Mountain Network 2310 DH

{	WC Mountain Man 9015 (Polled)	{	LT Rushmore 8060 (Polled)
	VVCR Network Wind 9547 Dam Age 3 (Polled)	{	WC Pearl 7013 (Polled)
		{	WC CCC Network 6182 (Polled)
		{	VVCR Windy Gridmaker 6653 (Polled)

Tag: 2310 **WWt:** 670
Born: 5/24/24 **WInd:** 103
BW: 80(-2.9) EPD **18 Mo Ind:** 103

Lot 162 VVCR Distance Line 2127 Polled

{	LT Distance 5200 (Polled)	{	LT Silver Distance 5342 (Polled)
	VVCR Distance Wyoming 8672 Dam Age 4 (Polled)	{	LT Graceful 8012
		{	LT Distance 5200 (Polled)
		{	VVCR Wyoming Prime 5510 (Polled)

Tag: 2127 **WWt:** 673
Born: 4/5/22 **WInd:** 103
BW: 81(-3.2) EPD **18 Mo Ind:** 103

Lot 163 VVCR Power New 2185 Polled

{	VVCR Power Bingo 6104 (Polled)	{	VVCR Bingo Line 2203 (Polled)
	VVCR New Prime 0605 Dam Age Hfr (Polled)	{	VVCR New Gridmaker 4733 (Polled)
		{	New Standard 2849 (Polled)
		{	VVCR Primed Whitehot 2822 (Polled)

Tag: 2185 **WWt:** 675 Hfr
Born: 4/15/22 **WInd:** 103
BW: 80(-2.8) EPD **18 Mo Ind:** 103

Lot 164 VVCR Power Gridmaker 2204 Polled/S

{	VVCR Power Bingo 6104 (Polled)	{	VVCR Bingo Line 2203 (Polled)
	VVCR Gridmaker Line 0667 Dam Age Hfr (Polled)	{	VVCR New Gridmaker 4733 (Polled)
		{	Gridmaker 622 (Polled)
		{	VVCR Gridmaker Ultra 9773 (Polled)

Tag: 2204 **WWt:** 672 Hfr
Born: 4/18/22 **WInd:** 103
BW: 79(-3.7) EPD **18 Mo Ind:** 103

Lot 165 VVCR Gridmaker Line 2268 Polled

{	Gridmaker 627 (Polled)	{	M6 Grid Maker 104 (Polled)
	VVCR Gridmaker Wyoming 1760 Dam Age 11 (Polled)	{	WC Blue Dutchess 9029 (Polled)
		{	Gridmaker 817 (Polled)
		{	VVCR Wyoming Tundra 2524 (Polled)

Tag: 2268 **WWt:** 678
Born: 5/1/22 **WInd:** 103
BW: 87(-3.0) EPD **18 Mo Ind:** 103

Lot 166 VVCR New Bluegrass 2120 Polled

{	New Standard 8744 (Polled)	{	M6 New Standard 842 (Polled)
	VVCR Bluegrass Leader 5535 Dam Age 7 (Polled)	{	BHC Genie 32 of 016 FL (Polled)
		{	Bluegrass 1007 (Polled)
		{	VVCR Leading Sure 0794 (Polled)

Tag: 2120 **WWt:** 675
Born: 4/4/22 **WInd:** 103
BW: 84(-2.1) EPD **18 Mo Ind:** 103

Lot 167 VVCR Free Payweight 2309 Polled

{	Free Lunch 041 (Polled)	{	VPI Free Lunch 708 (Polled)
	VVCR Payweight Whitehot 2776 Dam Age 10 (Polled)	{	Finks Lady 6299 2682 GS (Polled)
		{	Payweight 635 (Polled)
		{	VVCR Whitehot Mac 5704 (Polled)

Tag: 2309 **WWt:** 677
Born: 5/24/24 **WInd:** 103
BW: 87(-1.5) EPD **18 Mo Ind:** 103

Lot 168 VVCR Free Hi Yield 2295 Polled

{	Free Lunch 859 (Polled)	{	VPI Free Lunch 708 (Polled)
	VVCR Hi Yield Tundra 1758 Dam Age 11 (Polled)	{	Fink Ms Grade Now 3844 (Polled)
		{	Hi Yield 479 (Polled)
		{	VVCR Tundra Bingo 2584 (Polled)

Tag: 2295 **WWt:** 675
Born: 5/17/24 **WInd:** 103
BW: 85(-4.4) EPD **18 Mo Ind:** 102

Lot 169 VVCR Ledger Stacked 2167 Polled

{ WC Ledger 5657 (Polled)	{ LT Ledger 0332 (Polled)
{ VVCR Stacked Bluegrass 8543 Dam Age 4 (Polled)	{ WC Stacked Value 3566 (Polled)

Tag: 2167 **WWt:** 674
Born: 4/12/22 **WInd:** 103
BW: 84(-2.0) EPD **18 Mo Ind:** 102

Lot 170 VVCR Free Bingo 2291 Polled

{ Free Lunch 041 (Polled)	{ VPI Free Lunch 708 (Polled)
{ VVCR Bingo Blue 7627 Dam Age 5 (Polled)	{ VVCR Bingo Line 2203 (Polled)

Tag: 2291 **WWt:** 672
Born: 5/13/22 **WInd:** 103
BW: 86(-2.4) EPD **18 Mo Ind:** 102

Lot 171 VVCR Gridmaker Bingo 2216 Polled

{ Gridmaker 627 (Polled)	{ M6 Grid Maker 104 (Polled)
{ VVCR Bingo Wyoming 8758 Dam Age 14 (Polled)	{ VVCR Bingo Line 1148 (Polled)

Tag: 2216 **WWt:** 670
Born: 4/19/22 **WInd:** 103
BW: 80(-3.6) EPD **18 Mo Ind:** 102

Lot 172 VVCR Power Ledger 2224 Polled

{ VVCR Power Bingo 6104 (Polled)	{ VVCR Bingo Line 2203 (Polled)
{ VVCR Ledger Value 0576 Dam Age Hfr (Polled)	{ LT Ledger 7404 (Polled)

Tag: 2224 **WWt:** 667 Hfr
Born: 4/20/22 **WInd:** 102
BW: 80(-3.1) EPD **18 Mo Ind:** 102

Lot 173 VVCR Power Bingo 2111 Polled

{ VVCR Power Bingo 6104 (Polled)	{ VVCR Bingo Line 2203 (Polled)
{ VVCR Power Ledger 0515 Dam Age Hfr (Polled)	{ VVCR Power Bingo 6104 (Polled)

Tag: 2111 **WWt:** 665 Hfr
Born: 4/3/22 **WInd:** 102
BW: 78(-4.0) EPD **18 Mo Ind:** 102

Lot 174 VVCR Ledger New 2192 Polled

{ WC Ledger 5657 (Polled)	{ LT Ledger 0332 (Polled)
{ VVCR New Standard Prime 8534 Dam Age 4 (Polled)	{ New Standard 2849 (Polled)

Tag: 2192 **WWt:** 660
Born: 4/16/22 **WInd:** 101
BW: 87(-0.9) EPD **18 Mo Ind:** 101

Lot 175 VVCR Magnum Anchor 2143 Polled

{ WC Magnum 9805 (Polled)	{ WC Milestone 5223 (Polled)
{ VVCR Anchor Ledger 9574 Dam Age 3 (Polled)	{ WC Anchor 6516 (Polled)

Tag: 2143 **WWt:** 657
Born: 4/9/22 **WInd:** 101
BW: 86(-1.1) EPD **18 Mo Ind:** 101

Lot 176 VVCR Distance Line 2183 Polled

{ LT Distance 5200 (Polled)	{ LT Silver Distance 5342 (Polled)
{ VVCR Distance New 8594 Dam Age 4 (Polled)	{ LT Distance 5200 (Polled)

Tag: 2183 **WWt:** 652
Born: 4/15/22 **WInd:** 101
BW: 82(-2.2) EPD **18 Mo Ind:** 101



COWS CLIMB TO TOP FOR GRASS





Heifer Bulls



Lot 177 VVCR Bingo Distance 2173 Polled

Heifer Bull

{	VVCR Bingo Line 8110 (Polled)	VVCR Bingo Line 2182 (Polled)
	VVCR Distance Value 0544 Dam Age Hfr (Polled)	VVCR Bingo Wyoming 6576 (Polled)
		LT Distance 5200 (Polled)
		VVCR Value Tradition 6586 (Polled)

Tag: 2173	WWt: 676 Hfr
Born: 4/14/22	WInd: 104
BW: 75(-4.3) EPD	18 Mo Ind: 105

Lot 178 VVCR Bingo Distance 2275 Polled

Heifer Bull

{	VVCR Bingo Line 8110 (Polled)	VVCR Bingo Line 2182 (Polled)
	VVCR Distance New 0511 Dam Age Hfr (Polled)	VVCR Bingo Wyoming 6576 (Polled)
		LT Distance 5200 (Polled)
		VVCR New Wyoming 6527 (Polled)

Tag: 2275	WWt: 670 Hfr
Born: 5/6/22	WInd: 104
BW: 68(-3.7) EPD	18 Mo Ind: 105

Lot 179 VVCR Bingo New 2267 Polled/S

Heifer Bull

{	VVCR Bingo Line 8110 (Polled)	VVCR Bingo Line 2182 (Polled)
	VVCR New Gridmaker 0639 Dam Age Hfr(Polled)	VVCR Bingo Wyoming 6576 (Polled)
		New Standard 2849 (Polled)
		VVCR Gridmaker Wyoming 9751 (Polled)

Tag: 2267	WWt: 668 Hfr
Born: 5/1/22	WInd: 109
BW: 74(-2.8) EPD	18 Mo Ind: 104

Lot 180 VVCR Bingo Sundance 2105 Polled

Heifer Bull

{	VVCR Bingo Line 8110 (Polled)	VVCR Bingo Line 2182 (Polled)
	VVCR Sundance Primed 0542 Dam Age Hfr (Polled)	VVCR Bingo Wyoming 6576 (Polled)
		LT Sundance 6137 (Polled)
		VVCR Primed Easy 3815 (Polled)

Tag: 2105	WWt: 667 Hfr
Born: 4/2/24	WInd: 103
BW: 67(-3.2) EPD	18 Mo Ind: 104

Lot 181 VVCR Bingo Power 2186 Polled

Heifer Bull

{	VVCR Bingo Line 8110 (Polled)	VVCR Bingo Line 2182 (Polled)
	VVCR Power Distance 0521 Dam Age Hfr(Polled)	VVCR Bingo Wyoming 6576 (Polled)
		VVCR Power Bingo 6104 (Polled)
		VVCR Distance Ledger 8571 (Polled)

Tag: 2186	WWt: 665 Hfr
Born: 4/15/22	WInd: 103
BW: 70(-4.6) EPD	18 Mo Ind: 103

Lot 182 VVCR Bingo New 2154 Polled

Heifer Bull

{	VVCR Bingo Line 8110 (Polled)	VVCR Bingo Line 2182 (Polled)
	VVCR New Bingo 0673 Dam Age Hfr(Polled)	VVCR Bingo Wyoming 6576 (Polled)
		New Standard 2849 (Polled)
		VVCR Bingo Wyoming 0725 (Polled)

Tag: 2154	WWt: 665 Hfr
Born: 4/10/22	WInd: 103
BW: 68(-4.0) EPD	18 Mo Ind: 103

Lot 183 VVCR Bingo Free 2107 Polled

Heifer Bull

{	VVCR Bingo Line 8110 (Polled)	VVCR Bingo Line 2182 (Polled)
	VVCR Free Value 0675 Dam Age Hfr (Polled)	VVCR Bingo Wyoming 6576 (Polled)
		Free Lunch 7849 (Polled)
		VVCR Value Leader 5522 (Polled)

Tag: 2107	WWt: 662 Hfr
Born: 4/2/22	WInd: 103
BW: 75(-3.8) EPD	18 Mo Ind: 102

Lot 184 VVCR Bingo Power 2269 Polled

Heifer Bull

{	VVCR Bingo Line 8110 (Polled)	VVCR Bingo Line 2182 (Polled)
	VVCR Power Value 0530 Dam Age Hfr (Polled)	VVCR Bingo Wyoming 6576 (Polled)
		VVCR Power Bingo 6104 (Polled)
		VVCR Valued Ledger 8616 (Polled)

Tag: 2269	WWt: 658 Hfr
Born: 5/2/22	WInd: 102
BW: 72(-3.5) EPD	18 Mo Ind: 101



TERMS AND CONDITIONS OF SALE

BIDDING: Each animal on which there are two or more bids will be sold to the highest bidder.

TERMS: Terms are cash settlement and must be made after completion of sale unless prior arrangements are made and notarized. Checks are accepted and should be made payable to: **Valley View Charolais Ranch, Inc.** The right of property shall not pass and release of cattle shall not be made until settlement is made and funds have cleared.

DISPUTES: The auctioneer will settle any disputes as to bids by declaring the bids void and reselling the animals in question.

HANDLING: All animals will be maintained prior to their sale at the risk of the cosigner. As their sale is effected, all animals will be maintained at the purchaser's risk. Insurance will be available upon request from agents that are attending the sale, or ask sale clerks. Insurance is always recommended on all purchases.

BREEDERS GUARANTEE: All bulls are fertility-examined and semen-evaluated by a licensed veterinarian. All animals sold are guaranteed breeders by the owner. Any animal that has not proven itself to be a breeder within six months after date of sale, if in healthy condition, may be returned to the seller at buyer's expense. The seller reserves the privilege of trying for a period of six months to prove the animal a breeder. If proven a breeder, the animal will be returned at the buyer's expense. Should the animal fail to prove a breeder, the seller, at his option, may either return the purchase price to the buyer or replace the animal with another of equal quality, in full settlement and satisfaction of all claims. All complaints regarding breeding difficulties must be reported in writing by the buyer to the seller within the time limit specified above, and any animals returned must be free of disease and in good healthy body condition.



ANNOUNCEMENT: Announcements from the auction box will take precedence over printed matter in this catalog or in other ads.

HEALTH: All animals will be cleared for health and have clearance in order for interstate or international shipment.

DELIVERY: Delivery is only guaranteed to central terminals such as stockyards in each area.



CONTRACTS: The above terms and guarantee constitute a contract between the buyer and the seller of each animal sold.

LIABILITIES: All persons who attend the sale do so at their own risk, and the owner and sales representatives assume no liability, legal or otherwise, for any accident which may occur.

ABSENTEE BIDS: Mail, email, or telephone bids may be made directly to Valley View Charolais Ranch, or to a representative field-man, or order-buyer representative of your choice. Bids need to be submitted to the Sale Management in plenty of time prior to the sale and will be handled strictly confidentially. Satisfaction is guaranteed on every bull upon delivery, so absentee buyers can feel completely confident in making a purchase sight-unseen. Each year many bulls are sold sight-unseen to buyers that are unable to attend the sale.

